

Note,
The limits of the area declared a public highway are indicated by the letters A B C D.
The lines conform to deeds in Deed Books 365, page 270 and 387 page 458.

PROVIDENCE, R.I.
CITY ENGINEER'S OFFICE
STREET LINE DEPT.

Aug. 29, 1902

031140

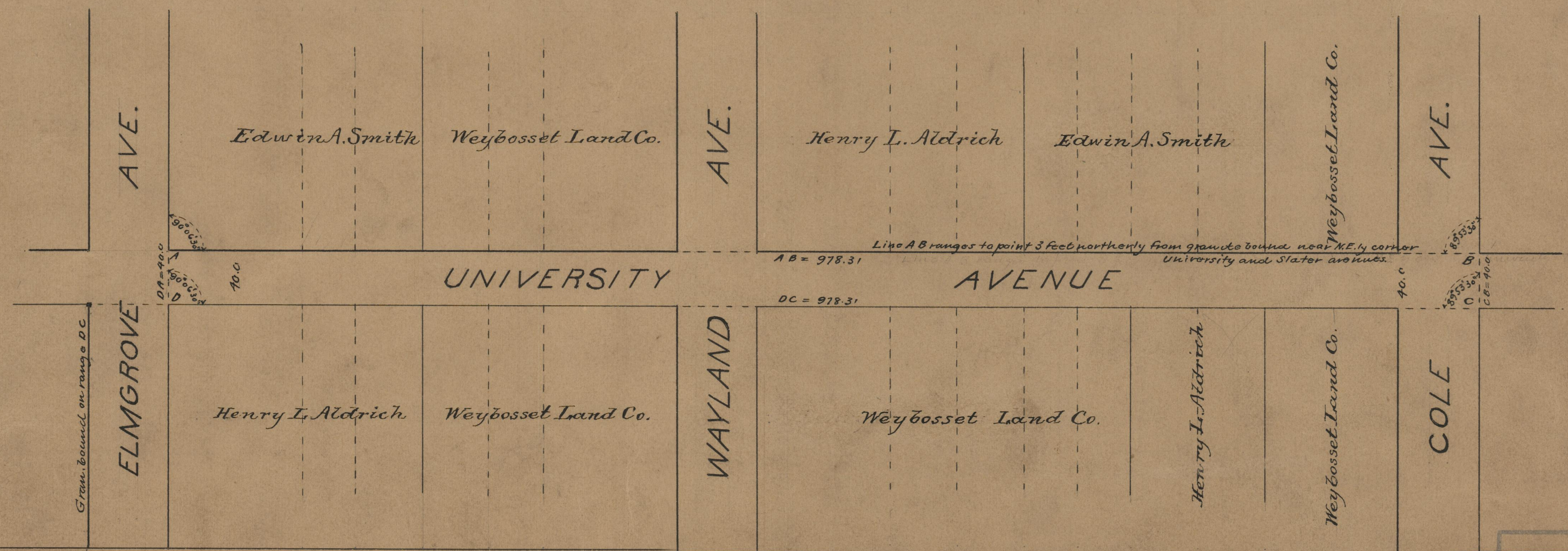
PLAT OF UNIVERSITY AVENUE

FROM ELMGROVE AVE. TO THE EASTERLY LINE OF COLE AVE.

SCALE 80 FEET PER INCH.

DECLARED A PUBLIC HIGHWAY
BY RESOLUTION OF THE
BOARD OF ALDERMEN,
August 7, 1902.

Witness -----
City Clerk



OFFICE No. 14955
DRAWER 75
SHEET B-13