

PROVIDENCE, R.I.  
CITY ENGINEER'S OFFICE  
STREET LINE DEPT.

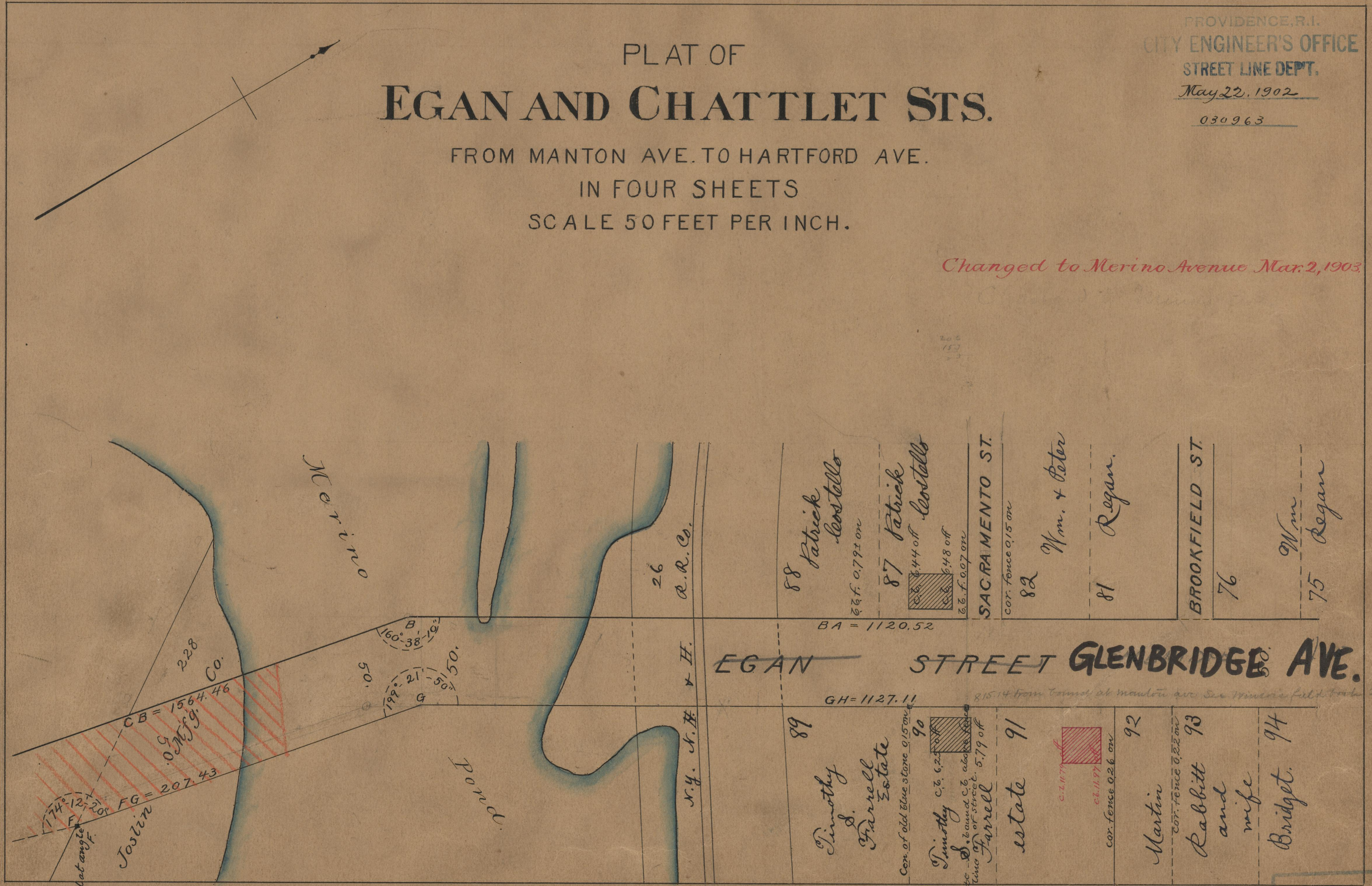
May 22, 1902

030963

# PLAT OF EGAN AND CHATTLET STS.

FROM MANTON AVE. TO HARTFORD AVE.  
IN FOUR SHEETS  
SCALE 50 FEET PER INCH.

*Changed to Merino Avenue Mar. 2, 1903*



OFFICE No. 14942  
 DRAWER 75  
 SHEET B-9