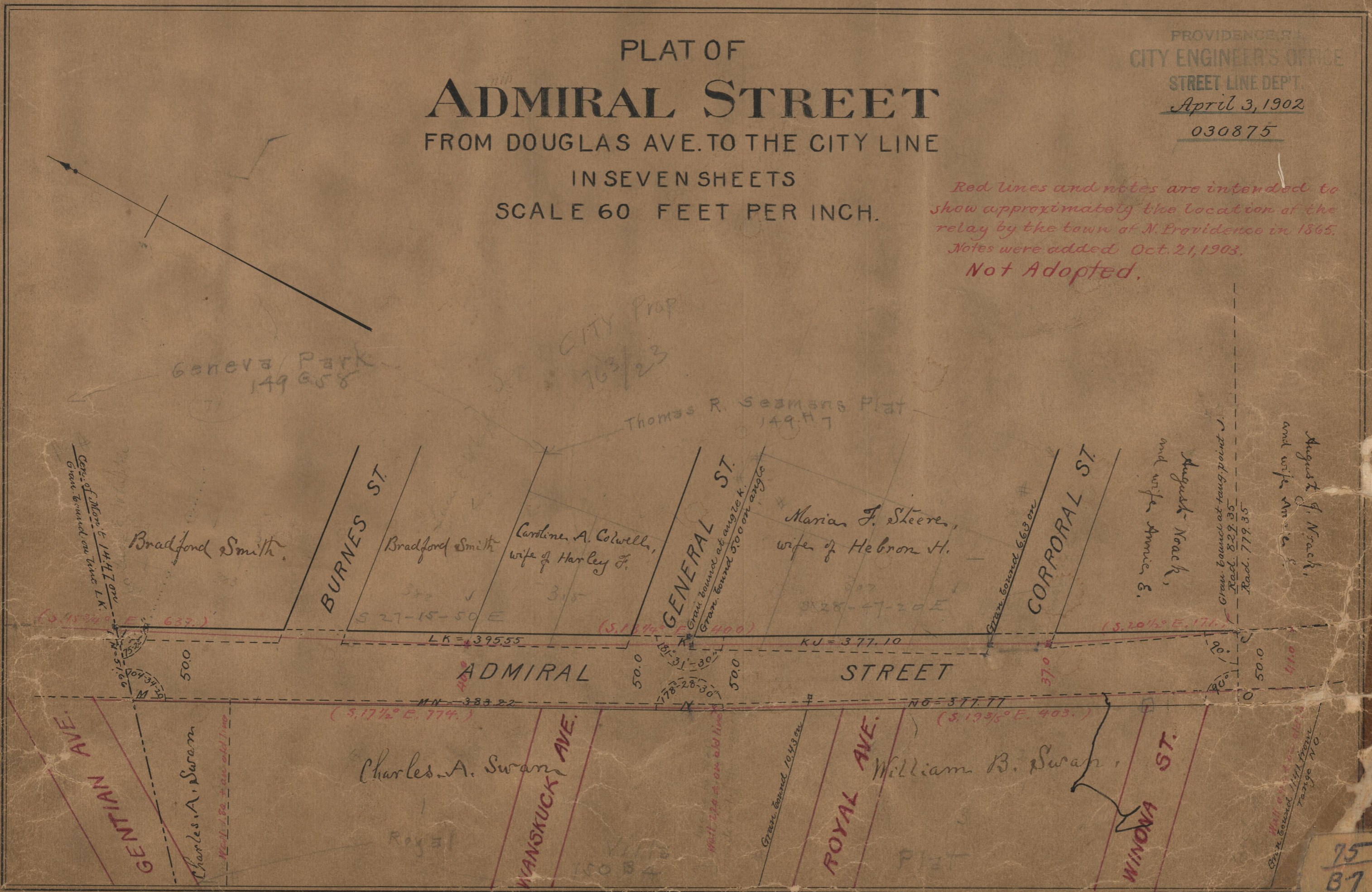


PLAT OF  
**ADMIRAL STREET**  
FROM DOUGLAS AVE. TO THE CITY LINE  
IN SEVEN SHEETS  
SCALE 60 FEET PER INCH.

PROVIDENCE, R.I.  
CITY ENGINEER'S OFFICE  
STREET LINE DEPT.  
*April 3, 1902*  
030875

*Red lines and notes are intended to show approximately the location of the relay by the town of N. Providence in 1865. Notes were added Oct. 21, 1903. Not Adopted.*



Geneva Park  
149 658

CITY PROP  
763/23

Thomas R. Seaman's Plat  
149 H 7

Bradford Smith

Bradford Smith

Caroline A. Colwell,  
wife of Harley F.

Marian J. Steere,  
wife of Hebron H.

August K. Noack,  
and wife Annie E.

August K. Noack,  
and wife Annie E.

Cont. of Mon't 144707  
Grav. toward on line LK.

Grav. bound at tang. point J.  
Rad. 829.35  
Rad. 779.35

St. K. bound 1141 from  
Tango 170

75  
87

75 B. 7