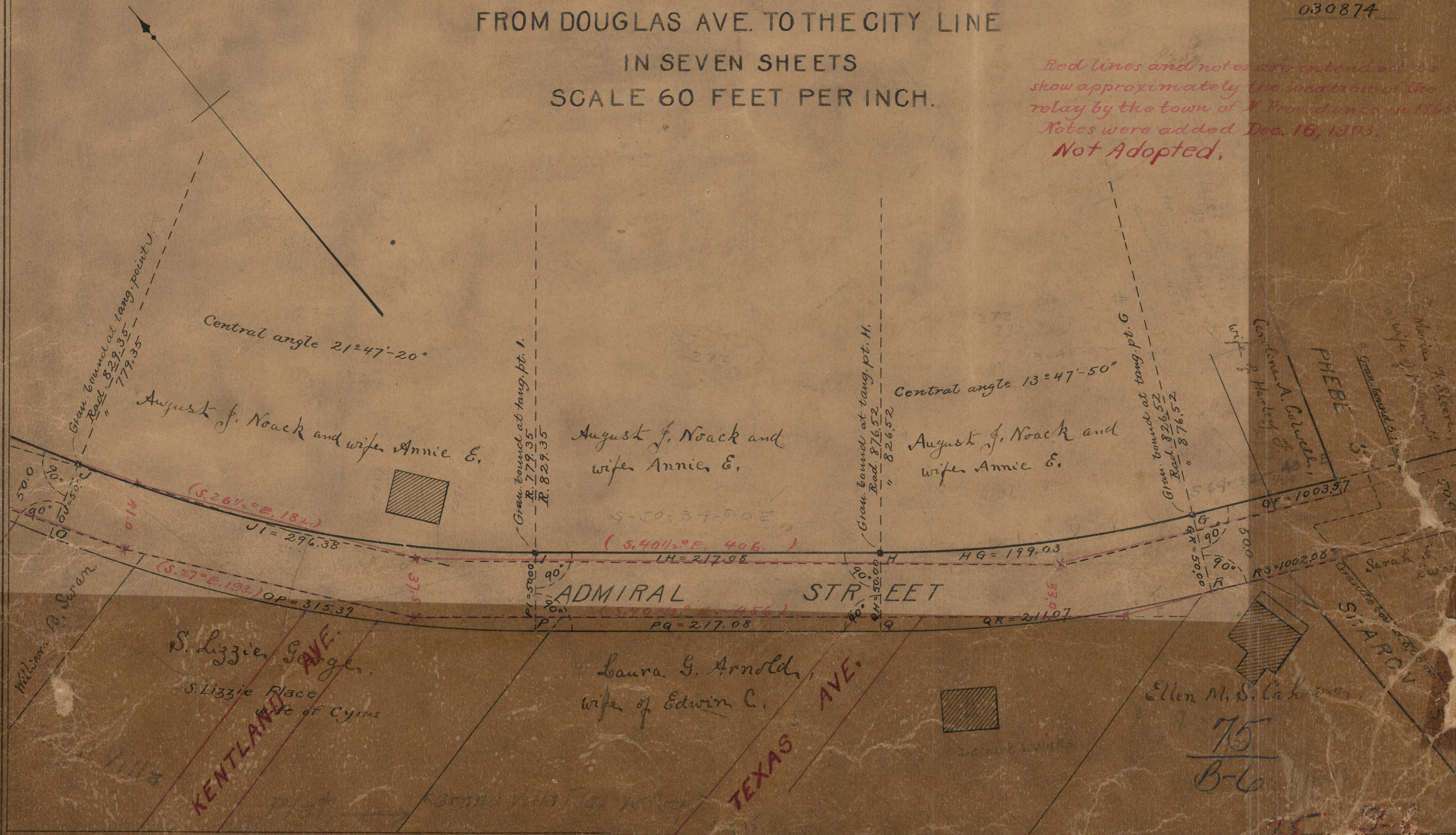


# PLAT OF ADMIRAL STREET FROM DOUGLAS AVE. TO THE CITY LINE

IN SEVEN SHEETS  
SCALE 60 FEET PER INCH.

PROVIDENCE  
CITY ENGINEER'S OFFICE  
STREET LINE DEPT  
April 3, 1902  
030874

*Red lines and notes are intended to show approximately the location of the relay by the town of Providence in 1866. Notes were added Dec. 16, 1903. Not Adopted.*



**KENTLAND AVE.**

**TEXAS AVE.**

**PHEBE ST.**

**ADMIRAL STREET**

S. Lizzie George  
S. Lizzie Place  
wife of Cyrus

Laura G. Arnold  
wife of Edwin C.

Ellen M. S. Cahoon

August J. Noack and wife Annie E.

August J. Noack and wife Annie E.

August J. Noack and wife Annie E.

Confederate A. Corbelle  
wife of Harriet G.

75  
B-6

75-9-1