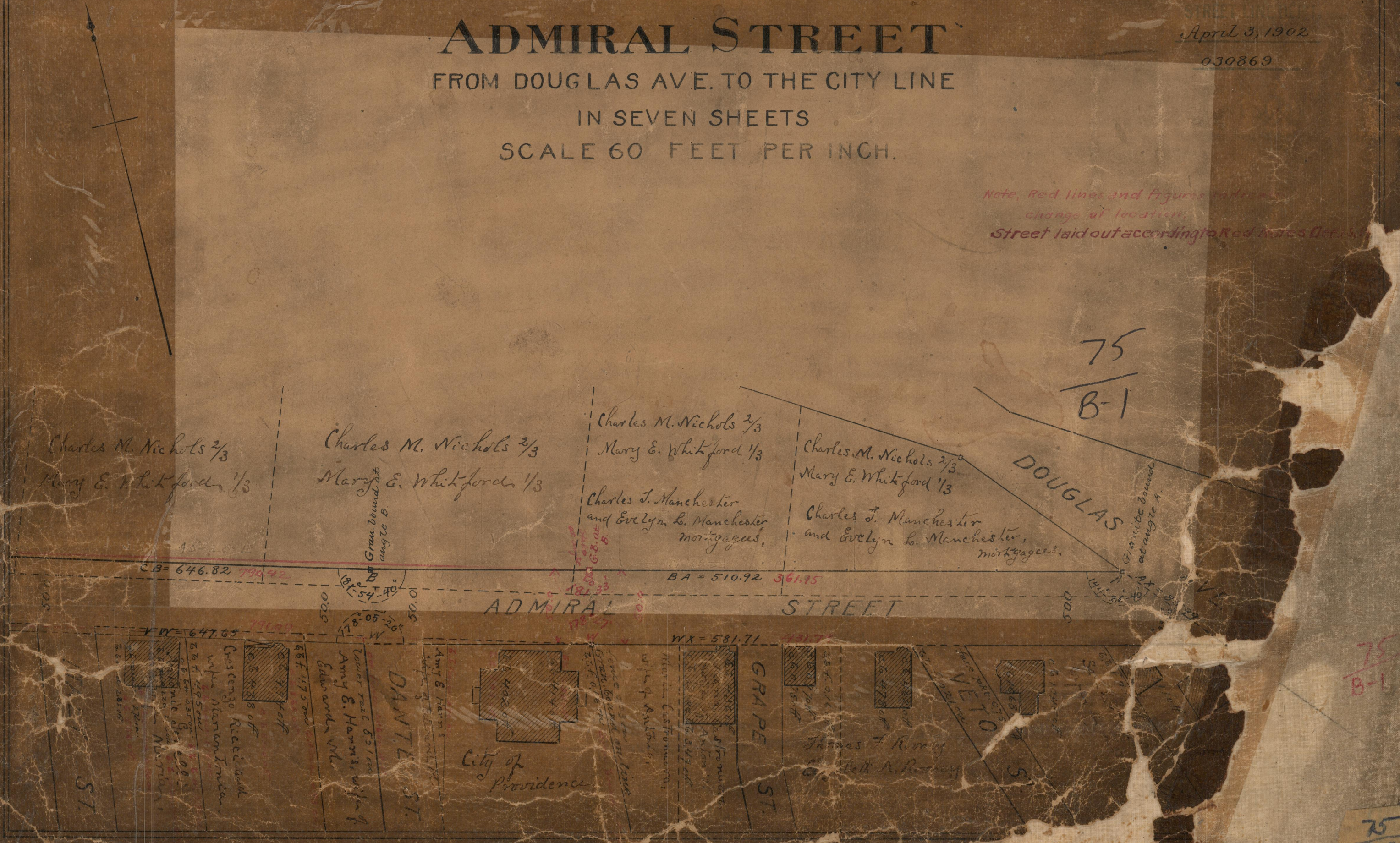


PLAT OF
ADMIRAL STREET
 FROM DOUGLAS AVE. TO THE CITY LINE
 IN SEVEN SHEETS
 SCALE 60 FEET PER INCH.

April 3, 1902

030869

Note, Red lines and figures indicate
 change of location.
 Street laid out according to Red lines details.



75
B-1

75
B-1

75
B-1

Charles M. Nichols $\frac{2}{3}$
Mary E. Whitford $\frac{1}{3}$

Charles M. Nichols $\frac{2}{3}$
Mary E. Whitford $\frac{1}{3}$

Charles M. Nichols $\frac{2}{3}$
Mary E. Whitford $\frac{1}{3}$

Charles M. Nichols $\frac{2}{3}$
Mary E. Whitford $\frac{1}{3}$

Charles J. Manchester
and Evelyn L. Manchester
mortgagees.

Charles J. Manchester
and Evelyn L. Manchester,
mortgagees.

ADMIRAL STREET

DOUGLAS

DANTE ST.

GRAPE ST.

VETO ST.

City of Providence

Lower part 55' from
 Amy E. Harris, wife of
 Edward W. Harris

Casengo Reed and
 wife Marion Innes

264 195' on
 E. E. 64' 35" on
 N. 11' 10" on
 W. 28' 10" on

287 117' 5" on
 Amy E. Harris
 wife of Edward W. Harris

WX = 581.71
 1317'

James F. Remy
 G. M. Remy

CB = 646.82 790.42

BA = 510.92 361.95

VW = 647.65 141.09

WX = 581.71 1317'

181° 54' 40"

178° 05' 26"

Granitic bound
at angle A.

Gran bound at
angle B.