

Apr. 26, 1902.

030921

Note,

The limits of the area declared a public highway are indicated by the letters A B C D.

The lines fixed conform to the deed in Deed Book 365, at page 270, in the office of the Recorder of Deeds.

PLAT OF EVERETT AVENUE

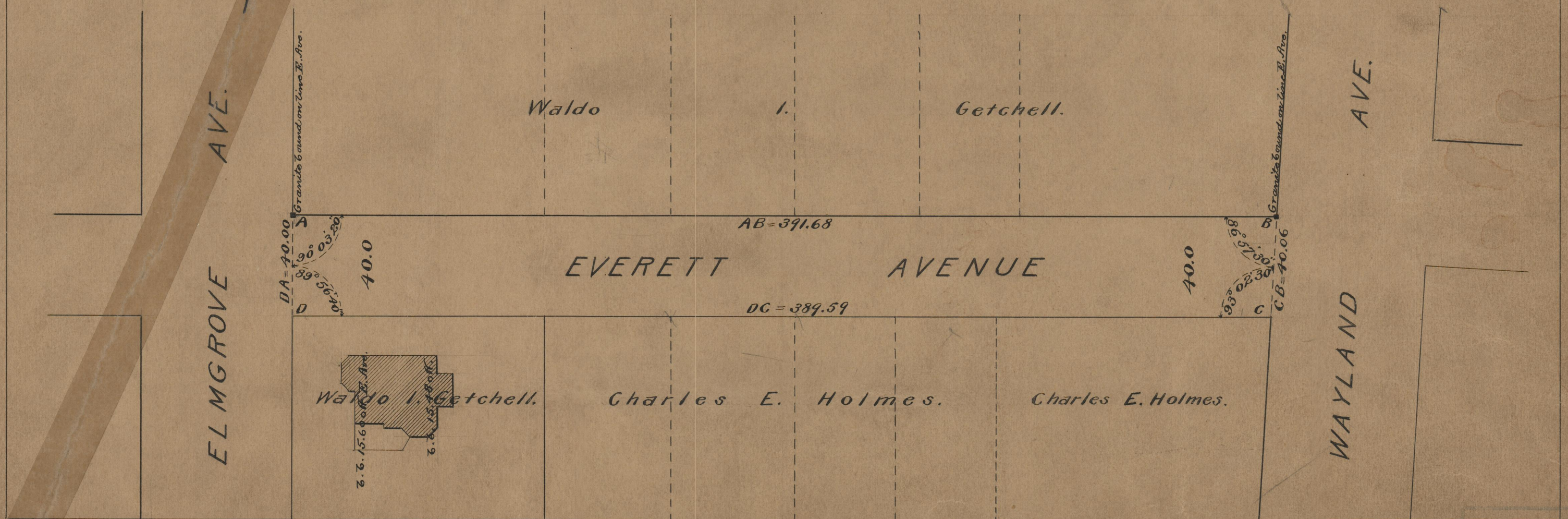
FROM ELMGROVE AVE. TO WAYLAND AVE.

SCALE 40 FEET PER INCH.

DECLARED A PUBLIC HIGHWAY
BY RESOLUTION OF THE
BOARD OF ALDERMEN

April 3, 1902.

391.68
389.59
21781.27
390.64



OFFICE No 14920

DEPT 75

ISSUE A-100