

Note,
The limits of the area declared a public highway are indicated by the letters ABCD.
The lines fixed conform to the deed in deed book 365, at page 270 in the office of the recorder of deeds.

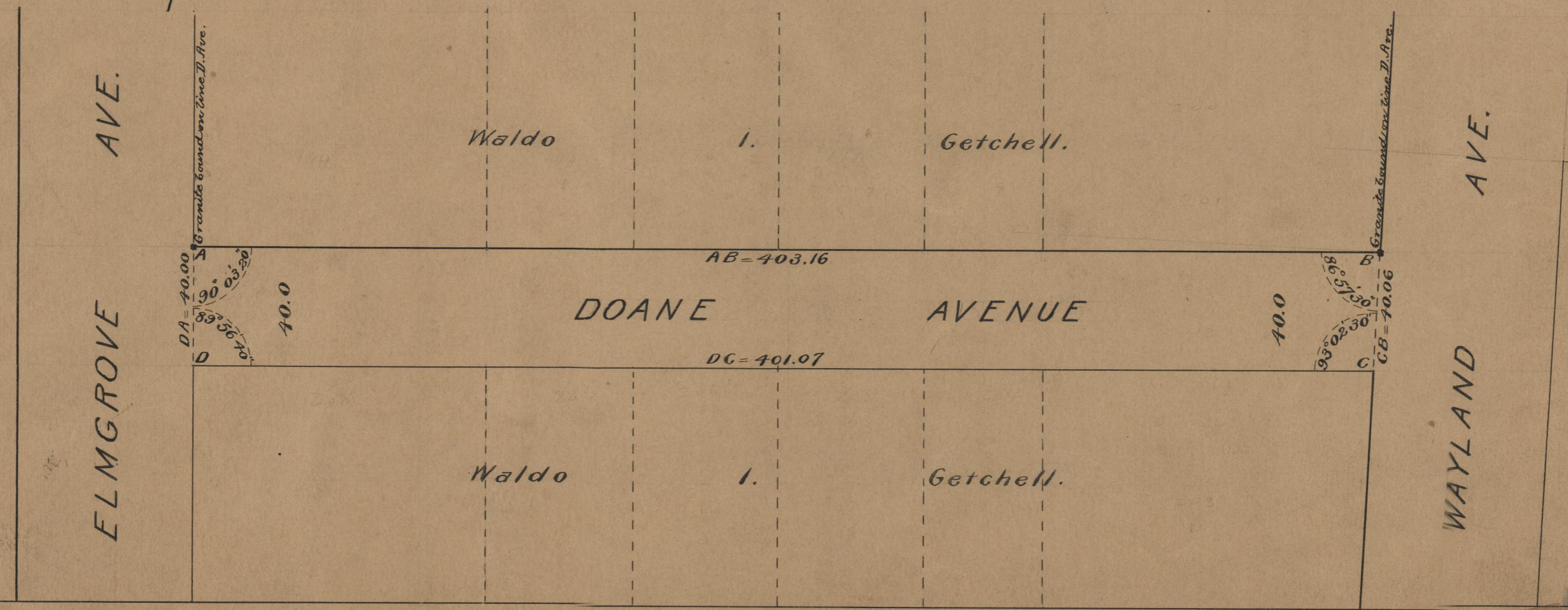
PLAT OF DOANE AVENUE

FROM ELMGROVE AVE. TO WAYLAND AVE.
SCALE 40 FEET PER INCH.

DECLARED A PUBLIC HIGHWAY
BY RESOLUTION OF THE
BOARD OF ALDERMEN

April 3, 1902.

403.16
401.07
2)804.23
402.11



OFFICE No.	14919
DRAWER	75
SHEET	A-29