

PROVIDENCE, R.I.  
CITY ENGINEER'S OFFICE

STREET LINE DEPT.

Apr. 26, 1902.

030917

Note,

The limits of the area declared a public highway are indicated by the letters ABCD.

The lines fixed conform to the deed in Deed Book 440 at page 397 in the office of the Recorder of Deeds.

# PLAT OF MOSES BROWN STREET

FROM ANGELL ST. TO S. ANGELL ST

SCALE 50 FEET PER INCH.

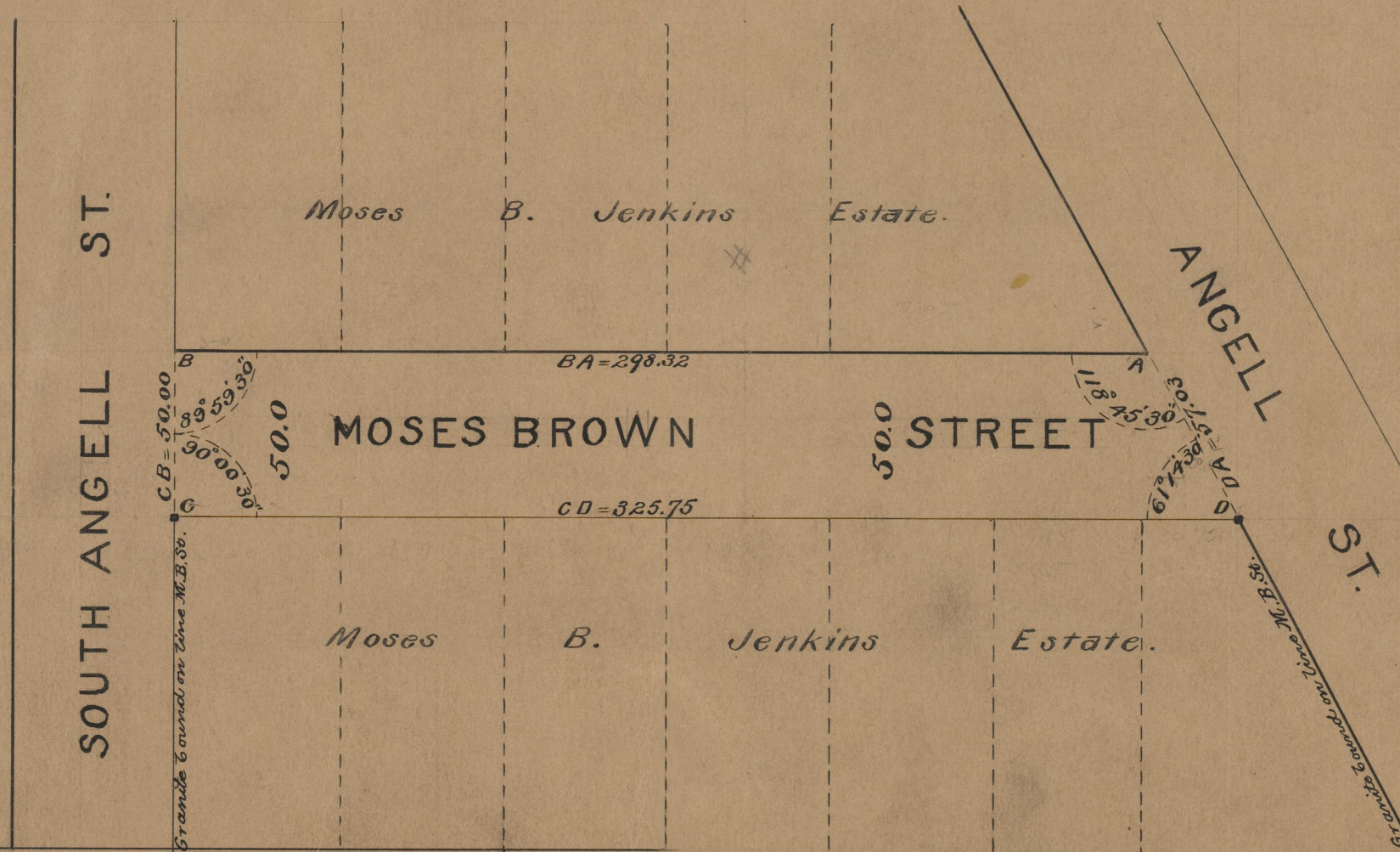
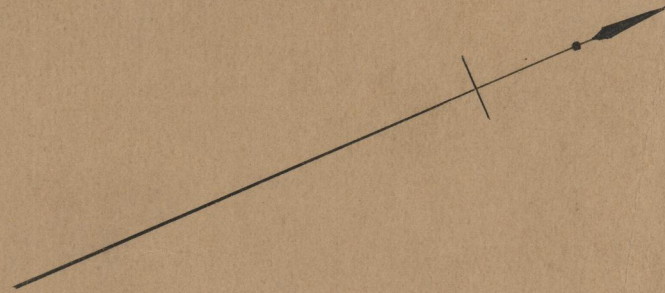
DECLARED A PUBLIC HIGHWAY

BY RESOLUTION OF THE

BOARD OF ALDERMEN

April 3, 1902.

298.32  
325.75  
2624.07  
312.04



OFFICE No. 14918  
DRAWER 75  
SHEET A-98