

PROVIDENCE, R.I.
CITY ENGINEER'S OFFICE

STREET LINE DEPT.

Mar. 4, 1902.

030825

Note, The limits of the area declared a public highway are indicated by the letters ABCD.
The lines fixed conform to the deed recorded in deed book 387, page 369 in the office of the recorder of deeds.

PLAT OF BELLEVUE AVENUE

FROM ELMWOOD AVE. TO BUCKLIN ST.

SCALE 60 FEET PER INCH.

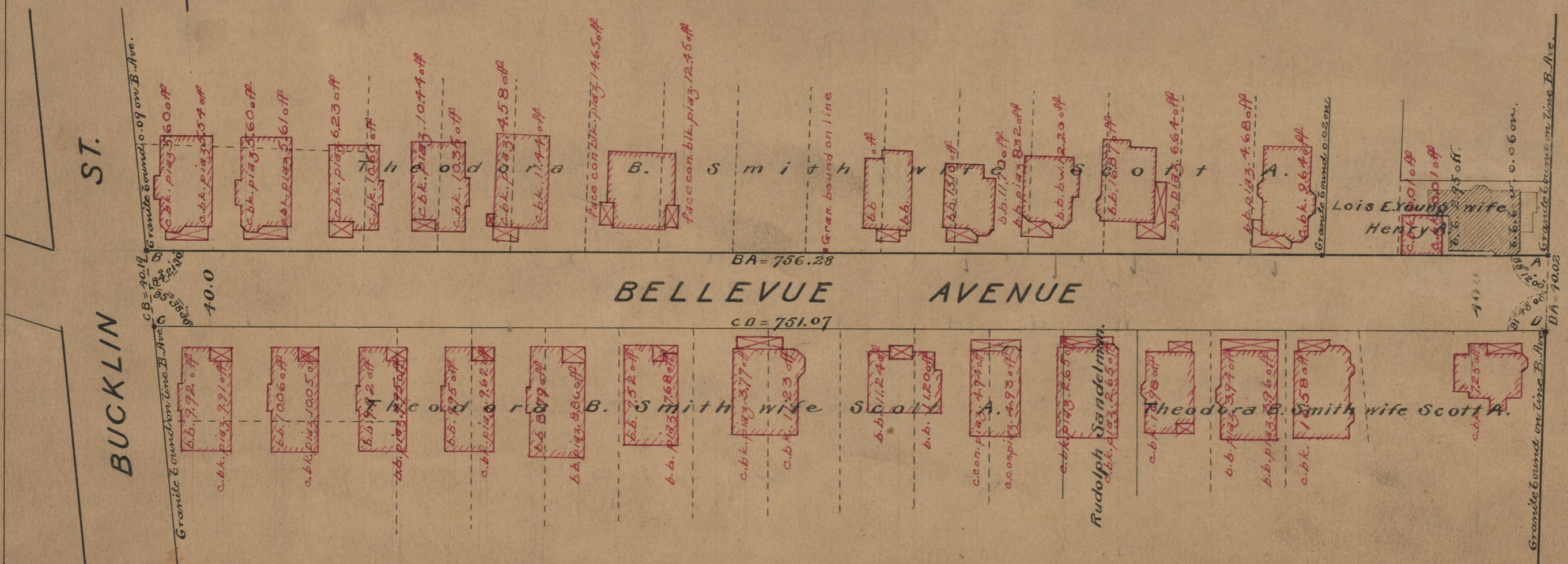
DECLARED A PUBLIC HIGHWAY
BY RESOLUTION OF THE
BOARD OF ALDERMEN

February 20, 1902.

756.28
751.07
21507.35
753.675

Witness

City Clerk.



BUCKLIN ST.
ELMWOOD AVE.

OFFICE No. 14894
DRAWER 75
A-97