

PROVIDENCE, R.I.  
CITY ENGINEER'S OFFICE  
STREET LINE DEPT.

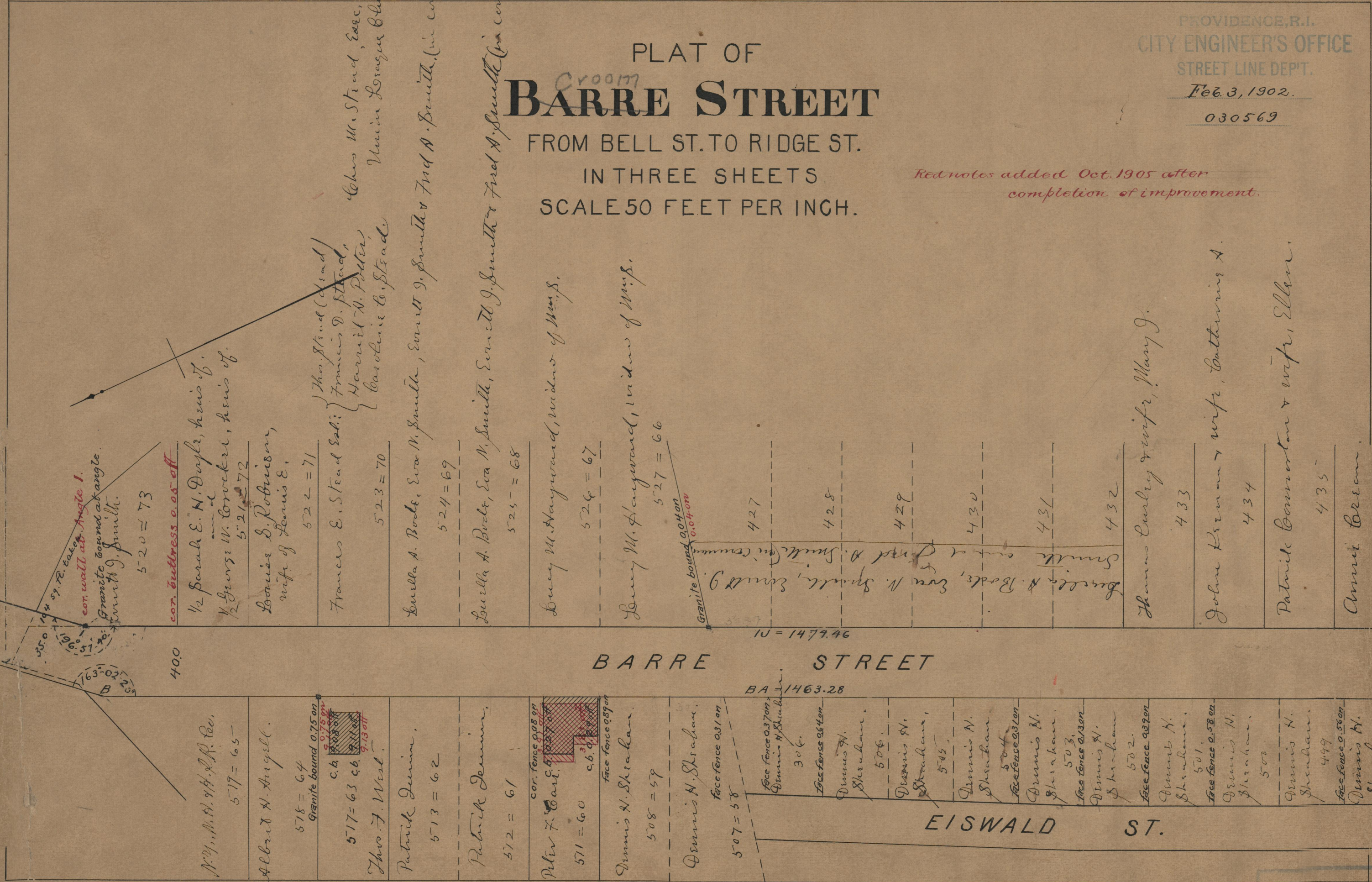
Feb. 3, 1902.

030569

PLAT OF  
<sup>Croom</sup>  
**BARRE STREET**

FROM BELL ST. TO RIDGE ST.  
IN THREE SHEETS  
SCALE 50 FEET PER INCH.

Red notes added Oct. 1905 after  
completion of improvement.



con. wall at Angle 1.  
Granite bound at angle.  
Croom & G. Smith.

520 = 73

con. buttress 0.05 off

1/2 Sarah E. N. Doyle, heirs of.

1/2 George W. Corcker, heirs of.

Louise S. Robinson,  
wife of Lewis E.

522 = 71

Frances E. Stead Esq.

Thomas Stead (dead)  
Francis D. Stead,  
Harriet W. Polter,  
Caroline C. Stead

523 = 70

Luella A. Bode, Eva M. Smith, Everett J. Smith & Fred A. Smith (in common)

524 = 69

Luella A. Bode, Eva M. Smith, Everett J. Smith & Fred A. Smith (in common)

525 = 68

Louey M. Hayward, widow of Mrs. S.

526 = 67

Louey M. Hayward, widow of Mrs. S.

527 = 66

granite bound 0.04 on  
0.04 on

Luella A. Bode, Eva M. Smith, Everett J. Smith & Fred A. Smith (in common)

427

428

429

430

431

432

Thomas Curley & wife, Mary J.

433

John Brown & wife, Catherine A.

434

Patrick Conant & wife, Ellen.

435

Annie Beem.

436

Patrick McGowan & wife, Alice A.

437

N. H. A. R. Lee,  
517 = 65

Albert H. Angell.

518 = 64

granite bound 0.75 on  
0.15 on

517 = 63

Thos. F. West.

Patrick Demin.

513 = 62

Patrick Demin.

512 = 61

con. fence 0.08 on

Peter F. Carl.

511 = 60

face fence 0.89 on

Dennis H. Sheahan.

508 = 59

Dennis H. Sheahan.

507 = 58

face fence 0.31 on

face fence 0.37 on  
Dennis H. Sheahan.

306.

face fence 0.64 on

Dennis H. Sheahan.

506.

Dennis H. Sheahan.

505.

Dennis H. Sheahan.

face fence 0.10 on

Dennis H. Sheahan.

503.

face fence 0.13 on

Dennis H. Sheahan.

502.

face fence 0.39 on

Dennis H. Sheahan.

501.

face fence 0.58 on

Dennis H. Sheahan.

500.

face fence 0.56 on

Dennis H. Sheahan.

499

face fence 0.58 on

Dennis H. Sheahan.

498.

face fence 0.58 on

Dennis H. Sheahan.

497

OFFICE No. 14567  
DRAWN 75  
A-95