

PROVIDENCE, R.I.
CITY ENGINEER'S OFFICE
STREET LINE DEPT.

Feb. 3, 1902

030568

PLAT OF
Croom
BARRE STREET

FROM BELL ST. TO RIDGE ST.

IN THREE SHEETS

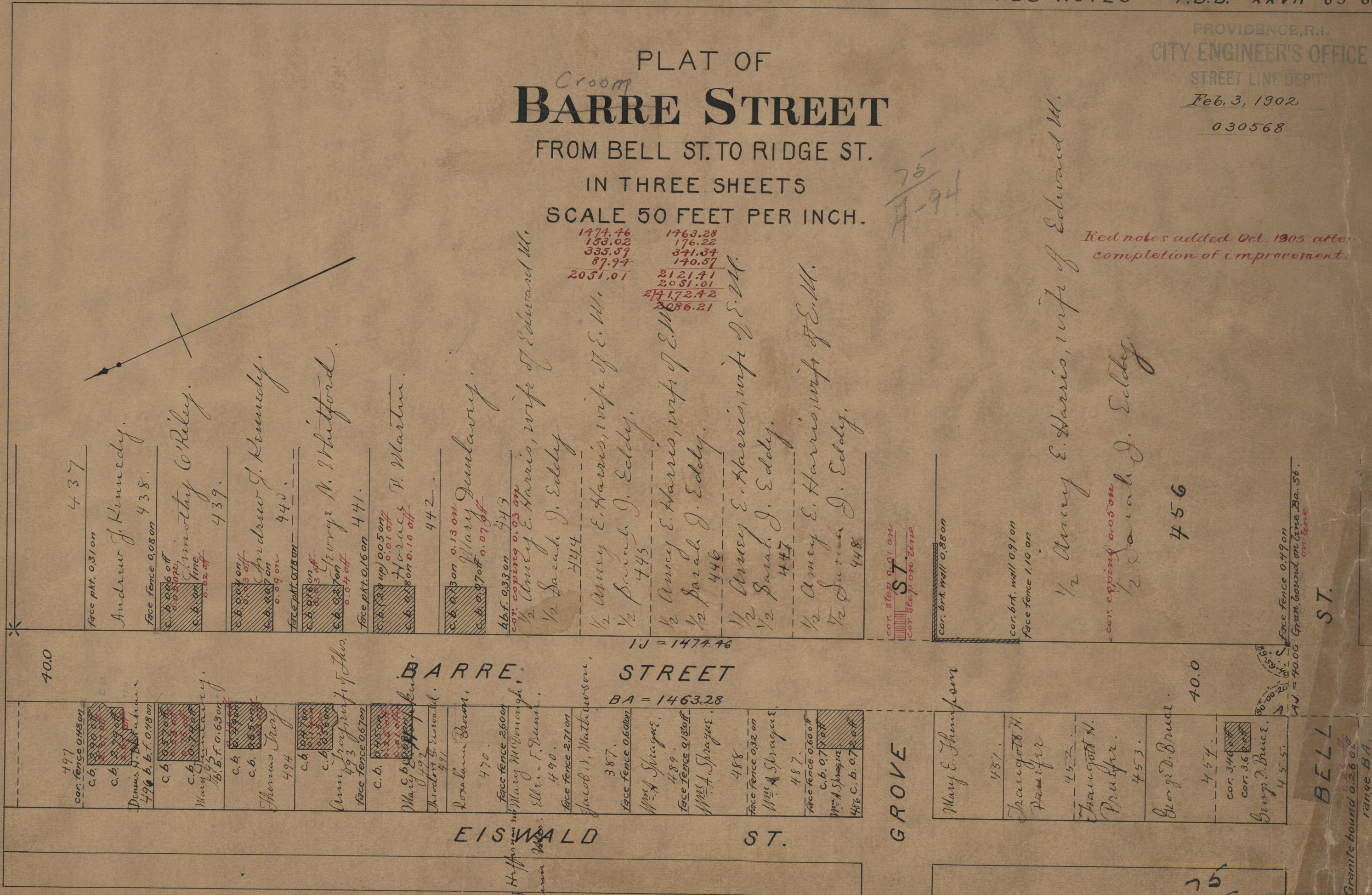
SCALE 50 FEET PER INCH.

*75
A-94*

*Red notes added Oct. 1905 after
completion of improvement.*

*1474.46
153.02
335.59
87.94
2051.01*

*1463.28
176.22
341.34
140.57
2121.41
2051.01
2172.42
2086.21*



40.0

11 = 1474.46
BARRE STREET
BA = 1463.28

EISWALD ST.

GROVE ST.

BELL ST.

40.0

*75
A-94*

BELL ST.

Granite bound 0.26 off
range BA.

*Face fence 0.49 on
Gran. bound on line Ba. 56.
on fence*

437

Andrew J. Kennedy.

438.

Timothy O'Reiley.

439.

Andrew J. Kennedy.

440.

George N. Whitford.

441.

Horace F. Martin.

442.

Mary Dunlavy.

443.

1/2 Amey E. Harris, wife of Edward M.

444.

1/2 Sarah J. Eddy.

445.

1/2 Amey E. Harris, wife of E.M.

446.

1/2 Sarah J. Eddy.

447.

1/2 Amey E. Harris, wife of E.M.

448.

1/2 Sarah J. Eddy.

449.

1/2 Amey E. Harris, wife of E.M.

450.

cor. step 0.01 on

cor. step on fence

cor. brk. wall 0.88 on

Mary E. Thompson

451.

Trangott N. Pruffer

452.

Trangott N. Pruffer.

453.

George D. Bruce.

454.

George D. Bruce.

455.

1/2 Amey E. Harris, wife of Edward M.

1/2 Sarah J. Eddy.

456

OFFICE NO. 14566