

PROVIDENCE, R.I.
CITY ENGINEER'S OFFICE
STREET LINE DEPT.
Jan. 15, 1902.
030540

Note. The limits of the area declared a public highway are indicated by the letters A B C D.
The lines agree with the "Map of the Ben Allen and Burgess Lands" to which reference is made by the deeds in Deed Books 440, page 502, 443, pages 77 and 348 and 444, page 201 in the office of the recorder of deeds.

PLAT OF OXFORD STREET

FROM EDDY ST. TO ALLENS AVE.

IN TWO SHEETS

SCALE 50 FEET PER INCH.

DECLARED A PUBLIC HIGHWAY

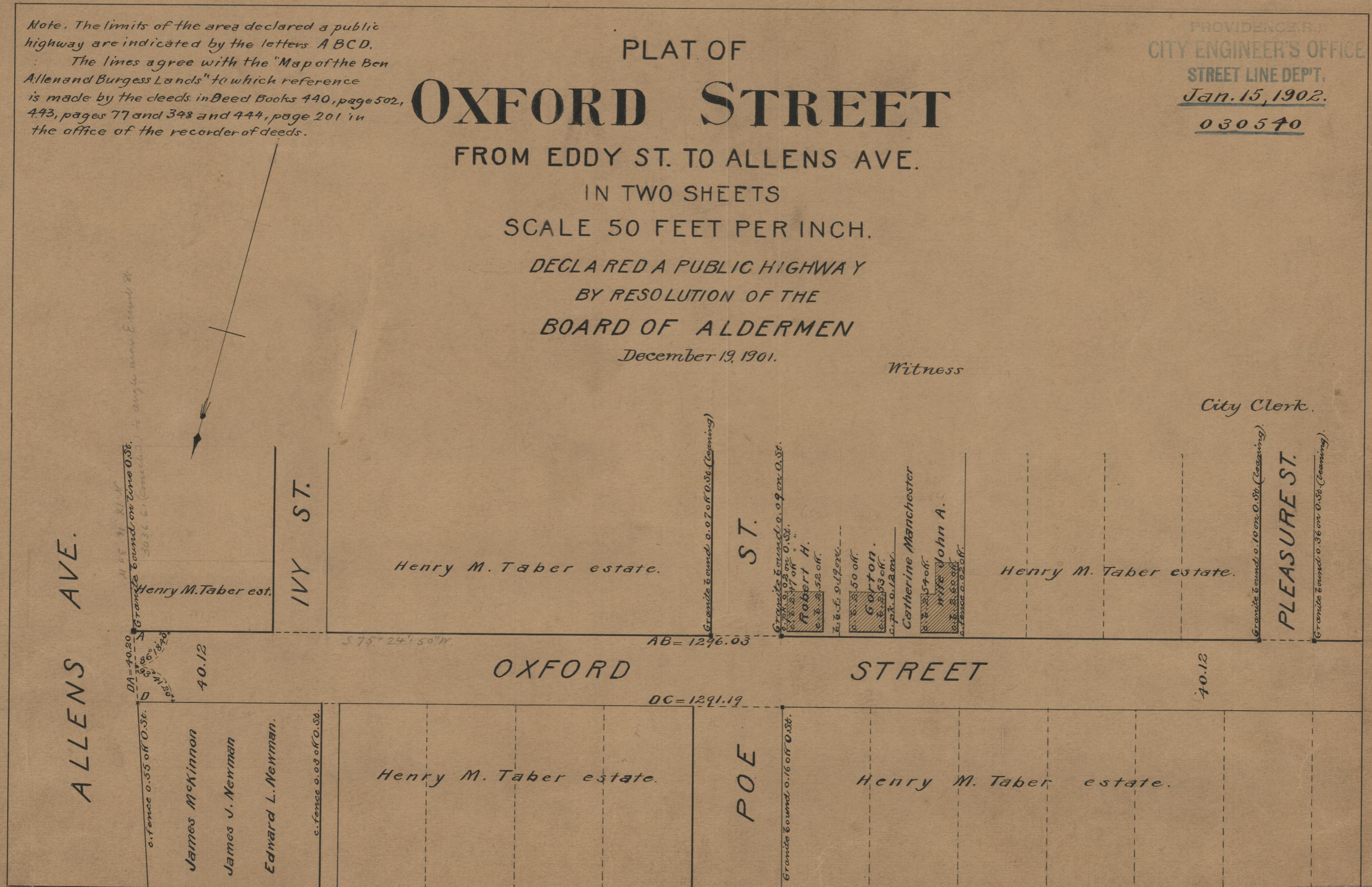
BY RESOLUTION OF THE

BOARD OF ALDERMEN

December 19, 1901.

Witness

City Clerk.



75
A-93

OFFICE No. 14549
DRAWER 75