

PLAT OF REGENT AVENUE

FROM HAROLD ST. TO RIVER AVE.

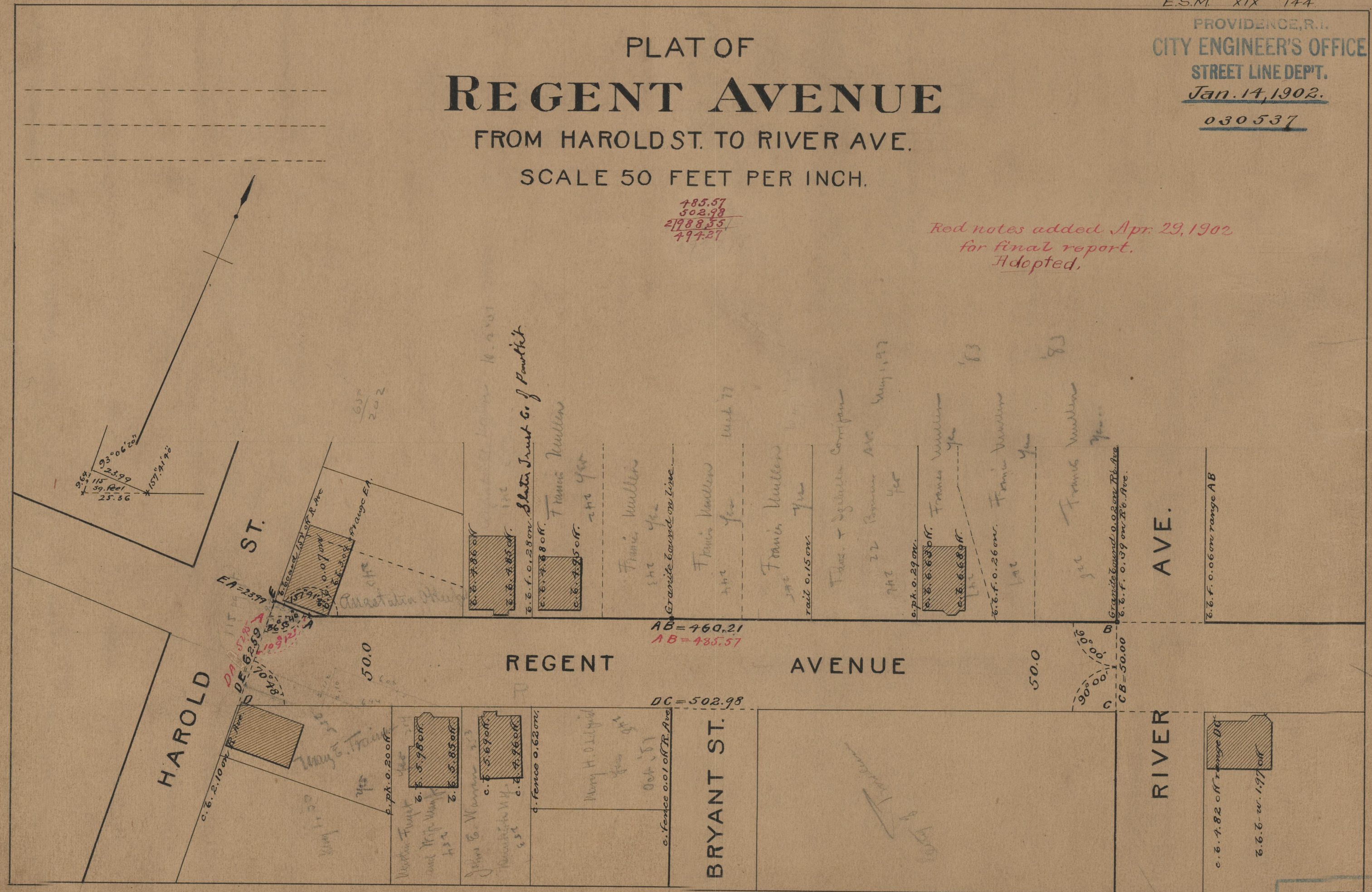
SCALE 50 FEET PER INCH.

PROVIDENCE, R.I.
CITY ENGINEER'S OFFICE
STREET LINE DEPT.
Jan. 14, 1902.

030537

785.57
502.98
21988.55
494.27

Red notes added Apr 29, 1902
for final report.
Adopted.



93°06'20"
23.99
59.12
25.86
157°31'20"

HAROLD ST.

ST.

REGENT AVENUE

AVENUE

BRYANT ST.

RIVER AVE.

AVE.

EA=23.97

DA=52.28
DE=62.59
DB=70.87

50.0

AB=460.21
AB=485.57

DC=502.98

50.0

CB=50.00

c. b. 4.82 off range DC
c. b. 6. w. 1.97 off

c. b. f. 0.06 on range AB

Shute Trust Co. of Portland
Francis Muller
c. b. f. 0.28 on
c. b. 7.86 off
c. b. 7.88 off
c. b. 7.95 off

Francis Muller
c. b. 7.88 off
c. b. 7.95 off

Francis Muller
c. b. 7.88 off
c. b. 7.95 off

Francis Muller
c. b. 7.88 off
c. b. 7.95 off

Francis Muller
c. b. 7.88 off
c. b. 7.95 off

Francis Muller
c. b. 7.88 off
c. b. 7.95 off

Francis Muller
c. b. 7.88 off
c. b. 7.95 off