

Samuel S. Dwyer

E.S.M. XIX 141

PROVIDENCE, R.I.  
CITY ENGINEER'S OFFICE  
STREET LINE DEPT.  
Dec. 3, 1901.

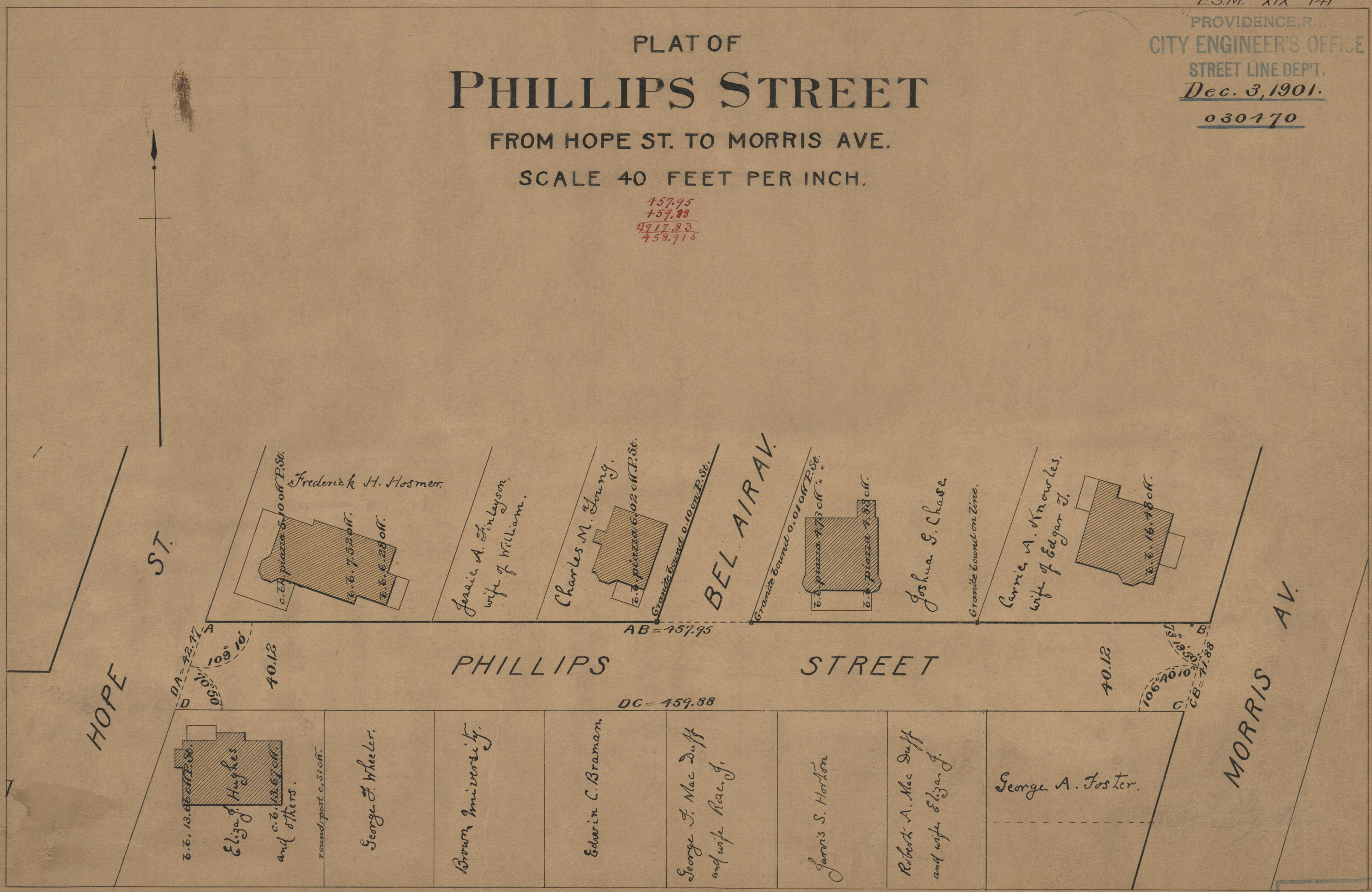
030470

# PLAT OF PHILLIPS STREET

FROM HOPE ST. TO MORRIS AVE.

SCALE 40 FEET PER INCH.

457.95  
459.88  
4917.83  
458.918



HOPE ST.

ST.

DA = 42.77  
109° 10'  
106° 40' 10"

40.12

PHILLIPS STREET

AB = 457.95

DC = 459.88

40.12

106° 40' 10"  
109° 10'  
CB = 471.88

MORRIS AV.

6.6, 13.6 off P.St.  
Eliza Hughes  
and others.  
round post c. 51 off.

George F. Wheeler.

Brown University.

Edwin C. Braman

George J. Mac Duff  
and wife Rose J.

Jarris S. Horton

Robert A. Mac Duff  
and wife Eliza J.

George A. Foster.

Frederick H. Hosmer.  
c. 74 piazza 5' 10 off P.St.  
6.6, 7.53 off.  
6.6, 6.28 off.

Jessie A. Lincolson,  
wife of William.

Charles M. Young.  
6.4 piazza 6.02 off P.St.  
Granite bound 0.10 on P.St.

BEL AIR AV.

Granite bound 0.01 on P.St.  
6.6 piazza 4.73 off.  
6.6 piazza 4.73 off.

Joshua S. Chase  
Granite bound on line.

Carric A. Knowles,  
wife of Edgar J.  
6.6, 16.78 off.

OFFICE No. 14531  
DRAWER 75  
SHEET A-88

75  
A-88