

PROVIDENCE, R.I.
CITY ENGINEER'S OFFICE
STREET LINE DEPT.
Nov. 26, 1901.
030461

Note. The limits of the area declared a public highway are indicated by the letters ABCD.
The lines conform to deeds in deed books 407, page 227; 437, page 473; 439, page 52; and 443, page 69 in the office of the recorder of deeds.

PLAT OF SUFFOLK STREET

FROM ADMIRAL ST. TO SALINA ST.

SCALE 40 FEET PER INCH

DECLARED A PUBLIC HIGHWAY

BY RESOLUTION OF

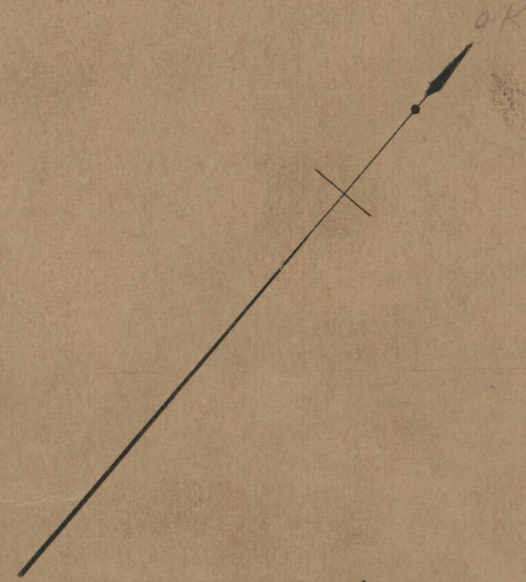
BOARD OF ALDERMEN.

November 7, 1901.

305.57
302.67
21608.24
304.12

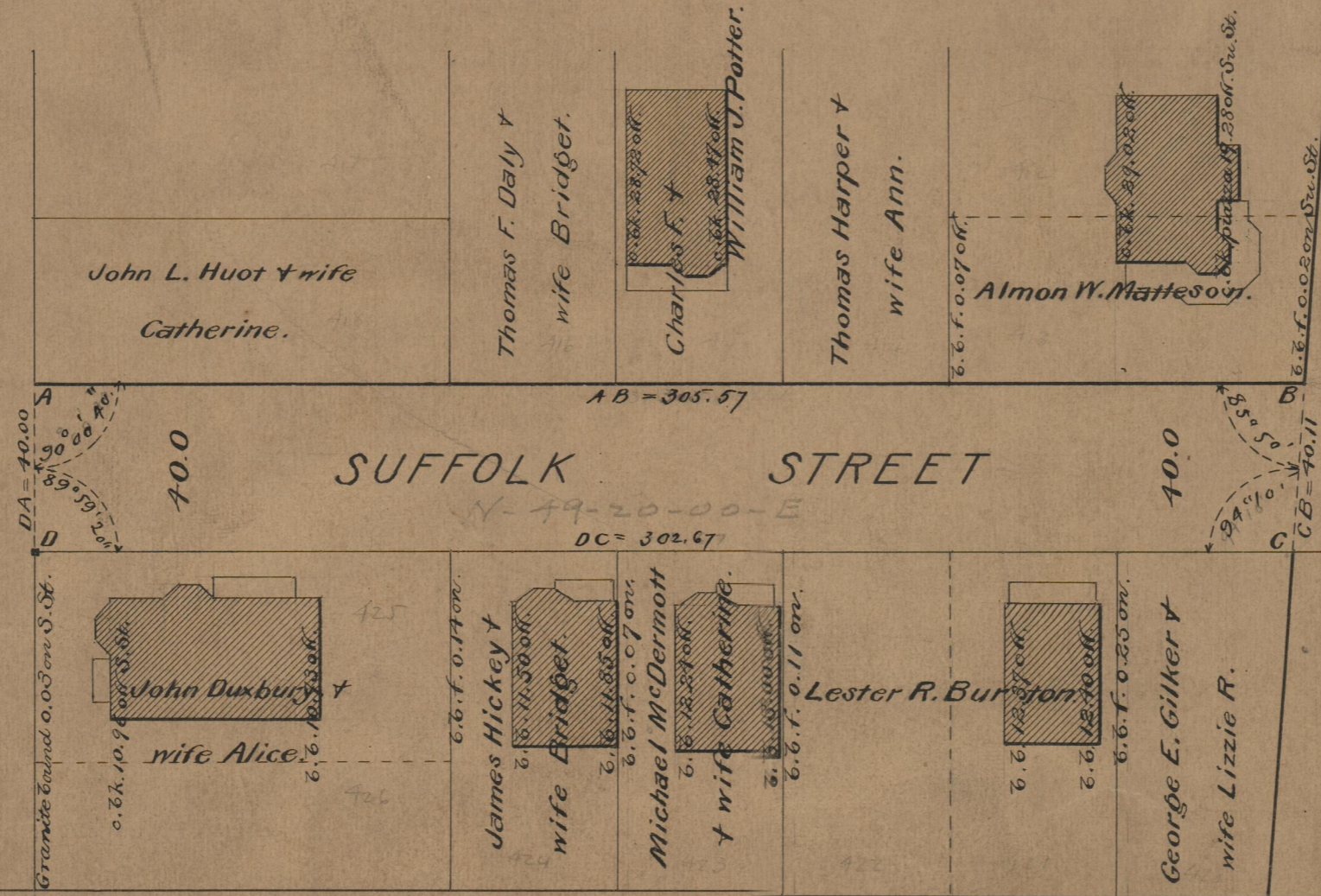
Witness,

City Clerk.



ST.

ADMIRAL



ST.

SALINA

Granite Bound.

75
487

OFFICE No. 145.
DRAWN