

PROVIDENCE, R.I.
CITY ENGINEER'S OFFICE
STREET LINE DEPT.
Oct. 26, 1901.
030410

Note, The limits of the area declared a public highway are indicated by the letters ABCD
The lines conform to deeds in Deed Book 365, pages 79 and 270 and Deed Book 437, page 39, in the office of the Recorder of Deeds.

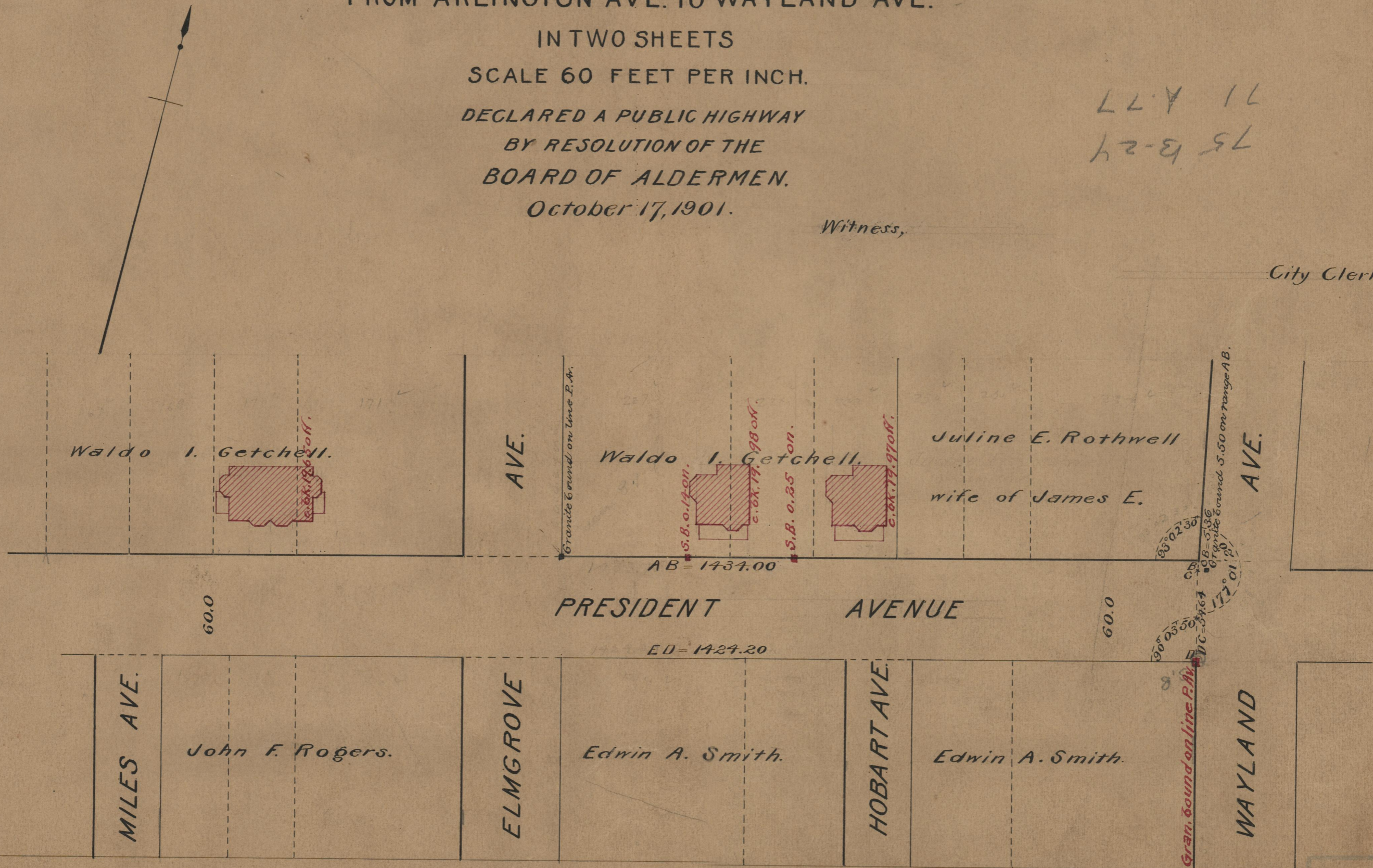
PLAT OF
PRESIDENT AVENUE
FROM ARLINGTON AVE. TO WAYLAND AVE.

IN TWO SHEETS
SCALE 60 FEET PER INCH.
DECLARED A PUBLIC HIGHWAY
BY RESOLUTION OF THE
BOARD OF ALDERMEN.
October 17, 1901.

75 B-24
71 A-77

Witness,

City Clerk.



75
A-86

OFFICE No. 14509
DRAWER 75
A-86