

CITY ENGINEER'S OFFICE
STREET LINE DEPT.
Oct. 7, 1901.
030381

Note, The limits of the area declared a public highway are indicated by the letters ABCDEFGH. The lines conform to deed in Deed Book 365, page 172, in the office of the Recorder of deeds.

PLAT OF LELAND STREET

FROM EDITH ST. TO PROMENADE ST.

SCALE 50 FEET PER INCH,

DECLARED A PUBLIC HIGHWAY
BY RESOLUTION OF THE
BOARD OF ALDERMEN,

September 5, 1901..

On August 6, 1908 Leland St. was, by resolution of the B. of A., extended from the angle to the connection with the south line of Edith St. shown by the red lines; and, by a corresponding resolution, the portion of Leland St. cut off by the red lines was declared useless and abandoned.

Notes in red added June 22, 1908.

153.31.20
26.28.40
90.84.20
116.33.00
63.27

63.27 0.048398 63.27 0.048398
90.04.20 0.000000 26.28.40 9.649189
130.90 2.116940 130.90 2.116940
2.165338 1.814527
146.33 65.24

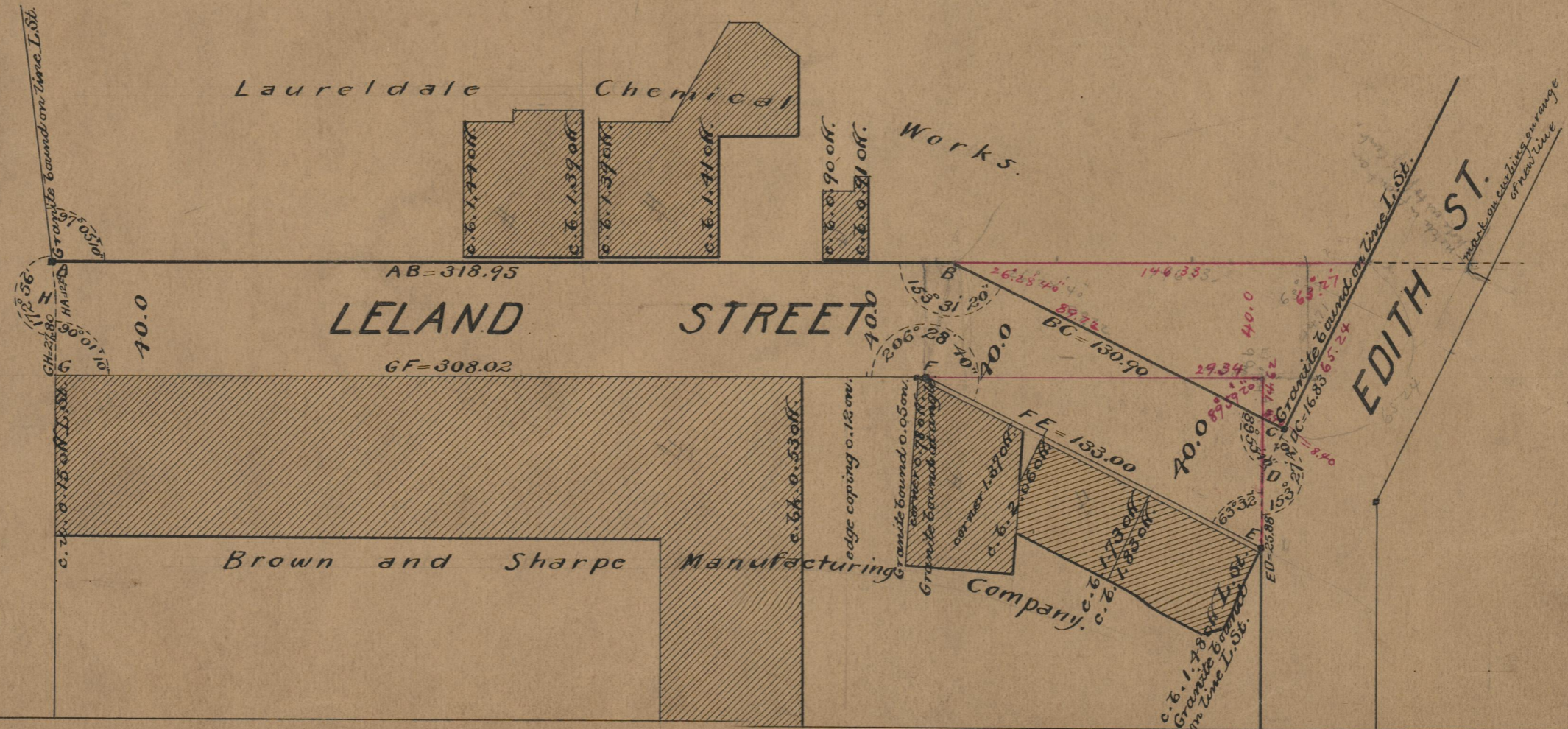
cut 26.28.40 0.302636 + 200' 63.27 9.698685
40 1.602060 1.602060
1.904746 = 80.31 1.300745 = 19.90
Sum 0.350811 Sum 68.27 0.048398
1.602060 1.602060
1.952871 = 89.716 1.650458
44.716

318.95
130.90
138.60
308.02
2390.87
475.435

26.31
17.77
100.30
146.33
46.03



PROMENADE ST.



318.95
130.90
138.60
308.02

OFFICE No. 14505
DRAWER " 75
SHEET " A-82