

PROVIDENCE, R.I.  
CITY ENGINEER'S OFFICE  
STREET LINE DEPT.  
July 29, 1901.  
030254

Note; The area declared a public highway  
is indicated by the letters ABC.

The lines conform to deed in  
Deed Book 387, page 369 in the office of the  
Recorder of Deeds

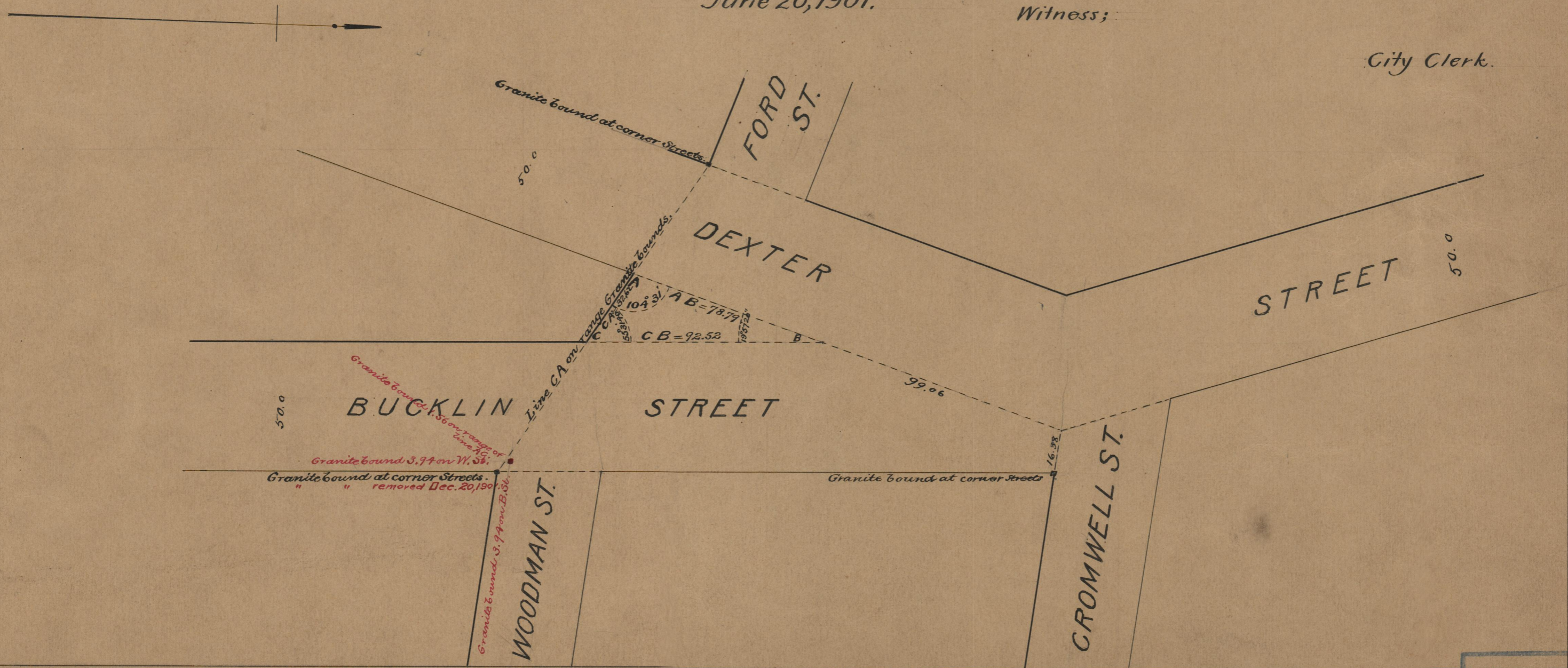
# PLAT OF TRIANGULAR TRACT OF LAND

AT JUNCTION OF  
DEXTER ST. AND BUCKLIN ST.  
SCALE 40 FEET PER INCH.

DECLARED A PUBLIC HIGHWAY  
BY RESOLUTION OF THE  
BOARD OF ALDERMEN,  
June 20, 1901.

Witness;

City Clerk.



OFFICE No.	14469
DRAWER "	75
SHEET "	A-77