

PROVIDENCE, R.I.  
CITY ENGINEER'S OFFICE  
STREET LINE DEPT.

Sept. 3, 1901

030324

Note, The area declared a public highway is indicated by the letters A B C D E F G.  
The lines thus fixed conform to plat in Plat Book 24 on page 25 in the office of the recorder of deeds to which the deed recorded in Deed Book 439, page 313, refers.

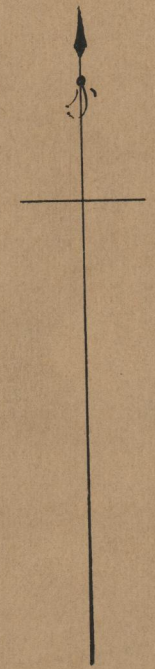
# PLAT OF BRIGHTON STREET

FROM VINTON ST. TO VERNON ST.

SCALE 40 FEET PER INCH.

DECLARED A PUBLIC HIGHWAY  
BY RESOLUTION OF THE  
BOARD OF ALDERMEN  
July 10, 1901.

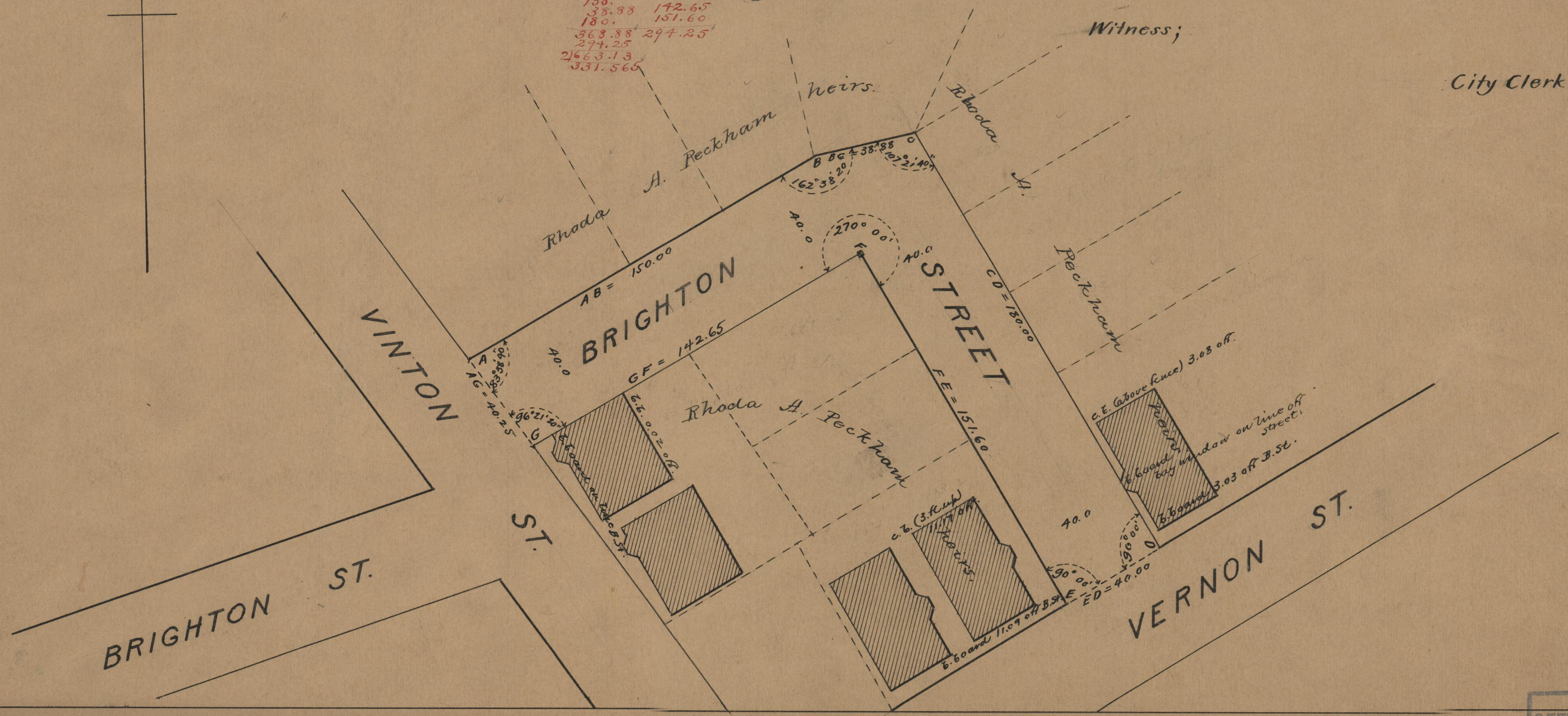
Changed to Primrose Street,  
Oct. 17, 1901



150.  
38.88 142.65  
180. 151.60  
368.88 294.25  
277.25  
2663.13  
331.566

Witness;

City Clerk.



75  
A-76

OFFICE No. 14494  
DRAWER " 75  
SHEET " A-76

76