

433

ESM XIX 130

PROVIDENCE, R.I.  
CITY ENGINEER'S OFFICE  
STREET LINE DEPT.  
Aug. 26, 1901.  
030301

Note, The area declared a public highway is indicated by the letters A B C D, the dimensions and angles being taken from the deed recorded in deed book 439, page 75 in the office of the recorder of deeds. (shown here on in red)

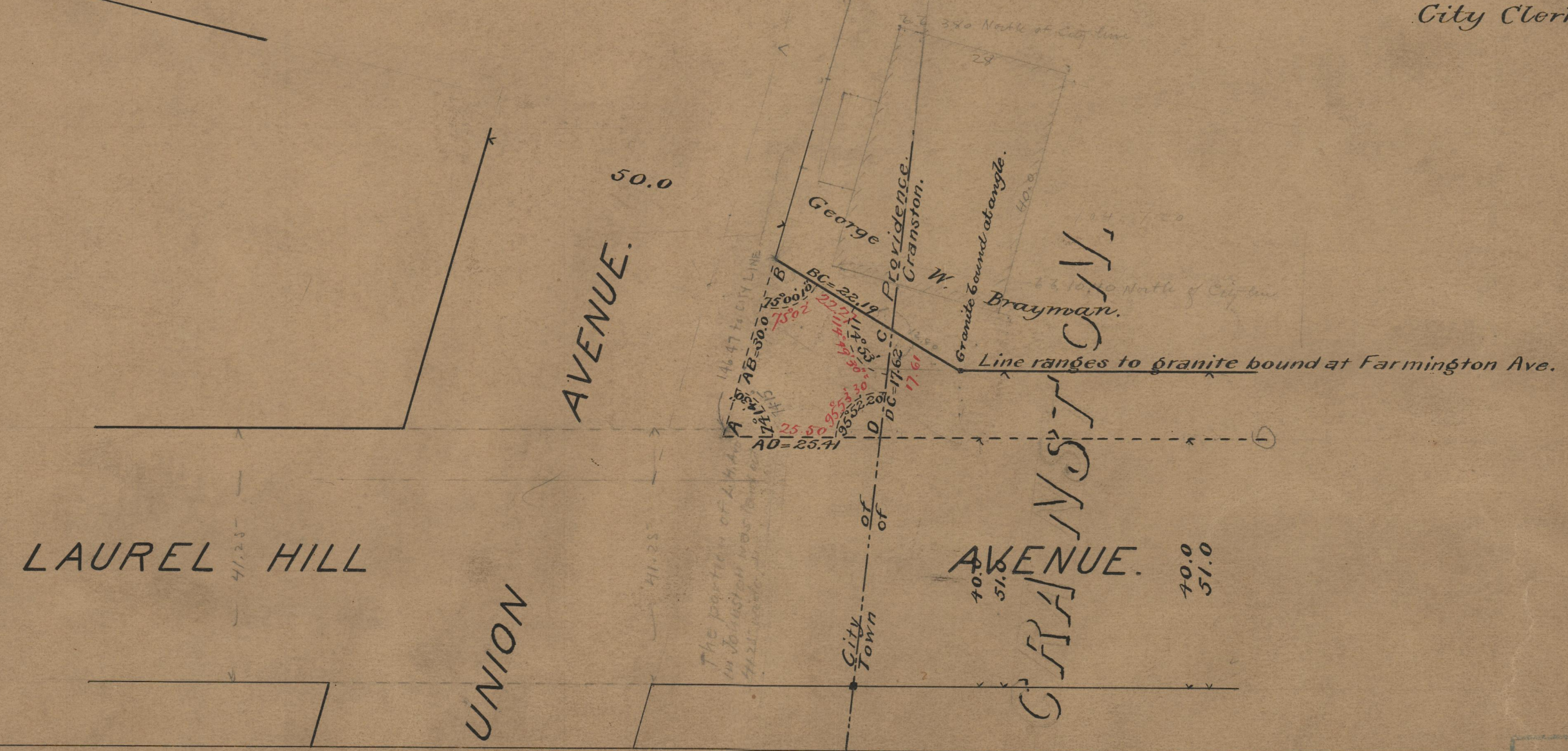
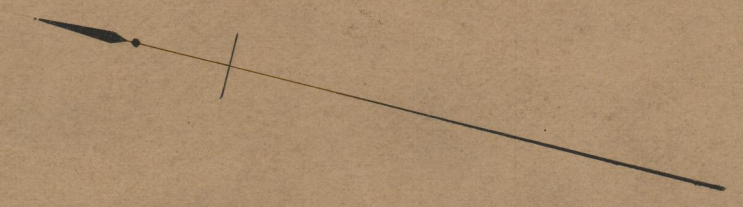
PLAT OF  
**TRACT OF LAND**  
AT CORNER OF  
UNION AVE. AND LAUREL HILL AVE.  
SCALE 20 FEET PER INCH.

DECLARED A PUBLIC HIGHWAY  
BY RESOLUTION OF THE  
BOARD OF ALDERMEN.  
July 13, 1901.

The figures in red are copied from deed which was made up from plan from Union Railroad office. Figures in black from actual survey by S. L. Dept. Differences were caused by slight variation in position of city line and perhaps of the lines of Union Ave

Witness;

City Clerk.



OFFICE No. 17482  
DRAWER " 75  
SHEET " A-75