

PROVIDENCE, R.I.  
CITY ENGINEER'S OFFICE  
STREET LINE DEPT.  
Aug. 21, 1901.

030293

Note. The area declared a public highway is indicated by the letters ABCD.  
The lines thus fixed agree with the deed recorded in deed book 440 on page 316.

# PLAT OF ORIOLE AVENUE

FROM PATERSON ST. TO RHODE ISLAND AVE.

SCALE 50 FEET PER INCH.

DECLARED A PUBLIC HIGHWAY  
BY RESOLUTION OF THE  
BOARD OF ALDERMEN,

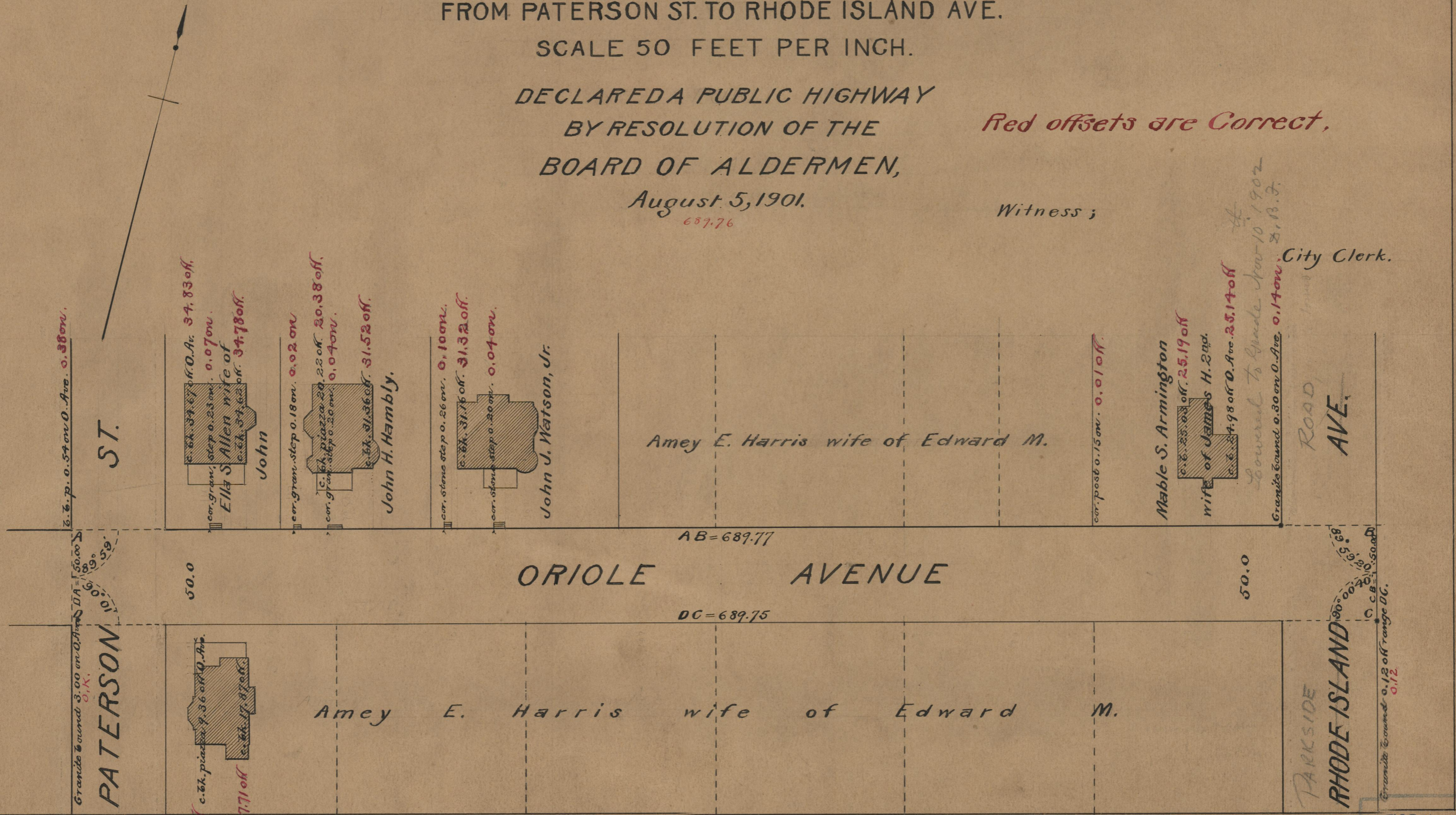
August 5, 1901.

*Red offsets are Correct,*

Witness;

689.76

City Clerk.



Granite bound 3.00 on 0.54 on 0. Ave. 0.38 on.

ST.

c. bk. 34.67 off 0. Av. 34.83 off.  
cor. gran. step 0.23 on. 0.07 on.  
Ella S. Allen wife of John

cor. gran. step 0.18 on. 0.02 on.  
c. bk. piazza 20.22 off. 20.38 off.  
cor. gran. step 0.20 on. 0.04 on.  
John H. Hambly.

cor. stone step 0.26 on. 0.10 on.  
c. bk. 31.76 off. 31.32 off.  
cor. stone step 0.20 on. 0.04 on.  
John J. Watson, Jr.

Amey E. Harris wife of Edward M.

cor. post 0.15 on. 0.01 off.

Mable S. Armington  
c. bk. 23.03 off. 25.19 off.  
wife of James H. 2nd.

Granite bound 0.30 on 0. Ave. 0.14 on. 2, P. F.

City Clerk.

Granite bound 3.00 on 0.54 on 0. Ave. 0.38 on.  
PATERSON

9.20 off c. bk. piazza 9.36 off 0. Ave.  
17.71 off c. bk. 17.87 off.

Amey E. Harris wife of Edward M.

PARKSIDE  
RHODE ISLAND

Granite bound 0.12 off range DG.  
0.12

OFFICE No. 14480  
DRAWER " 75  
SHEET " A-73