

PROVIDENCE, R.I.
CITY ENGINEER'S OFFICE
STREET LINE DEPT.
June 18, 1901.

030161

Note, The area declared a public highway is indicated by the letters ABCDEFGHIJ.
The lines thus fixed agree with deed recorded in deed book 437 on page 280.

PLAT OF BORDEN STREET

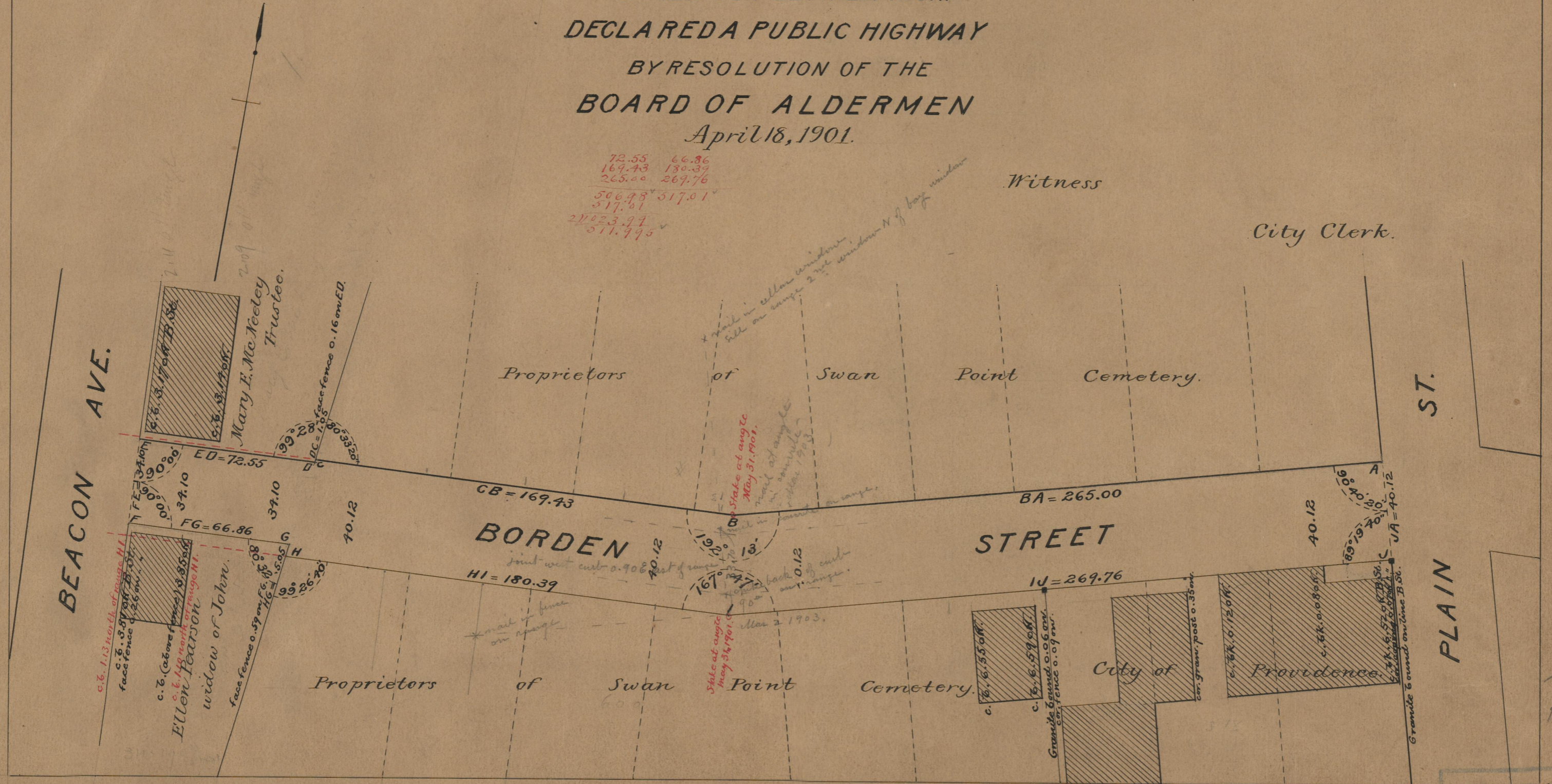
FROM PLAIN ST. TO BEACON AVE.

SCALE 40 FEET PER INCH.
DECLARED A PUBLIC HIGHWAY
BY RESOLUTION OF THE
BOARD OF ALDERMEN
April 18, 1901.

72.55 66.86
169.43 180.39
265.00 269.76
506.98 517.01
517.01
27623.94
511.995

Witness

City Clerk.



75
A-70

OFFICE No. 14446
DRAWER " 75
SHEET " A-70