

PROVIDENCE, R.I.
CITY ENGINEER'S OFFICE
STREET LINE DEPT.
June 18, 1901.

030167

Note, The area declared a public highway
is indicated by the letters ABCD.

The lines thus fixed agree with deed
recorded in deed book 373 on page 431.

PLAT OF
LENOX AVENUE
FROM ELMWOOD AVE. TO HAMILTON ST.

IN TWO SHEETS

SCALE 60 FEET PER INCH.

DECLARED A PUBLIC HIGHWAY

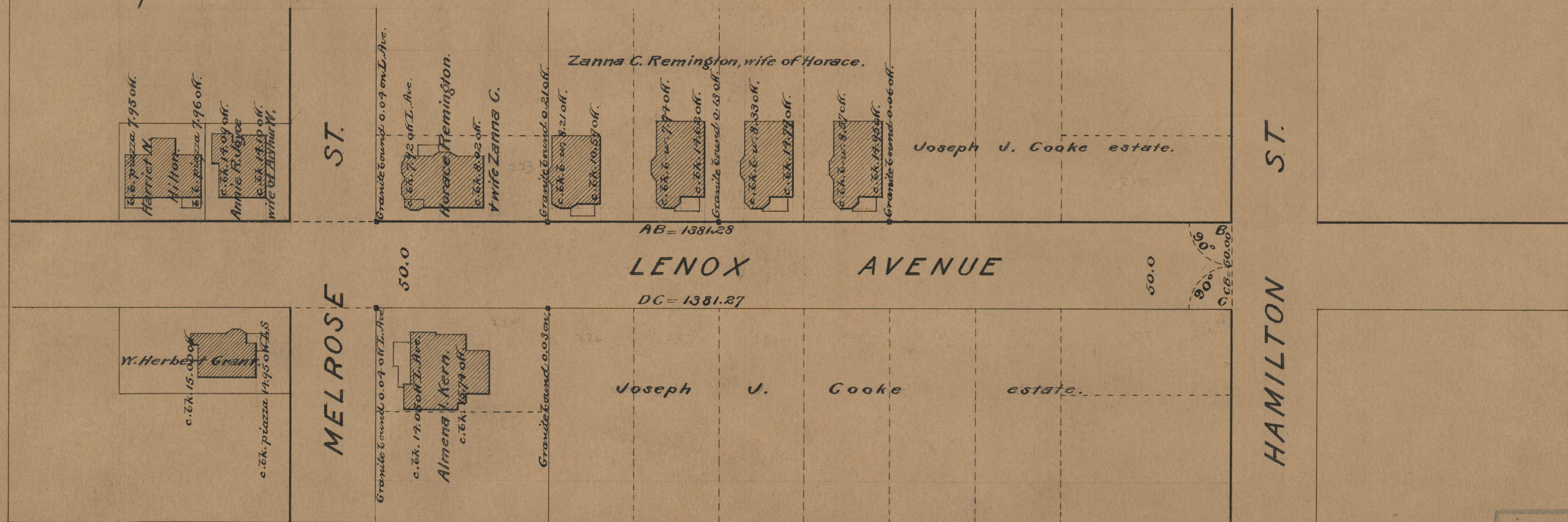
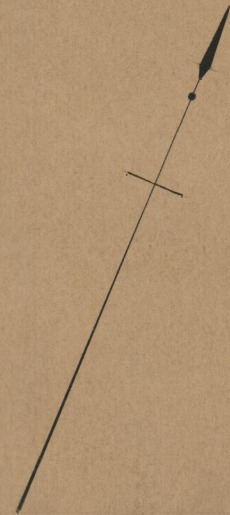
BY RESOLUTION OF THE

BOARD OF ALDERMEN

April 18, 1901.

Witness

City Clerk.



OFFICE No. 14445
DRAWER " 75
SHEET " 4-69