

PROVIDENCE, R.I.
CITY ENGINEER'S OFFICE
STREET LINE DEPT.
Jan. 7, 1901.
029814

Note, The area, declared a public highway,
is indicated by the letters A, B, C and D.

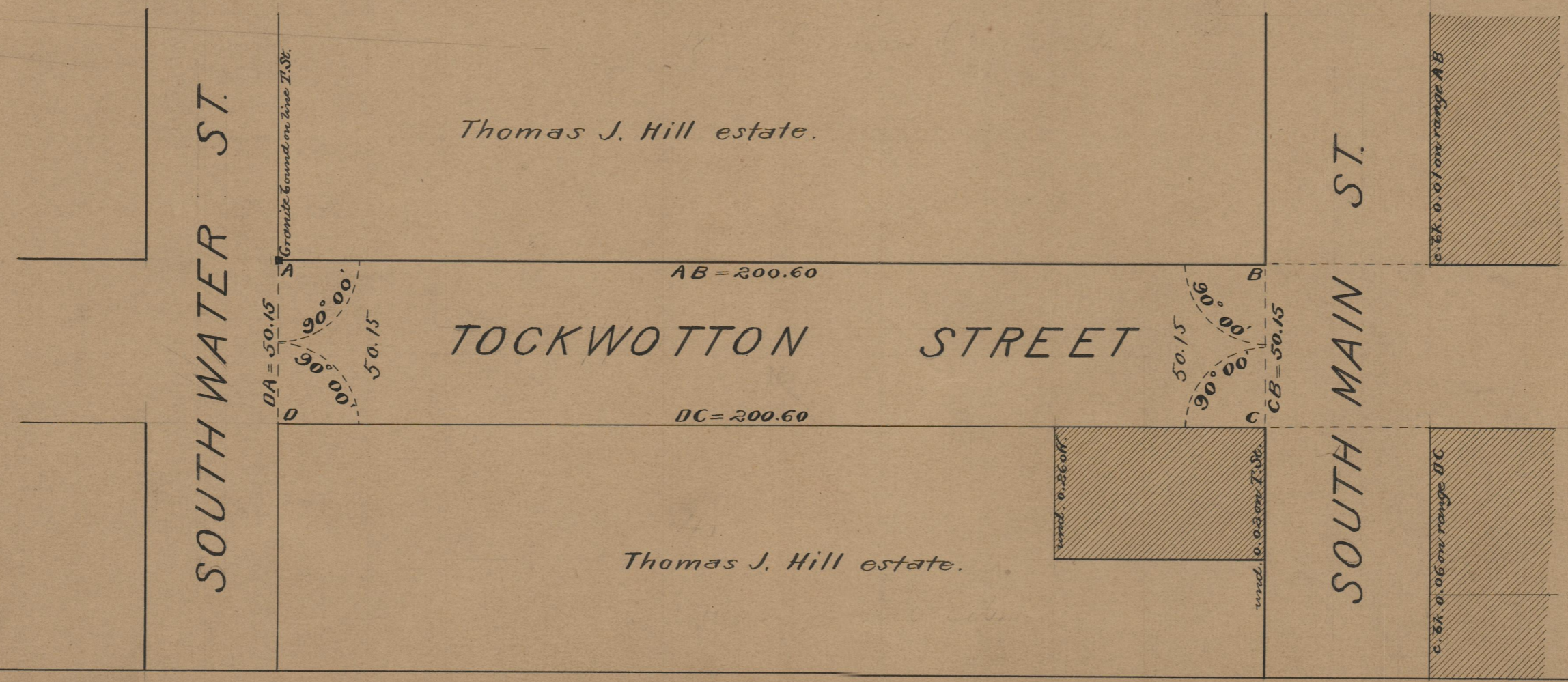
PLAT OF TOCKWOTTON STREET

FROM S. WATER ST. TO S. MAIN ST.

SCALE 40 FEET PER INCH.

**DECLARED A PUBLIC HIGHWAY,
BY RESOLUTION OF THE
BOARD OF ALDERMEN.**

200.60



OFFICE No.	14389
DRAWER	75
SHEET	A-64