

PROVIDENCE, R.I.
CITY ENGINEER'S OFFICE
STREET LINE DEPT.

Dec. 10, 1900

029780

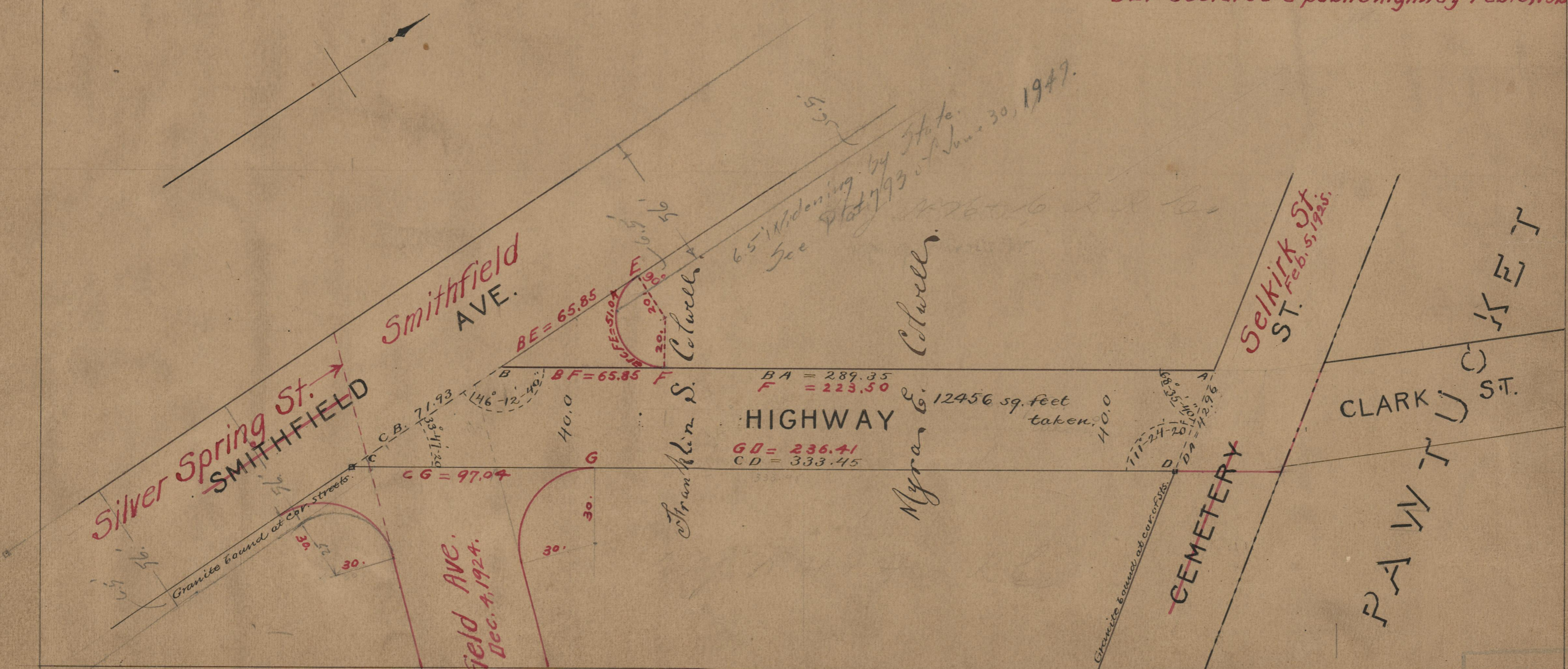
PLAT OF
A HIGHWAY
FROM CEMETERY ST. TO SMITHFIELD AVE.

SCALE 40 FEET PER INCH.

289.35
333.45
2)622.80
311.70

Named Selkirk St June 20, 1901.

*Note: The area indicated by the letters
BEF declared a public highway Feb. 5, 1925.*



OFFICE No. 14371
DRAWER " 75
SHEET " A-62