

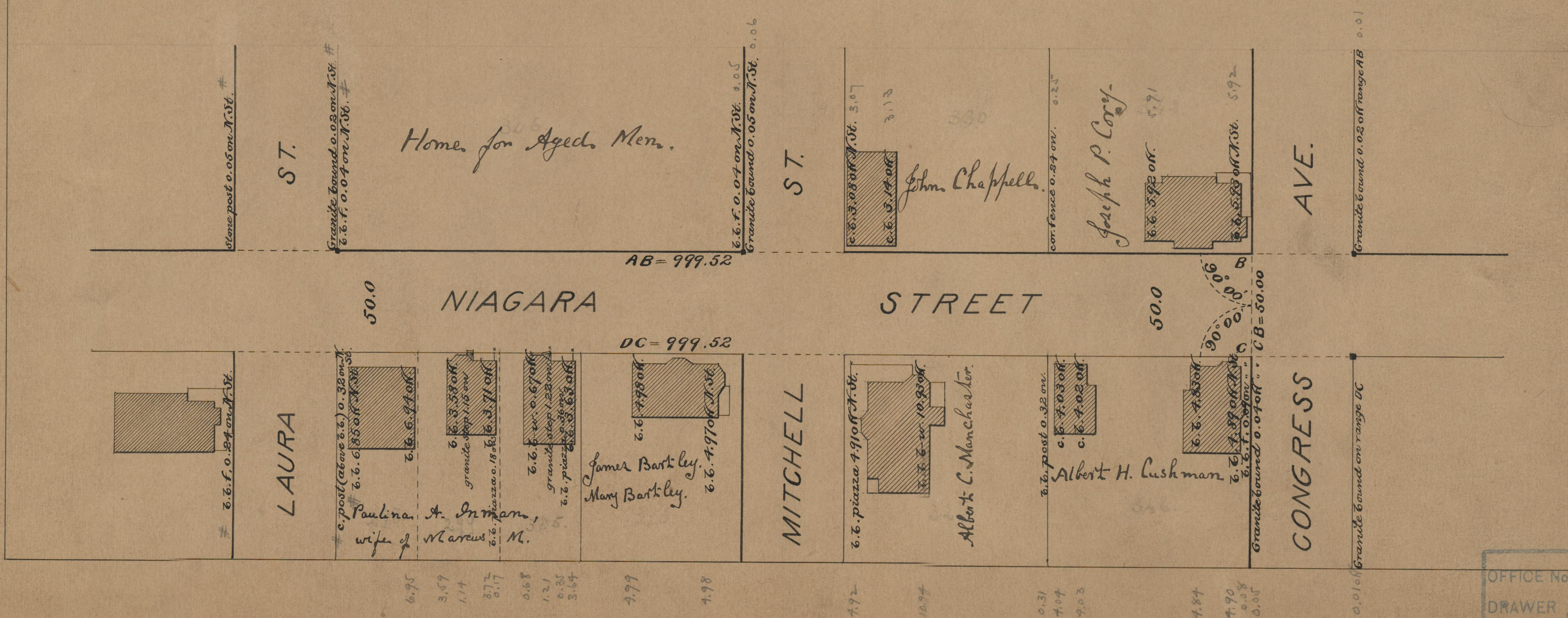
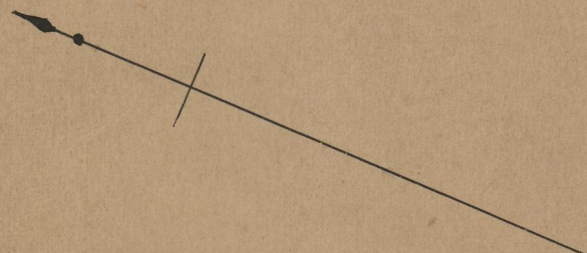
PROVIDENCE, R.I.
CITY ENGINEER'S OFFICE
STREET LINE DEPT.
Nov. 8, 1900.
029743

PLAT OF
NIAGARA STREET

FROM STANWOOD ST. TO CONGRESS AVE.

IN TWO SHEETS

SCALE 50 FEET PER INCH.



OFFICE No. 14365
DRAWER " 75
SHEET " A-61