

PROVIDENCE, R.I.
CITY ENGINEER'S OFFICE
STREET LINE DEPT.
Nov. 8, 1900.
029742

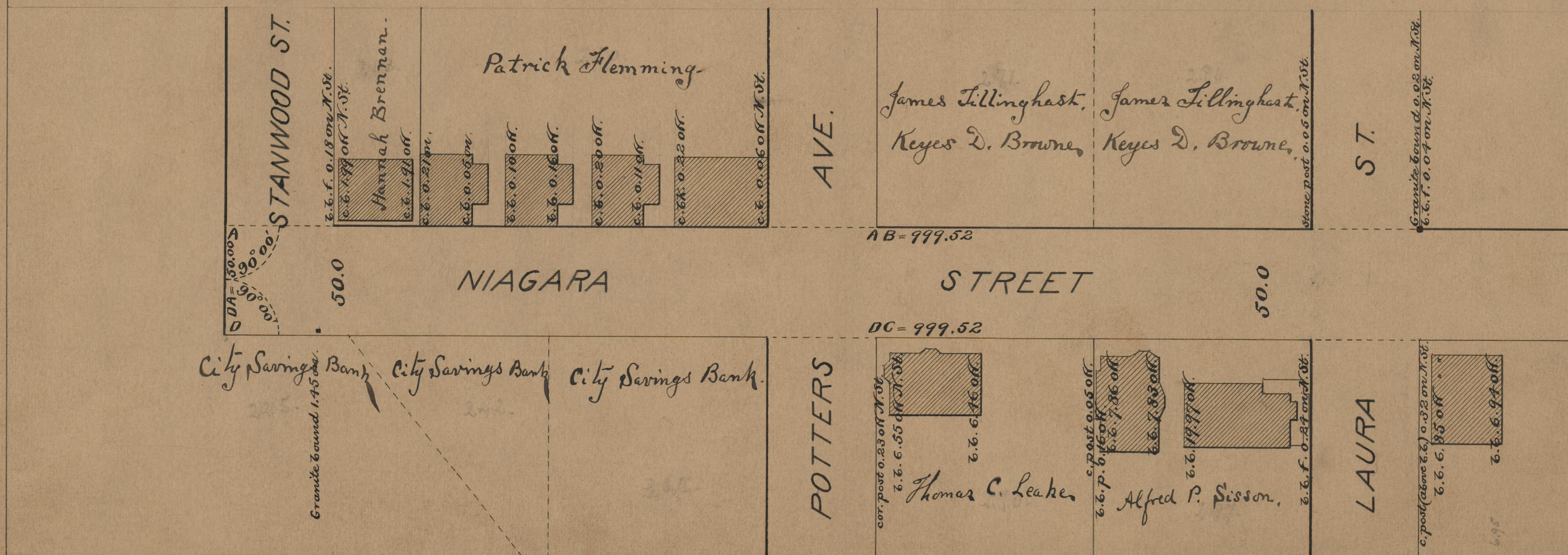
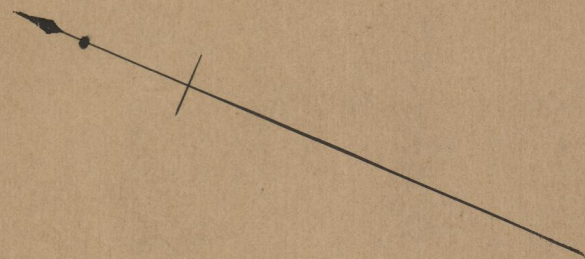
PLAT OF NIAGARA STREET

FROM STANWOOD ST. TO CONGRESS AVE.

IN TWO SHEETS

SCALE 50 FEET PER INCH.

999.52



OFFICE No. 17364
 DRAWER 75
 SHEET A-60