

Note, The area declared a public highway is indicated by the letters A, B, C and D.

PROVIDENCE, R.I.
CITY ENGINEER'S OFFICE
STREET LINE DEPT.
Oct. 3, 1900.
029667

PLAT OF PRISCILLA AVENUE

FROM UNION AVE. TO STERLING AVE.

IN TWO SHEETS.

SCALE 60 FEET PER INCH.

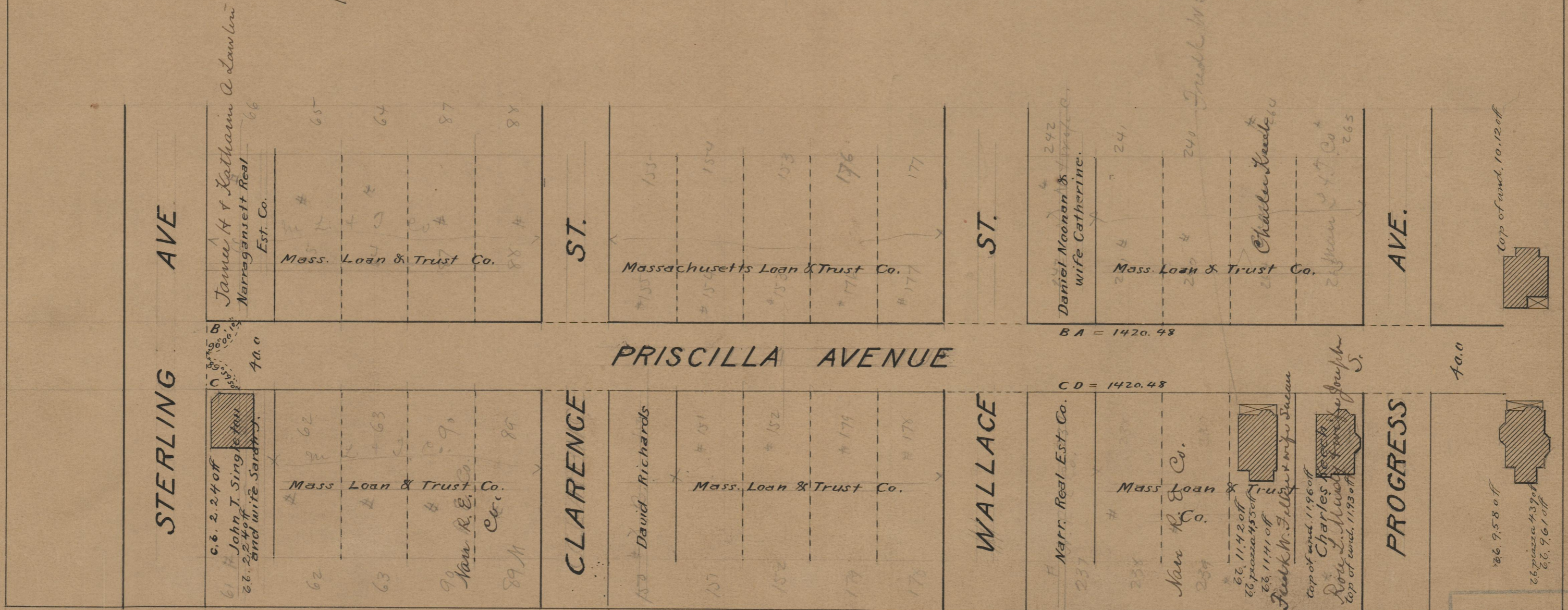
DECLARED A PUBLIC HIGHWAY

BY RESOLUTION OF THE

BOARD OF ALDERMEN

September 6, 1900.

Witness, -----



OFFICE No. 17337
 DRAWER " 75
 SHEET " A-58