

PROVIDENCE, R.I.  
CITY ENGINEER'S OFFICE  
STREET LINE DEPT.

Oct. 3, 1900

029666

Note; The area declared a public highway is indicated by the letters A, B, C and D.

# PLAT OF PRISCILLA AVENUE

FROM UNION AVE. TO STERLING AVE.

IN TWO SHEETS

SCALE 60 FEET PER INCH.

DECLARED A PUBLIC HIGHWAY

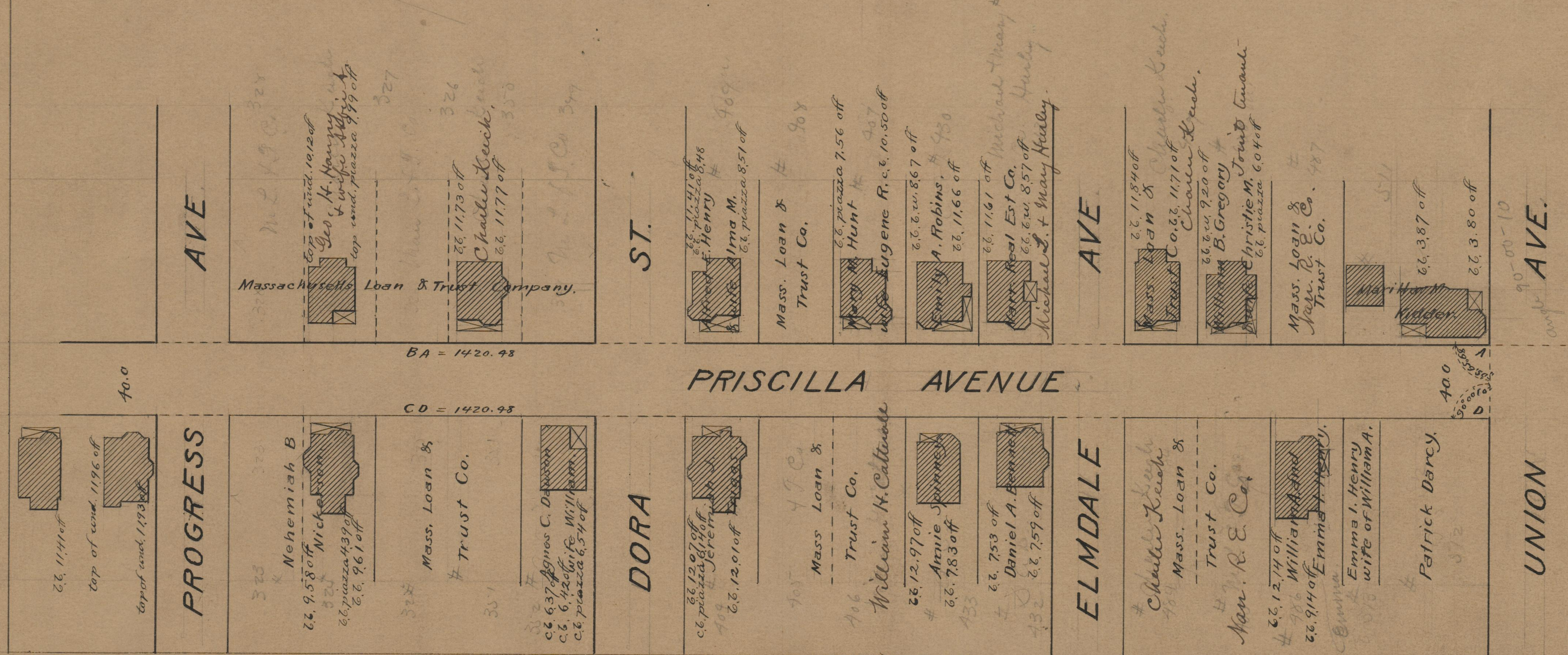
BY RESOLUTION OF THE

BOARD OF ALDERMEN

September 6, 1900.

1420.48

Witness;



OFFICE No. 17333  
DRAWER 75  
SHEET A-57

Granite bound 10.00 from range