

PROVIDENCE, R.I.  
CITY ENGINEER'S OFFICE  
STREET LINE DEPT.  
Sept. 27, 1900.  
029655

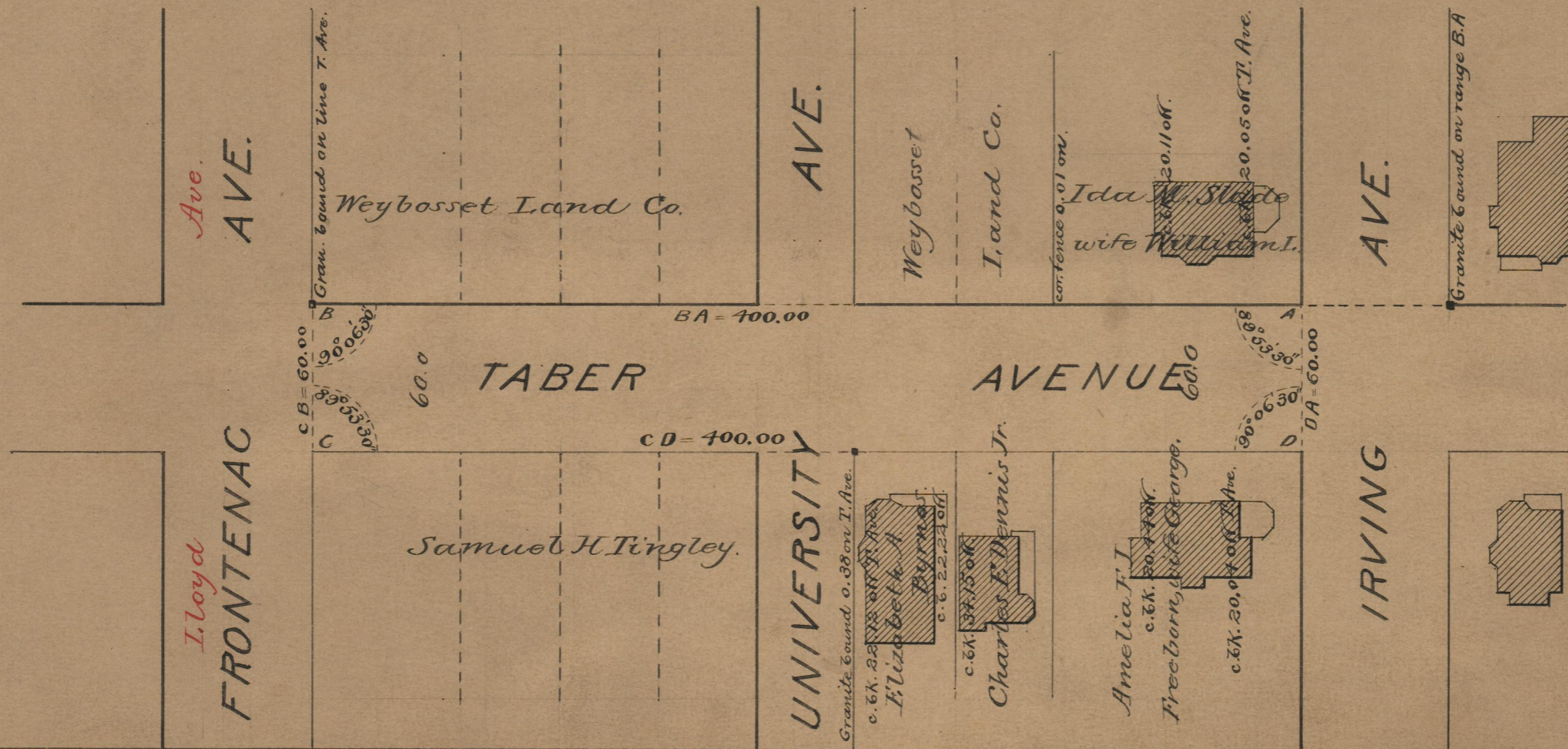
Note. The area declared a public highway  
is indicated by the letters A, B, C, and D.  
The lines thus fixed agree with  
deeds recorded in Deed Books 365, page 270;  
366, page 323 and 387, pages 122 and 458.

PLAT OF  
**TABER AVENUE**  
FROM IRVING AVE. TO FRONTENAC AVE.  
SCALE 60 FEET PER INCH.

DECLARED A PUBLIC HIGHWAY  
BY RESOLUTION OF THE  
BOARD OF ALDERMEN,

September 20, 1900.

Witness: \_\_\_\_\_



OFFICE No. 14332  
DRAWER 75  
SHEET A-56