

PROVIDENCE, R.I.
CITY ENGINEER'S OFFICE
STREET LINE DEPT.
Sept. 12, 1900.
029624

Note: The area declared a public highway is indicated by the letters A B C and D. The lines thus fixed agree with deeds recorded in Deed Books 365 pages 79 & 270; 366, page 323 and 387 page 458.

PLAT OF FRONTENAC AVENUE

FROM ARLINGTON AVE. TO SLATER AVE.

IN TWO SHEETS

SCALE 80 FEET PER INCH.

DECLARED A PUBLIC HIGHWAY

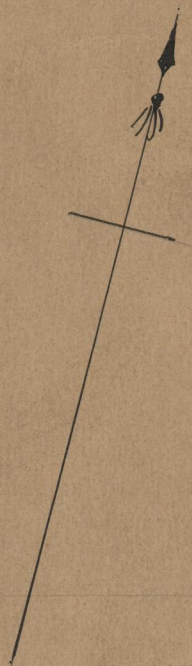
BY RESOLUTION OF THE

BOARD OF ALDERMEN,

August 2, 1900

Witness, _____

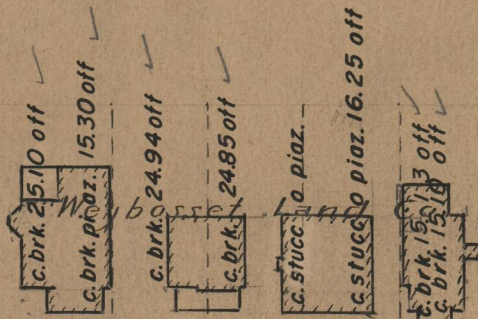
Changed to Lloyd Ave. Mar. 21, 1901.



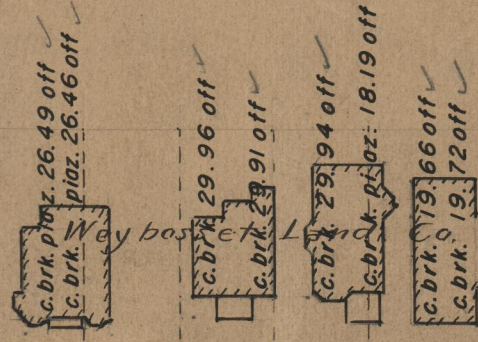
HOBERT AVE.

Louis N. Colwell.

AVE.

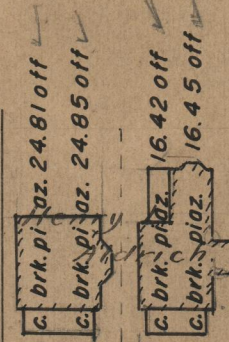


EDISON AVE.

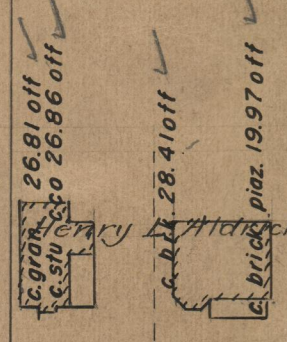


AVE.

Elenora F. Eddy
wife of
Forrest G.



LORRAINE AVE.



Amy E. Harris,
wife of Edward M.

AVE.

AB = 2411.50

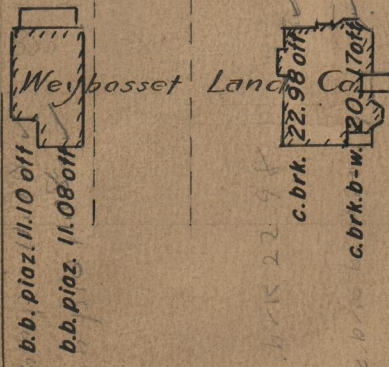
FRONTENAC AVENUE.

DC = 2402.35

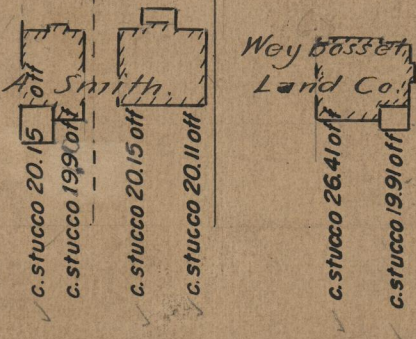
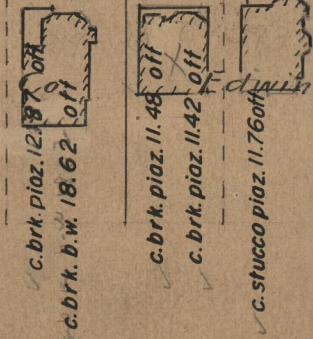
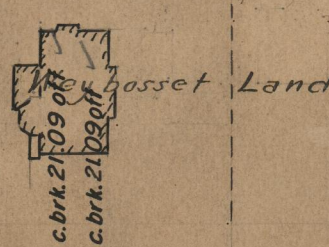
60.0

60.0

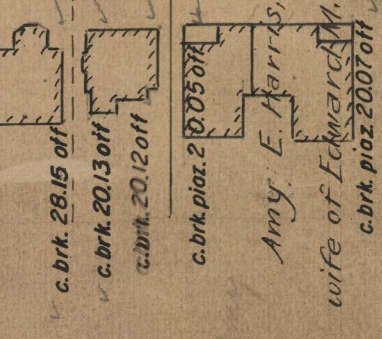
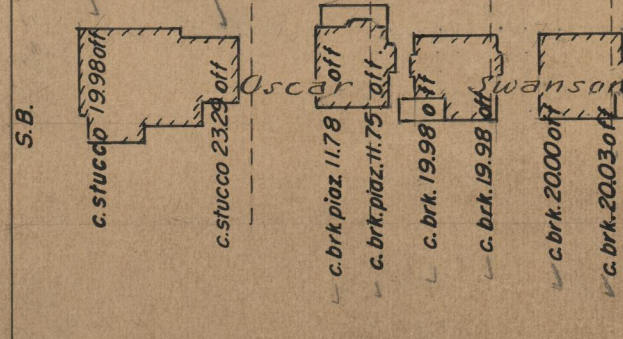
90° 30' 00" B
C 20' 00" B
CB = 60.00



WAYLAND AVE.



COLE HUMBOLDT AVE.



SLATER AVE.

Granite bound on range! Ave.

OFFICE No. 14325
DRAWER " 75
SHEET " A-54