

Floyd Ave Sec 3039-146

F.B.B.-XIX-101-102

PROVIDENCE, R.I.
CITY ENGINEER'S OFFICE
STREET LINE DEPT.
Sept. 12, 1900.
029623

Note; The area declared a public highway is indicated by the letters A B C and D. The lines thus fixed agree with deeds recorded in Deed Books 365 pages 79 & 270; 366, page 323 and 387 page 458.

PLAT OF FRONTENAC AVENUE

FROM ARLINGTON AVE. TO SLATER AVE.

IN TWO SHEETS

SCALE 80 FEET PER INCH.

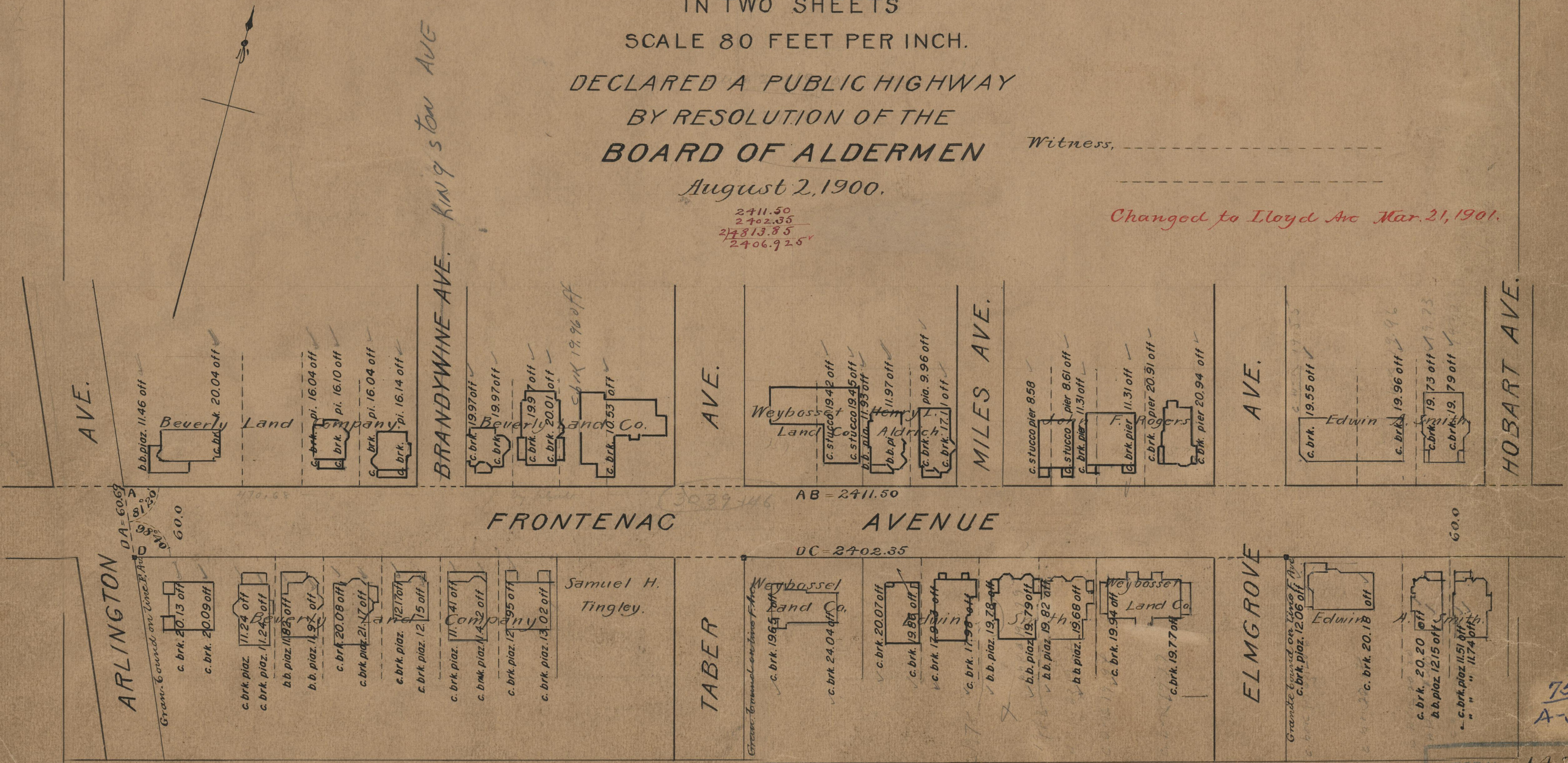
DECLARED A PUBLIC HIGHWAY
BY RESOLUTION OF THE
BOARD OF ALDERMEN

August 2, 1900.

Witness, _____

Changed to Lloyd Ave Mar. 21, 1901.

*2411.50
2402.35
27813.85
2406.925*



FRONTENAC AVENUE

ARLINGTON AVE.

BRANDYWINE AVE. *Kingston Ave*

AVE.

MILES AVE.

AVE.

HOBART AVE.

ARLINGTON

TABER

ELMGROVE

OFFICE No. 145
DRAWER 75
SHEET

*75
A-53*