

J. S. Dwyer Eng.

P.S.M. XXIV 181

PROVIDENCE, R.I.
CITY ENGINEER'S OFFICE

STREET LINE DEPT.

Aug. 15, 1900.

029563

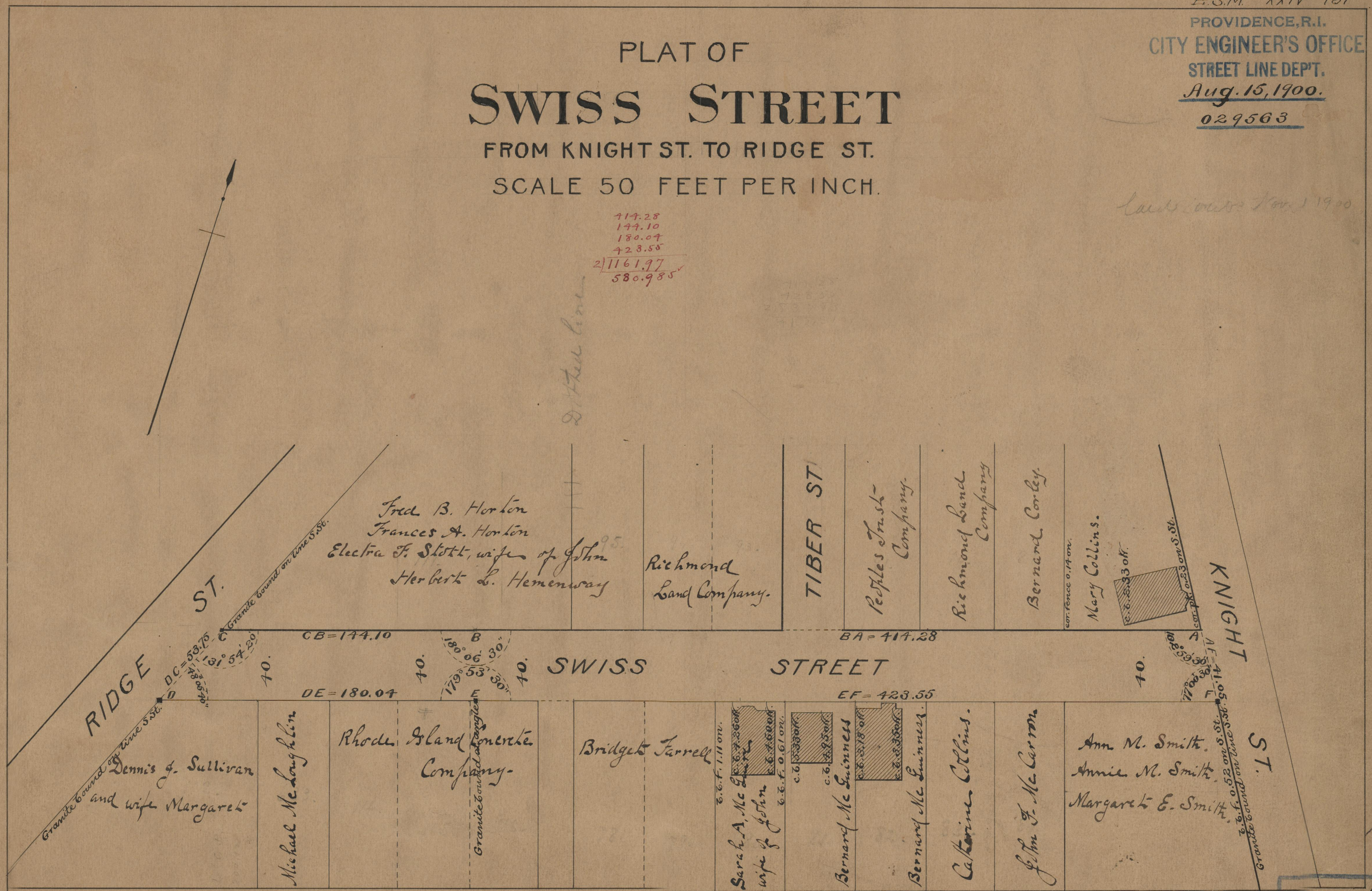
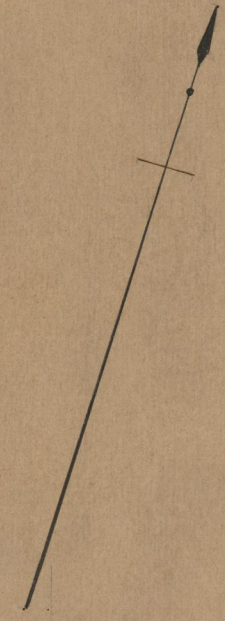
PLAT OF SWISS STREET

FROM KNIGHT ST. TO RIDGE ST.

SCALE 50 FEET PER INCH.

717.28
177.10
180.07
423.55
2)1161.97
580.985

cuts over Nov. 1900



75
A-52

OFFICE No. 14283
DRAWER " 75
SHEET " A-52