

PROVIDENCE, R.I.
CITY ENGINEER'S OFFICE
STREET LINE DEPT.
June 15, 1900.
029737

Note, The area, declared a public highway,
is indicated by the letters A, B, C, D, E, F, G
and H. The lines fixed, agree with deeds
recorded in deed books 420, p. 56, 423,
p. 376 and 431, p. 230.

PLAT OF PRESIDENT AVENUE

FROM BLACKSTONE BOULEVARD TO GROTTO AVENUE.

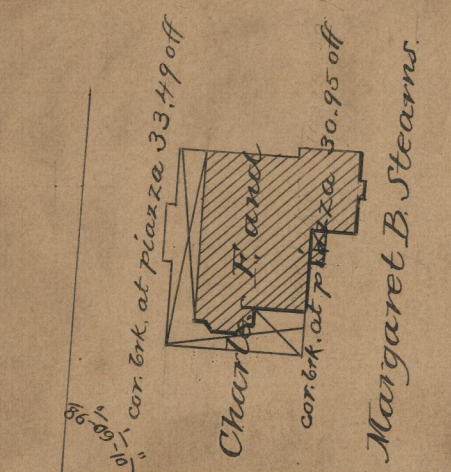
SCALE 50 FEET PER INCH.
DECLARED A PUBLIC HIGHWAY
BY RESOLUTION OF THE
BOARD OF ALDERMEN
May 17, 1900.

275.73
25.
275.07
25.
275.07
300.40

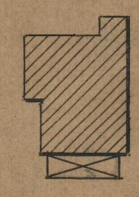


Granite bound 499.71
of range BA.

BLACKSTONE BOULEVARD

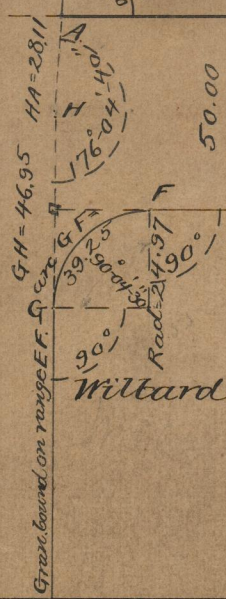


Frederick Danne.



AVE.

This line ranges to Gran. bound E, Side Loring Av.



PRESIDENT AVENUE

FE = 275.07

Edward M. Harris.

Wiltard B. Tanner.

GROTTO

G. B. raised to surface Apr. 3, 1922.

OFFICE No. 17262
DRAWER 75
SHEET 4-51