

PROVIDENCE, R.I.
CITY ENGINEER'S OFFICE
STREET LINE DEPT.
June 15, 1900
029732

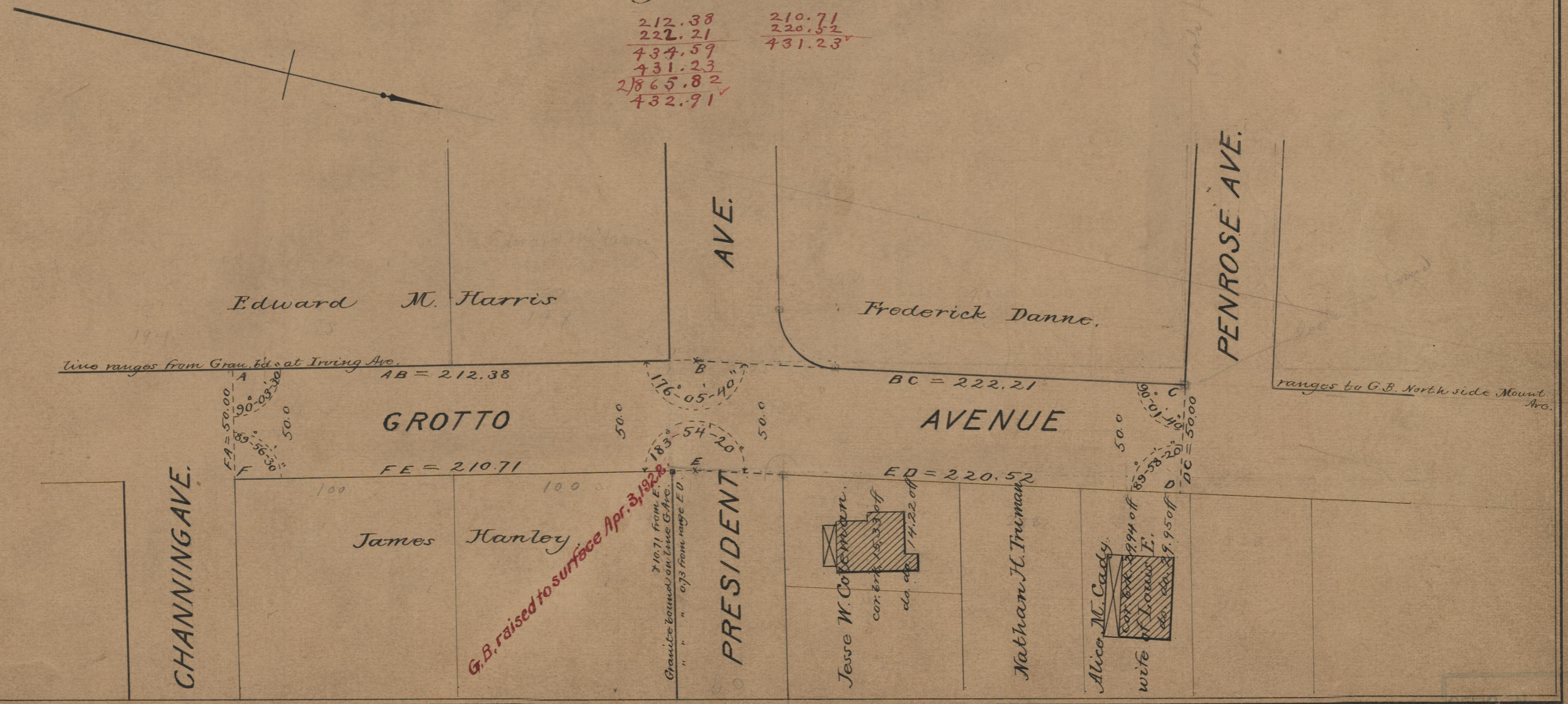
Note, The area declared a public highway,
is indicated by the letters A, B, C, D, E and F
The lines fixed agree with deed recorded in
deed book 431, page 230.

PLAT OF GROTTO AVENUE FROM CHANNING AVE TO PENROSE AVE.

SCALE 50 FEET PER INCH
DECLARED A PUBLIC HIGHWAY
BY RESOLUTION OF THE
BOARD OF ALDERMEN.
May 17, 1900.

212.38
222.21
434.59
431.23
2865.82
432.91

210.71
220.52
431.23



OFFICE NO. 17261
DRAWER 75
SHEET A-50