

CITY ENGINEER'S OFFICE
STREET LINE DEPT.
June 12, 1900.

029420

Note, The area declared a public highway is indicated by the letters A, B, C, D, E, F, G, H & I.

PLAT OF WINCHESTER PLACE

FROM ELMWOOD AVE. TO MELROSE ST.

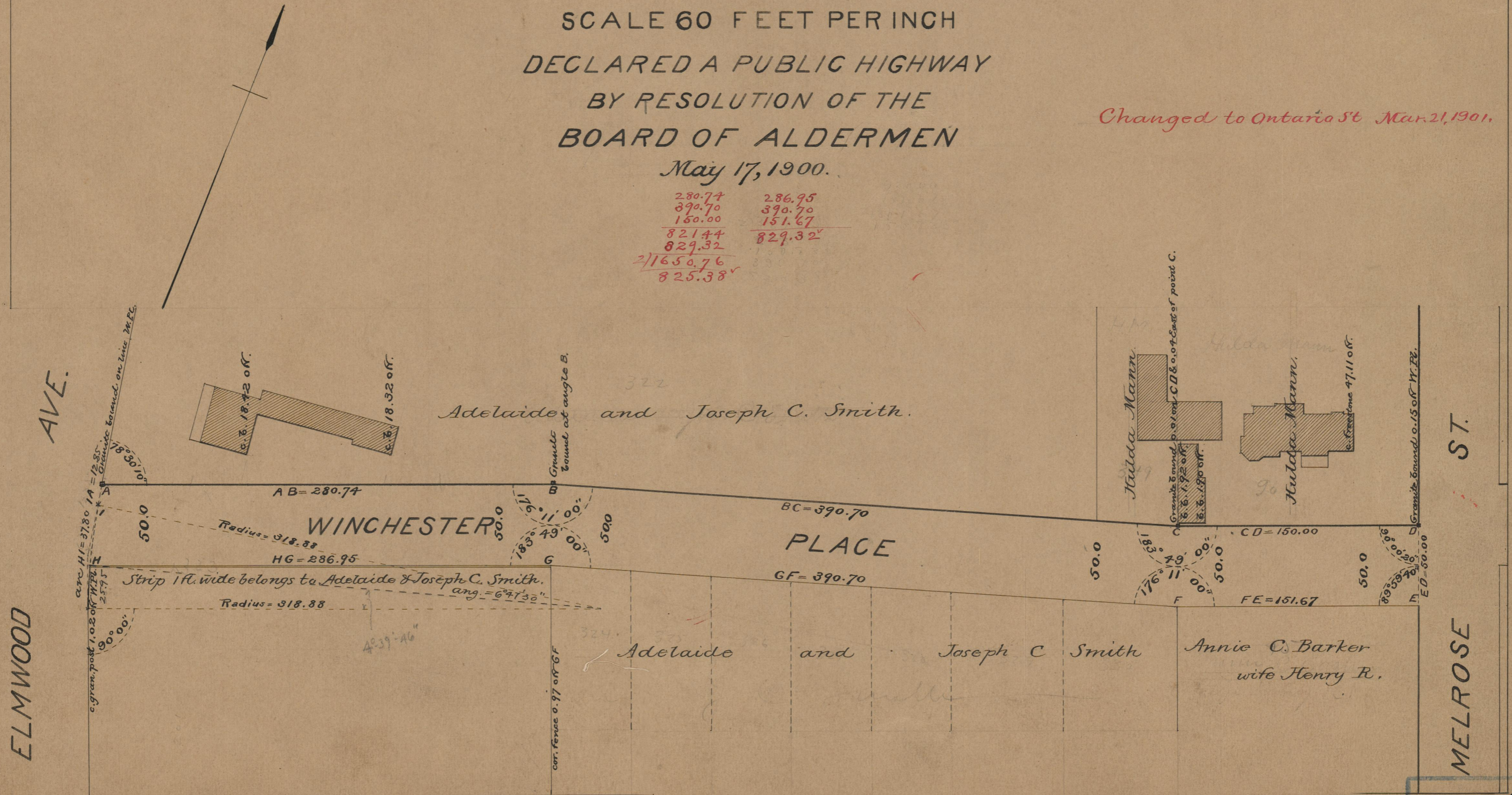
SCALE 60 FEET PER INCH

DECLARED A PUBLIC HIGHWAY
BY RESOLUTION OF THE
BOARD OF ALDERMEN

May 17, 1900.

Changed to Ontario St Mar. 21, 1901.

280.74	286.95
390.70	390.70
150.00	151.67
821.44	829.32
829.32	
2)1650.76	
825.38	



OFFICE No. 14259
 DRAWER " 75
 SHEET " A-49