

FBB-17-47

PROVIDENCE, R.I.  
CITY ENGINEER'S OFFICE  
STREET LINE DEPT.

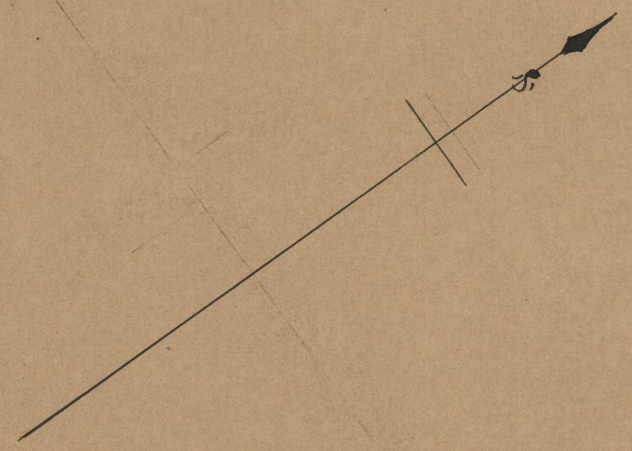
June 2, 1900

029382

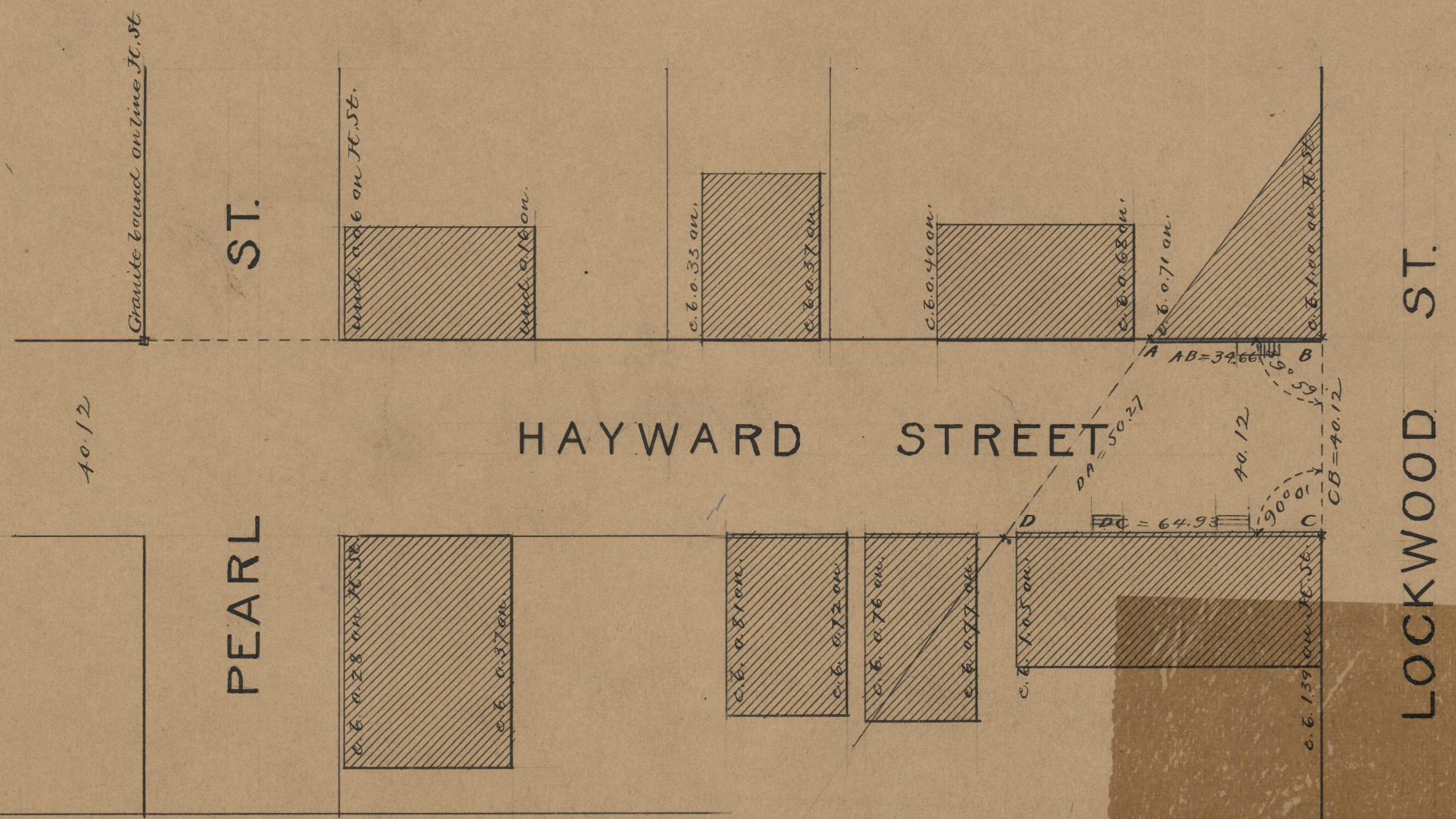
Note, The boundary of the land declared a public highway, is indicated by the letters ABCD. The lines shown agree with deed in Deed Book 428 page 85

# PLAT OF AN EXTENSION OF HAYWARD STREET

DECLARED A PUBLIC HIGHWAY  
BY RESOLUTION OF THE  
BOARD OF ALDERMEN  
June 7, 1900. Witness,  
SCALE 30 FEET PER INCH.



34.66  
64.93  
279.59  
49.795 ✓



OFFICE No 17258  
DRAWER 75  
SHEET A-48

UNIVERSITY OF MICHIGAN LIBRARY