

PROVIDENCE, R.I.
CITY ENGINEER'S OFFICE
STREET LINE DEPT.

May 12 1900

029332

Note, The lines of Berkshire street, defined hereon by the letters ABCD, agree with the deed conveying the same to the city for highway purposes. Said deed is recorded in the office of the recorder of deeds in deed book 410 on page 41.

PLAT OF BERKSHIRE STREET

FROM ADMIRAL ST. TO JUNE ST.

SCALE 40 FEET PER INCH

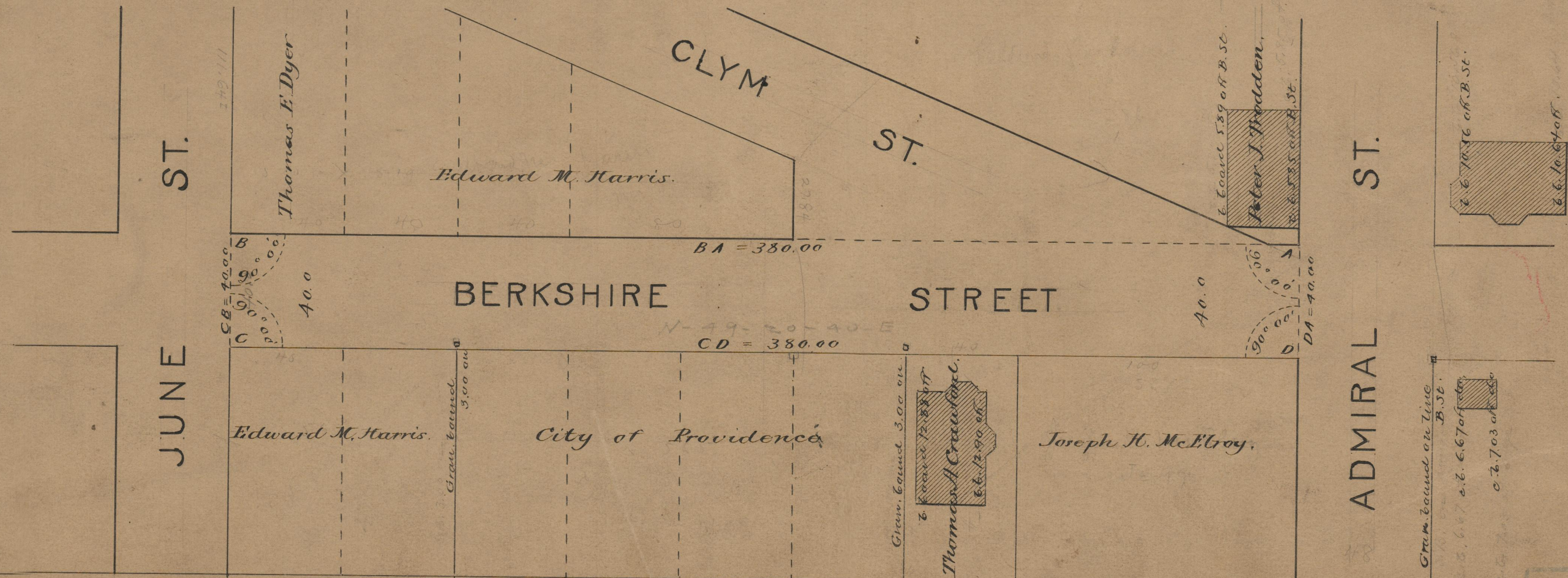
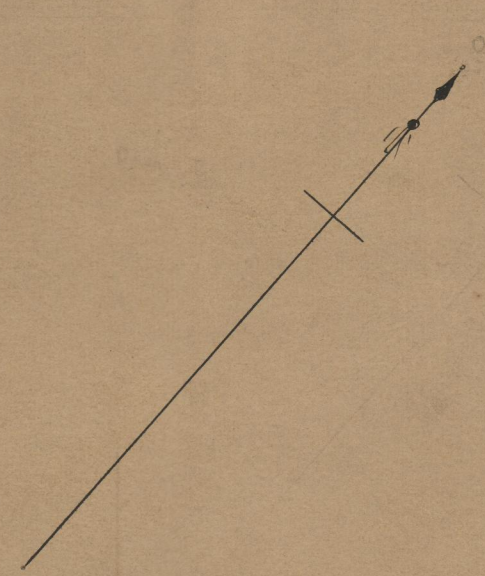
DECLARED A PUBLIC HIGHWAY

BY RESOLUTION OF THE

BOARD OF ALDERMEN

April 19, 1900

380'



OFFICE No. 14245
DRAWER 75
SHEET A-45