

D. W. F. "O" 98-9

PROVIDENCE, R.I.  
CITY ENGINEER'S OFFICE  
STREET LINE DEPT.  
Jan. 31, 1900.

028943

Jan. 18 1900

Note, The area included in Ralph street as declared a public highway is indicated by the letters A, B, C & D.

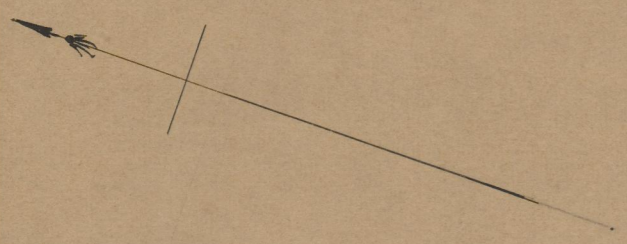
# PLAT OF RALPH STREET

FROM PLAINFIELD ST. TO DORCHESTER AVE.

DECLARED A PUBLIC HIGHWAY  
BY RESOLUTION OF THE  
BOARD OF ALDERMEN,  
January 18, 1900.

SCALE 60 FEET PER INCH.

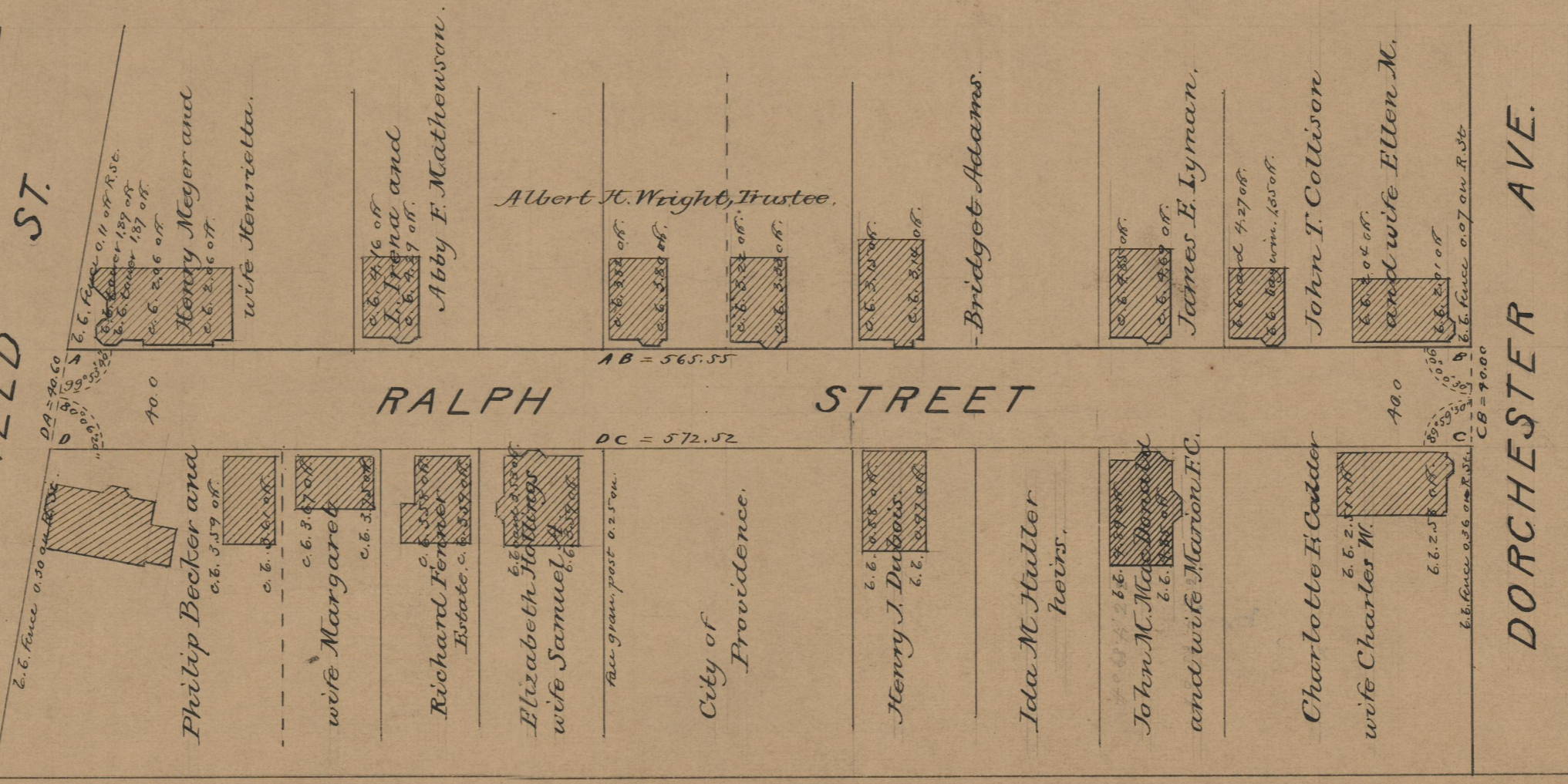
565.58  
572.52  
2)1138.07  
569.035



PLAINFIELD ST.

RALPH STREET

DORCHESTER AVE.



OFFICE No. 14049  
DRAWER " 75  
SHEET " A-44