

PROVIDENCE, R.I.  
CITY ENGINEER'S OFFICE  
STREET LINE DEPT.

Dec. 8, 1899

028844

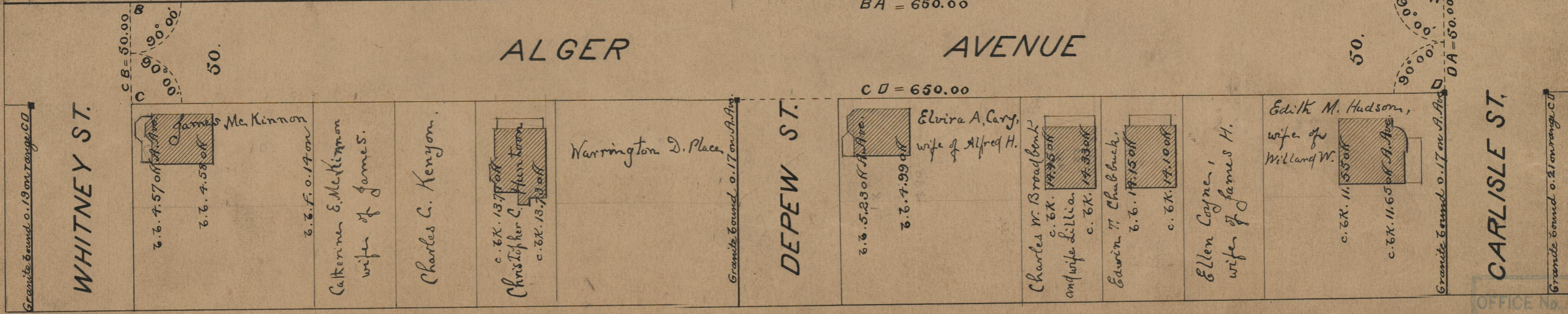
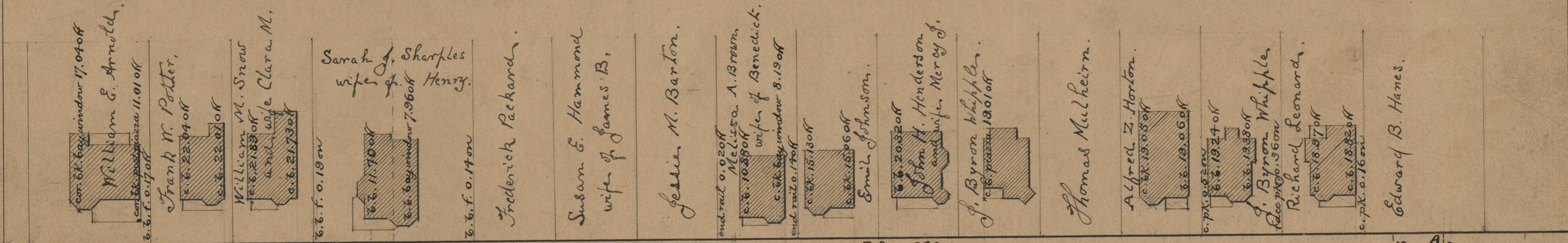
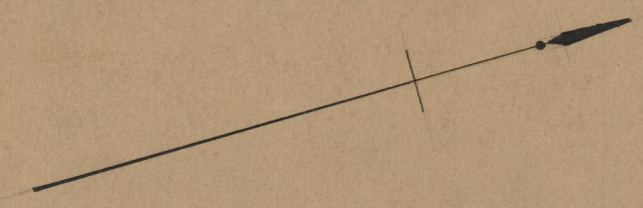
laid out Feb 15, 1900

# PLAT OF ALGER AVENUE

FROM CARLISLE ST. TO WHITNEY ST.

SCALE 50 FEET PER INCH

650.00



BA = 650.00

CD = 650.00

## ALGER AVENUE

WHITNEY ST.

DEPEW ST.

CARLISLE ST.

75  
A-41

OFFICE No. 14037  
DRAWER 75  
SHEET A-41