

PROVIDENCE, R.I.
CITY ENGINEER'S OFFICE
STREET LINE DEPT.

Oct. 21, 1899.

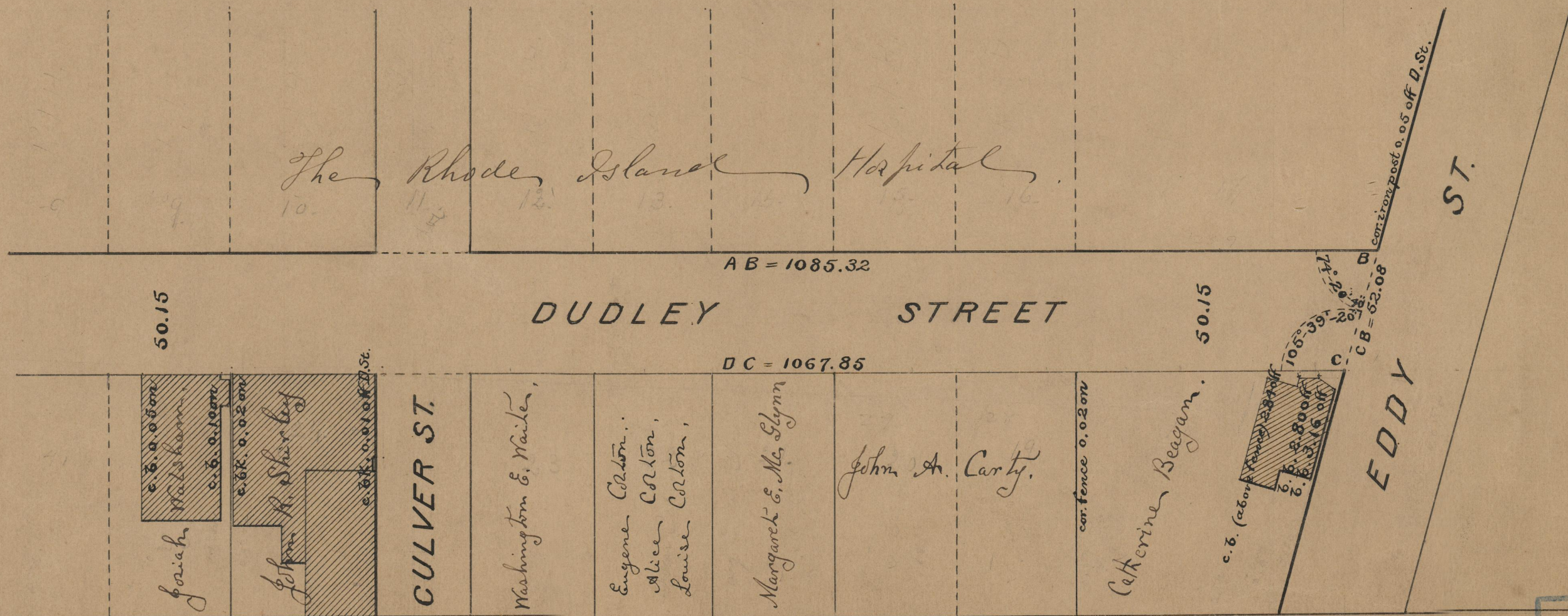
028733

laid out Jan 18, 1900

PLAT OF DUDLEY STREET

FROM PLAIN ST. TO EDDY ST.
IN TWO SHEETS

SCALE 50 FEET PER INCH.



OFFICE No. 14004
 DRAWER " 75
 SHEET " A-33