

C.M.W. E23-86

PROVIDENCE, R.I.  
CITY ENGINEER'S OFFICE  
STREET LINE DEPT.  
May 20, 1899

0284177

Note, The area declared a public highway is indicated by the letters A, B, C and D  
The lines agree with Union Plat No 1, recorded on Card 582 in the office of the Recorder of Deeds.

# PLAT OF ELLERY STREET

FROM WENDELL ST. TO UNION AVE.

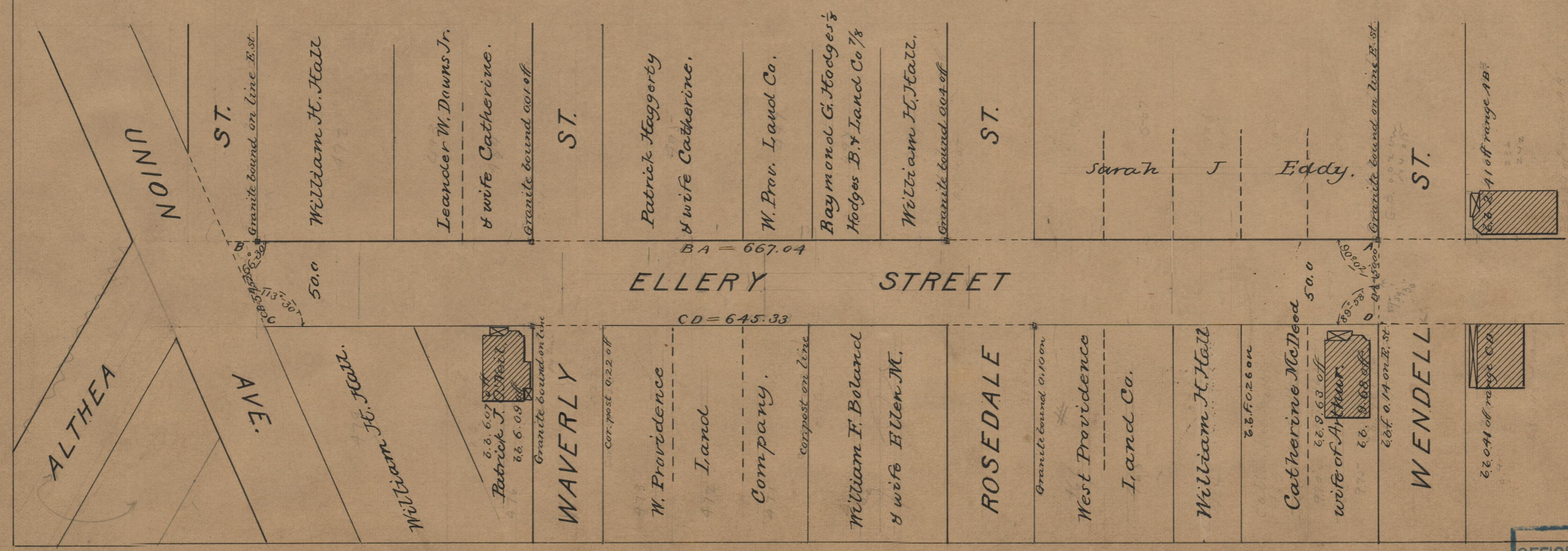
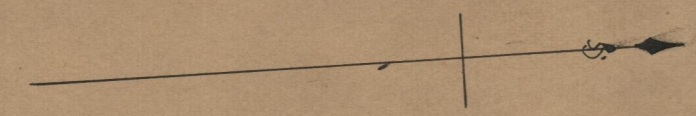
SCALE 60 FEET PER INCH.

ESTABLISHED AS A PUBLIC HIGHWAY  
ON PETITION OF THE ABUTTING OWNERS BY THE  
BOARD OF ALDERMEN

April 13, 1899

C.M.W. 1007  
86

667.04  
645.33  
2)1312.37  
656.185



OFFICE No.	13957
DRAWER	75
SHEET	A-35