

C.M.W. 223-78.

PROVIDENCE, R.I.  
CITY ENGINEER'S OFFICE  
STREET LINE DEPT.

May 17, 1899.

0.28397

Note, The area declared  
a public highway is indicated  
by the letters A, B, C and D.

# PLAT OF LAND

EXTENDING FROM WASHINGTON ST. TO RAILROAD TERRACE.

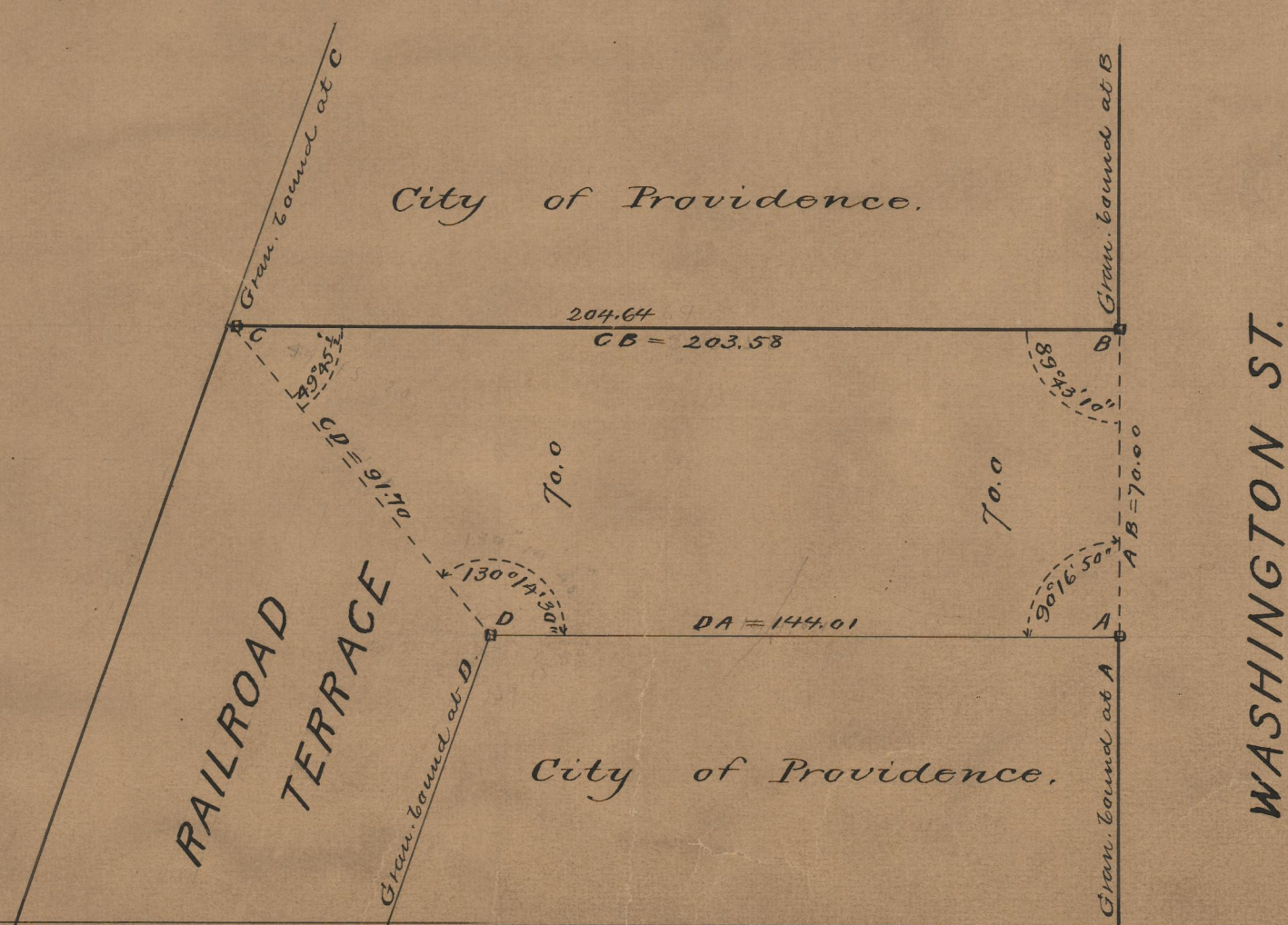
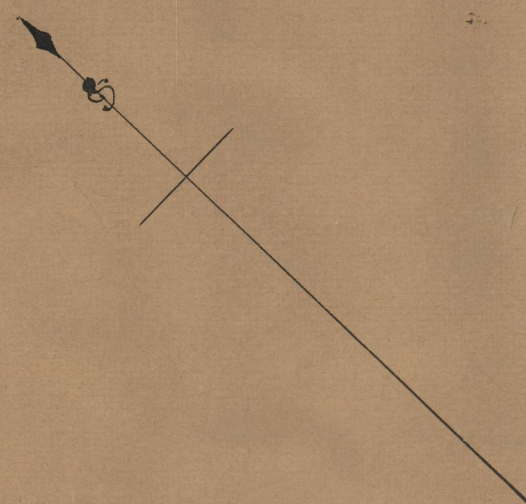
SCALE 40 FEET PER INCH.

DEDICATED FOR HIGHWAY PURPOSES AND  
DECLARED A PUBLIC HIGHWAY BY THE  
CITY COUNCIL,  
April 25, 1899.

203.58  
144.01  
2347.59  
173.79

Named Exchange Terrace Feb. 5, 1920  
with "Railroad Terrace" and land in extension  
to West Exchange St.

J.P.B. 27/46



75  
A34

75  
A-25  
A34

OFFICE No. 13953  
DRAWER 75

A-34