

PROVIDENCE, R.I.
CITY ENGINEER'S OFFICE

STREET LINE DEPT

Dec. 1, 1898

02790606

Note, The area of land dedicated for highway purposes is indicated by the letters A, B, C, D, E, F, G, Hand I.

PLAT OF WEST EXCHANGE STREET

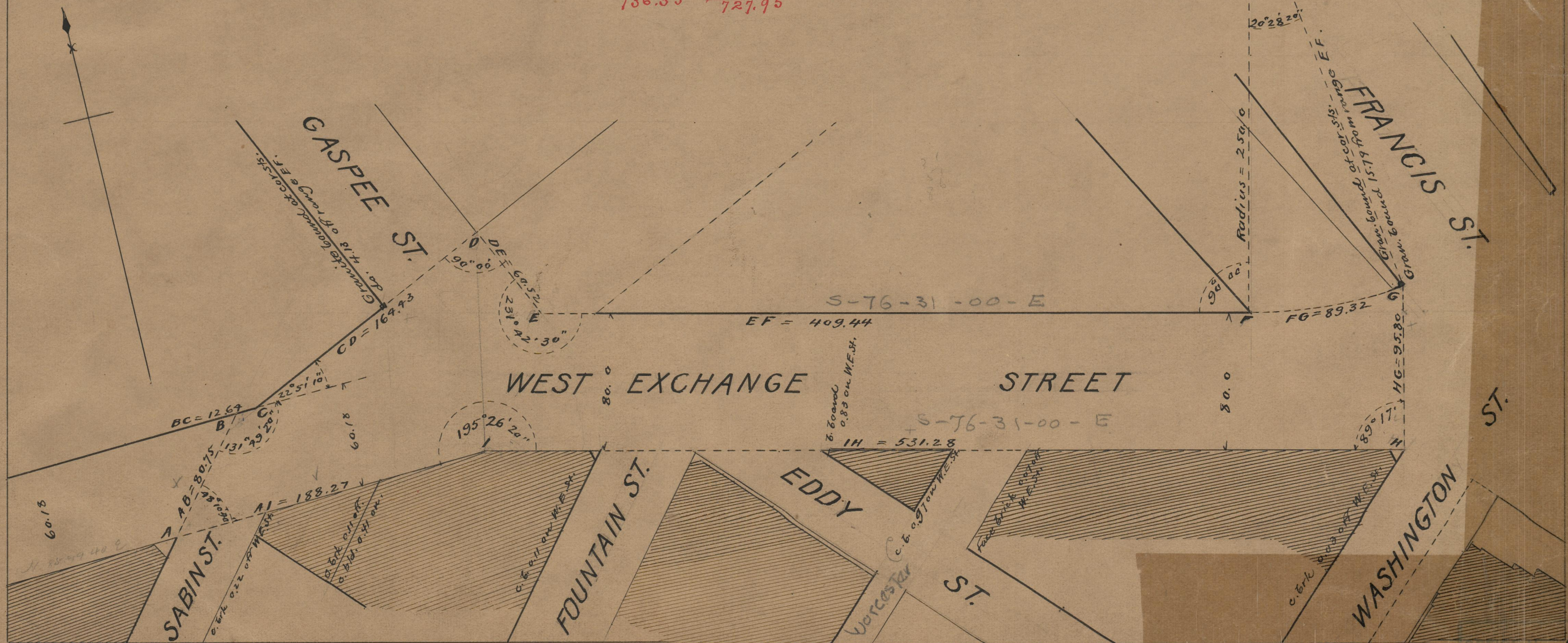
FROM SABIN ST. TO WASHINGTON ST
DEDICATED FOR HIGHWAY PURPOSES
BY THE CITY COUNCIL

September 20, 1898

SCALE 60 FEET PER INCH.

*Changed to Dorrance St. from
Washington St. to Gaspee St. Oct. 5, 1899.*

12.64	188.27
164.43	531.28
60.52	719.55
409.44	736.35
89.32	21455.90
736.35	727.95



75
A27

OFFICE NO 13902
DRAWN 75
SCALE A-27