

See Res. City Council Aug. 5, 1898.

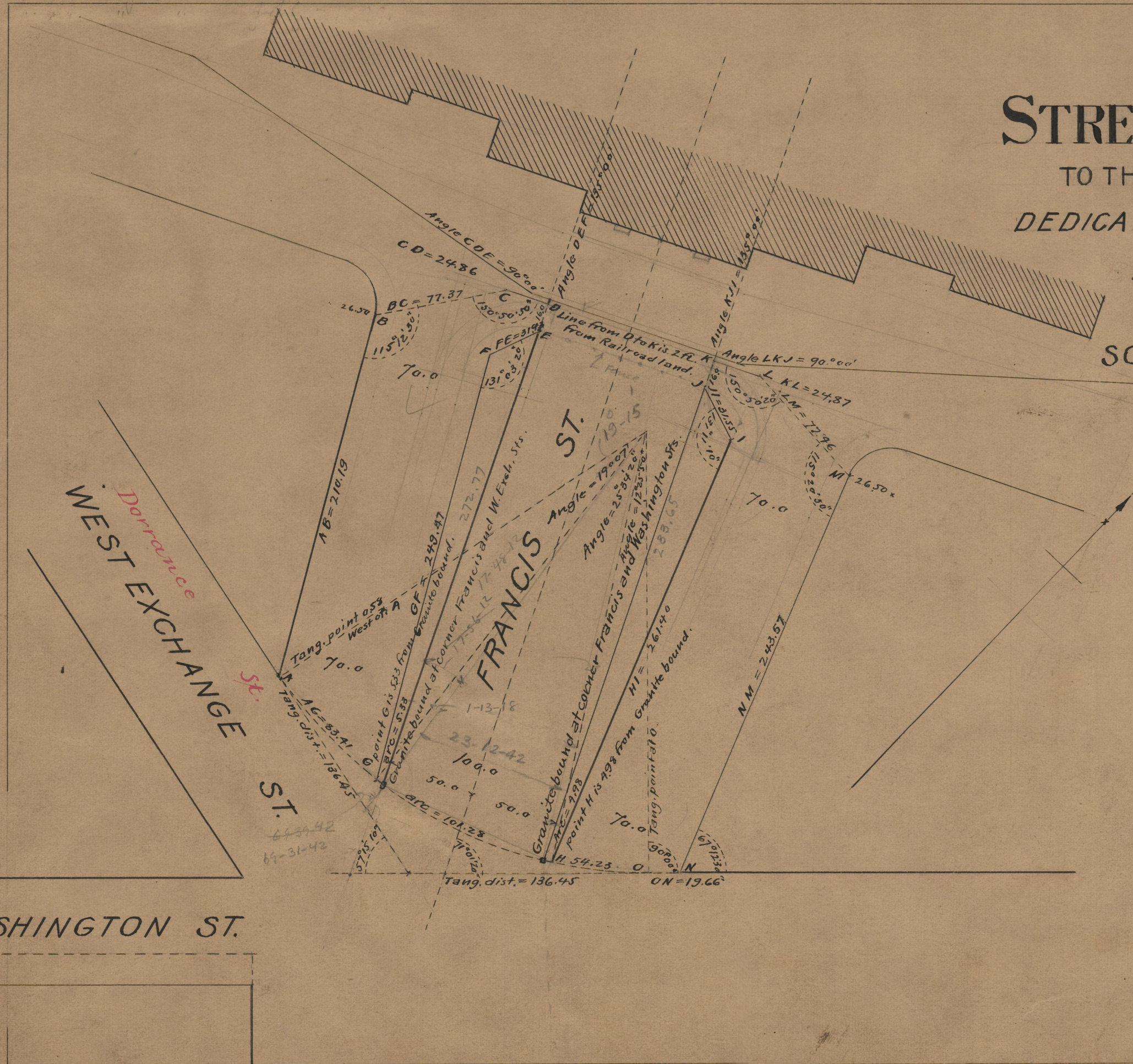
(Taken from General Plan)

027904

PLAT OF
STREETS OR APPROACHES
 TO THE NEW PASSENGER STATION
 DEDICATED FOR HIGHWAY PURPOSES
 BY THE CITY COUNCIL
 Aug. 5, 1898.

SCALE 60 FEET PER INCH.

249.47	261.40
31.43	31.55
210.19	243.57
2491.09	2536.52
245.55	268.26



Note, The areas of land dedicated for highway purposes are indicated by the letters A B C D E F G and the letters H I J K L M N O.