

PROVIDENCE, R.I.
CITY ENGINEER'S OFFICE
STREET LINE DEPT.
Dec. 1, 1898
027902

Note, The area dedicated is indicated by the letters NOPQRSTU.

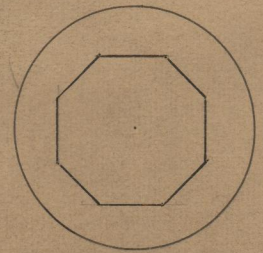
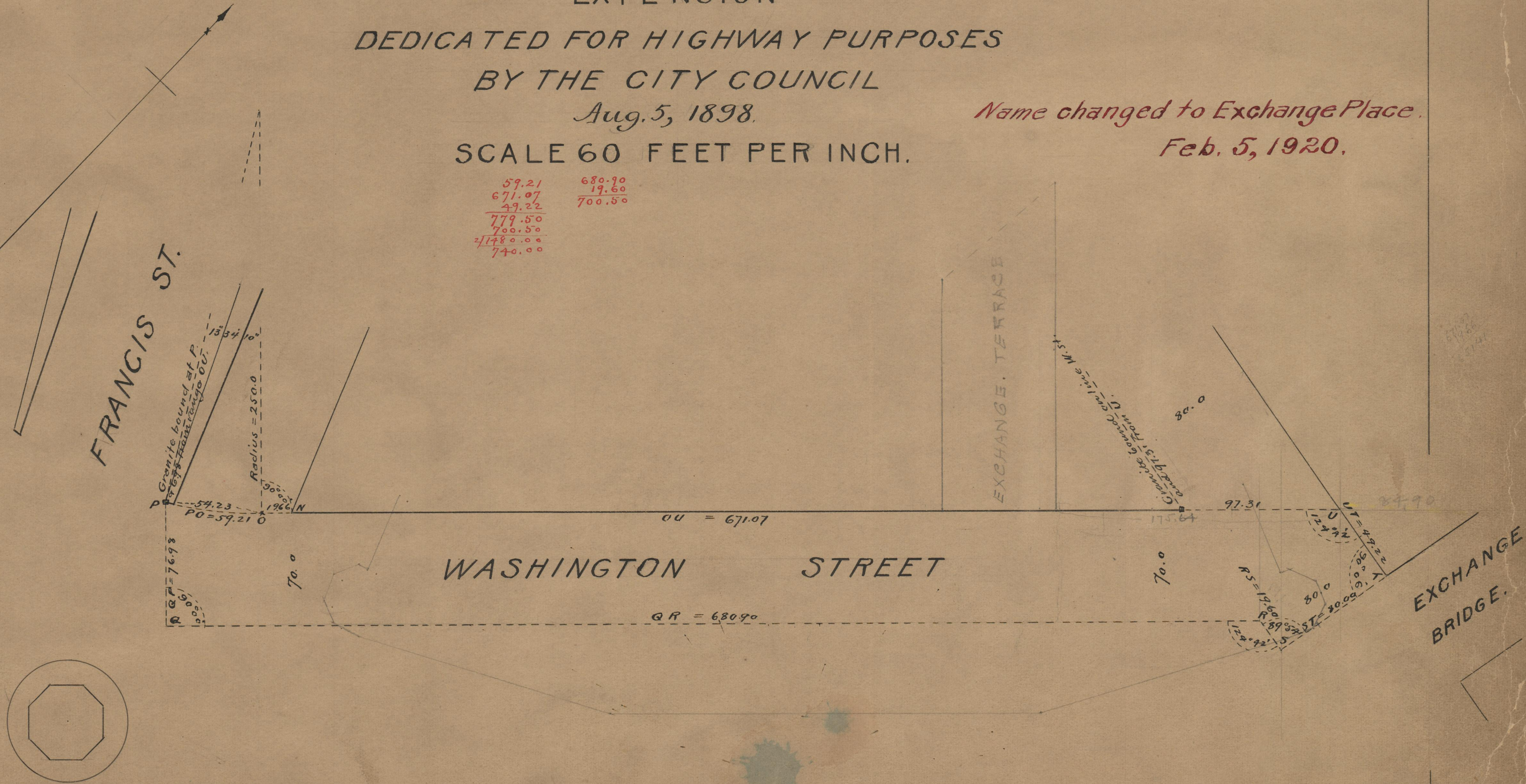
PLAT OF WASHINGTON STREET EXTENSION

DEDICATED FOR HIGHWAY PURPOSES
BY THE CITY COUNCIL
Aug. 5, 1898.

*Name changed to Exchange Place.
Feb. 5, 1920.*

SCALE 60 FEET PER INCH.

59.21	680.90
671.07	19.60
49.22	700.50
779.50	
700.50	
740.00	



OFFICE No.	13900
DRAWN	75
SHEET	A-25