

PROVIDENCE, R.I.
CITY ENGINEER'S OFFICE
STREET LINE DEPT.

Aug. 20 1897

026788

Note The lines of Humboldt avenue defined hereon agree with the deeds conveying the same, which are recorded in the office of the recorder of deeds in deed book 365 pages 270 and 79 in deed book 383 page 219 and deed book 387 page 458.

PLAT OF HUMBOLDT AVENUE

FROM IRVING AVE.

TO THE SOUTH LINE OF ELTON ST.

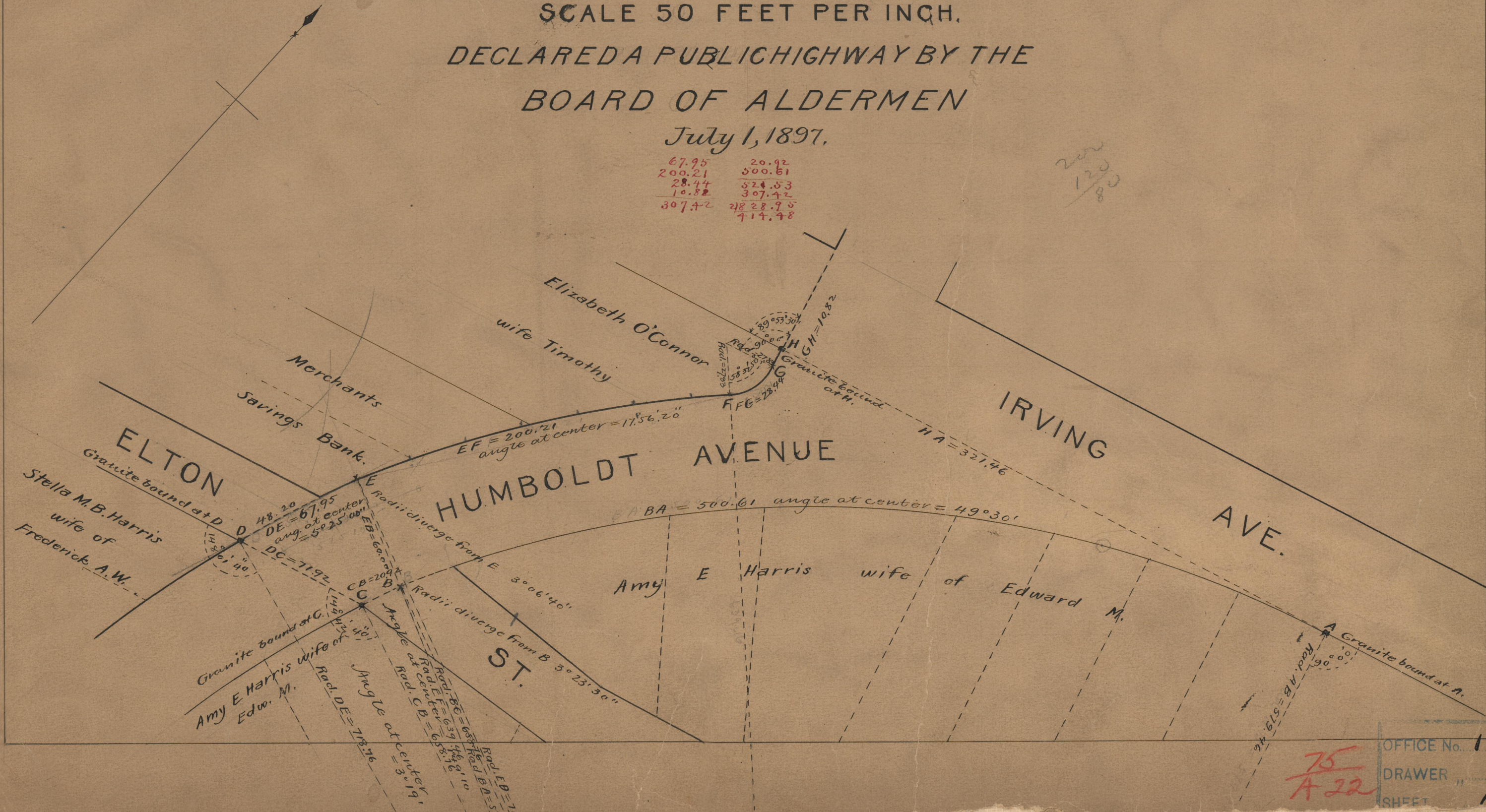
SCALE 50 FEET PER INCH.

DECLARED A PUBLIC HIGHWAY BY THE
BOARD OF ALDERMEN

July 1, 1897.

67.95	20.92
200.21	500.61
28.44	324.53
10.82	307.42
307.42	2828.95
	717.98

200
120
80



OFFICE No. 13600
DRAWER 75
SHEET A-2

75
A 22