

PROVIDENCE, R.I.
CITY ENGINEER'S OFFICE
STREET LINE DEPT.
Dec. 15, 1897

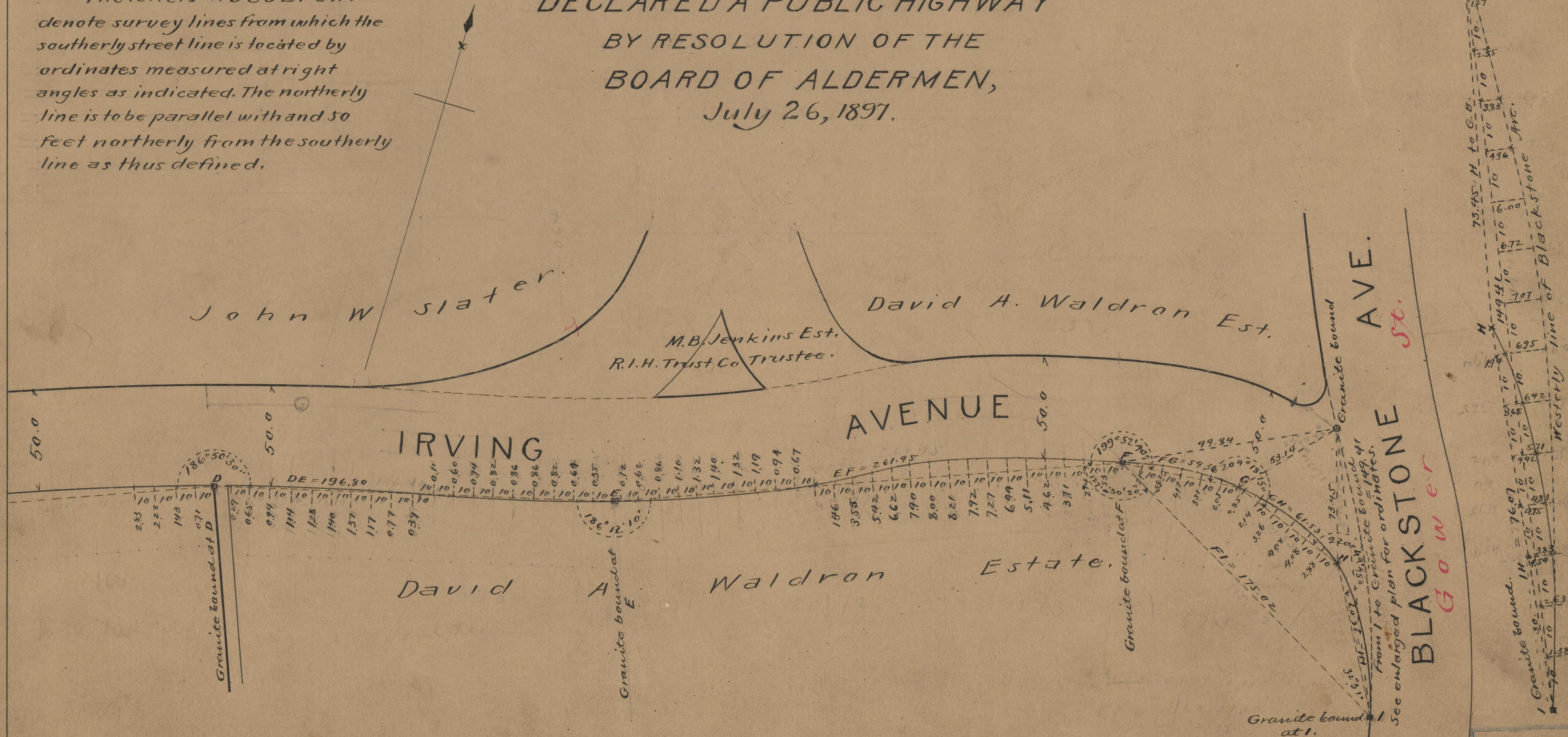
027028

PLAT OF
IRVING AVENUE
FROM WESTERLY LINE OF GROTTO AVE.
TO WESTERLY LINE OF BLACKSTONE AVE.
IN TWO SHEETS
SCALE 50 FEET PER INCH.
DECLARED A PUBLIC HIGHWAY
BY RESOLUTION OF THE
BOARD OF ALDERMEN,
July 26, 1897.

Note. The lines of Irving avenue shown hereon correspond with the deeds conveying the same to the city, (see Deed Book 407 pages 105-6-7 and Deed Book 410

pages 165-6-7 in the office of the recorder of deeds) The slight change in distances and angles is made to harmonize variations.

The letters ABCDEFGHI denote survey lines from which the southerly street line is located by ordinates measured at right angles as indicated. The northerly line is to be parallel with and 50 feet northerly from the southerly line as thus defined.



OFFICE No. 13594
DRAWER 75
SHEET A-21