

PROVIDENCE, R.I.
CITY ENGINEER'S OFFICE
STREET LINE DEPT.
Dec. 15, 1897

027027

PLAT OF IRVING AVENUE

FROM WESTERLY LINE OF GROTTO AVE.
TO WESTERLY LINE OF BLACKSTONE AVE.

IN TWO SHEETS

SCALE 50 FEET PER INCH.

DECLARED A PUBLIC HIGHWAY

BY RESOLUTION OF THE

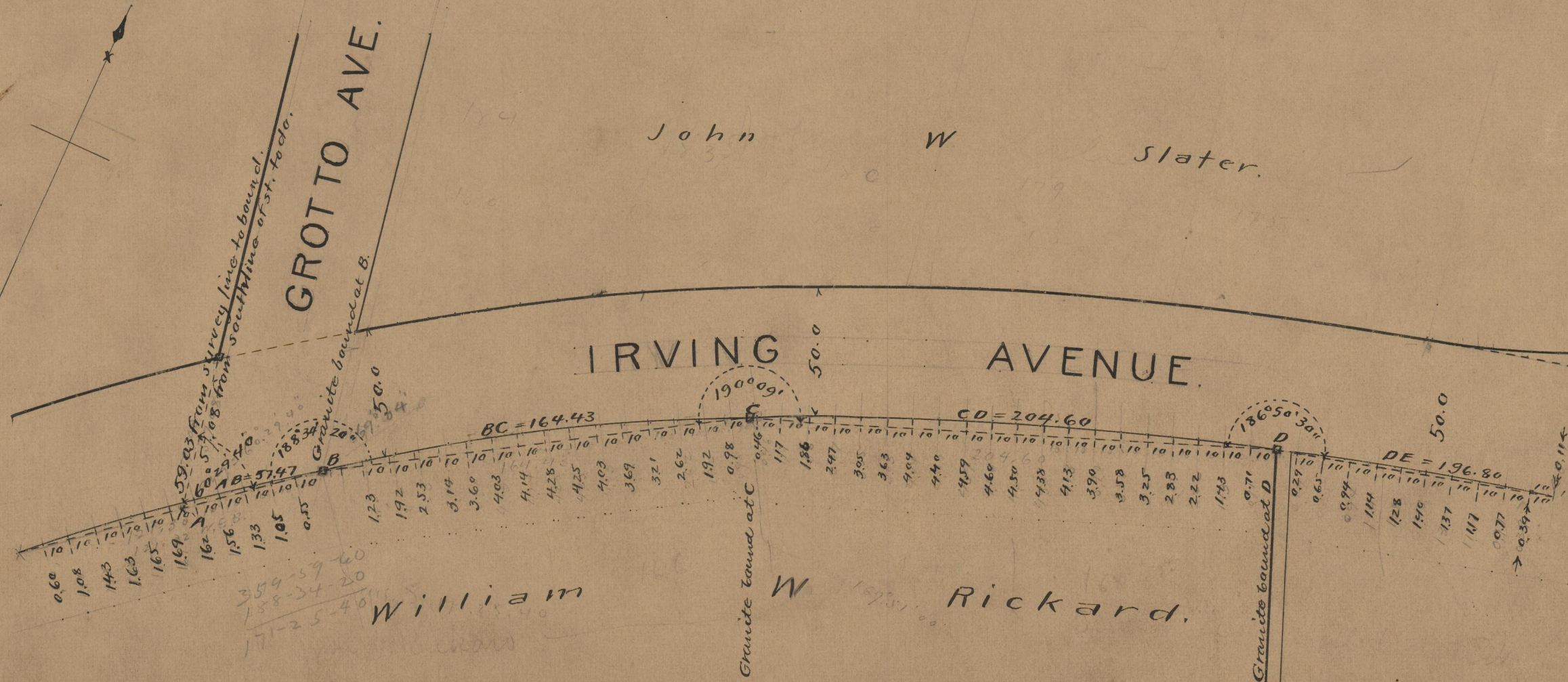
BOARD OF ALDERMEN

July 26, 1897.

AB = 57.47
BC = 164.43
CD = 204.60
DE = 196.80
EF = 261.95
FG = 59.36
GH = 61.53
1006.17 ±

Note, The lines of Irving avenue shown hereon correspond with the deeds conveying the same to the city (see Deed Book 107, pages 105-6-7 and Deed Book 410, pages 165-67 in the office of the recorder of deeds). The slight change in distances and angles is made to harmonize variations.

The letters ABCDEFGHI denote survey lines from which the southerly street line is located by ordinates measured at right angles as indicated. The northerly line is to be parallel with and 50 feet northerly from the southerly line as thus defined.



OFFICE No. 13593
DRAWER " 75
SHEET A-20