

Note The lines of Irving avenue defined hereon agree with the deeds conveying the same which are recorded in the office of the recorder of deeds in deed book 365 pages 79 and 270 and deed book 387 page 458

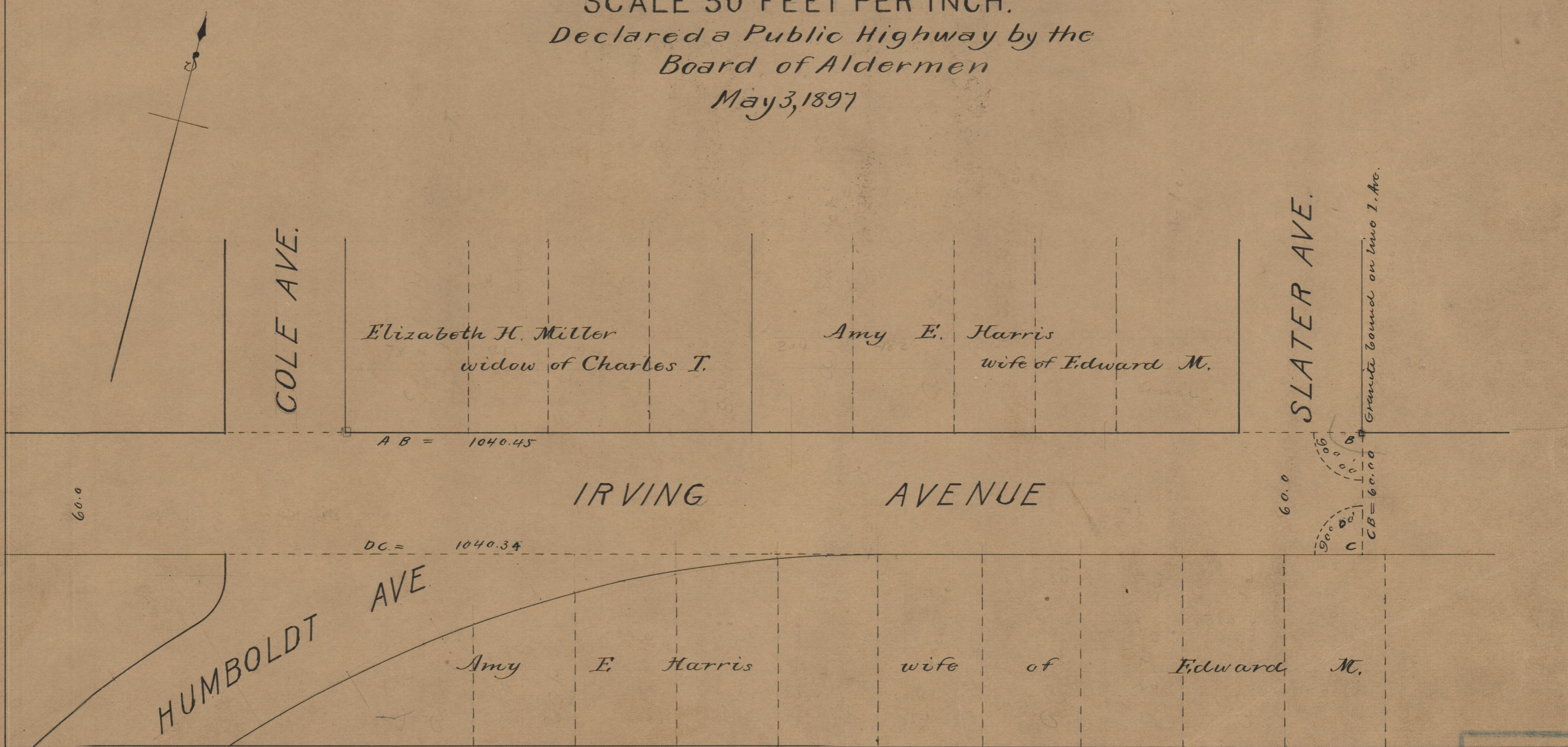
PROVIDENCE, R.I.  
CITY ENGINEER'S OFFICE  
STREET LINE DEPT.  
June 15, 1897  
026 629

# PLAT OF IRVING AVENUE

FROM EASTERLY LINE OF WAYLAND AVE. TO  
EASTERLY LINE OF SLATER AVE.

IN TWO SHEETS

SCALE 50 FEET PER INCH.  
Declared a Public Highway by the  
Board of Aldermen  
May 3, 1897



OFFICE No.	13540
DRAWN	75
SHEET	A-18